

Benchmarks:

"□" Cut Top of Curb North End of Northwest Return at Highland Springs & Hardtner Elev. = 178.72 (City Datum)

"□" Cut Top of Curb West Side of Kentucky Lane ±20' South of End of Existing pavement. Elev. = 182.16 (City Datum)

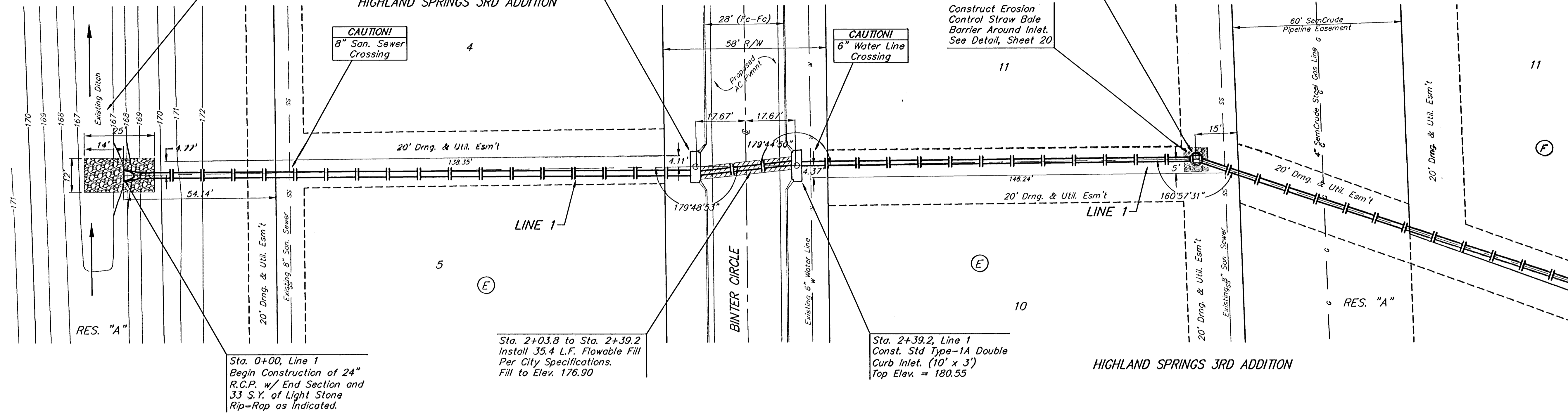
Contractor to regrade existing ditch as necessary to provide positive drainage. Cost of regrading to be incidental to Lump Sum bid item "Site Clearing & Restoration"

Sta. 2+03.8, Line 1
Const. Std Type-1A Double Curb Inlet. (10' x 3')
Top Elev. = 180.55

Sta. 3+81.6, Line 1
Const. Special Yard Inlet.
Top Elev. = 178.50
Match Point

Construct Erosion Control Straw Bale Barrier Around Inlet. See Detail, Sheet 20

SCALE:
1" = 20' HORIZONTAL
1" = 5' VERTICAL
• = IRON

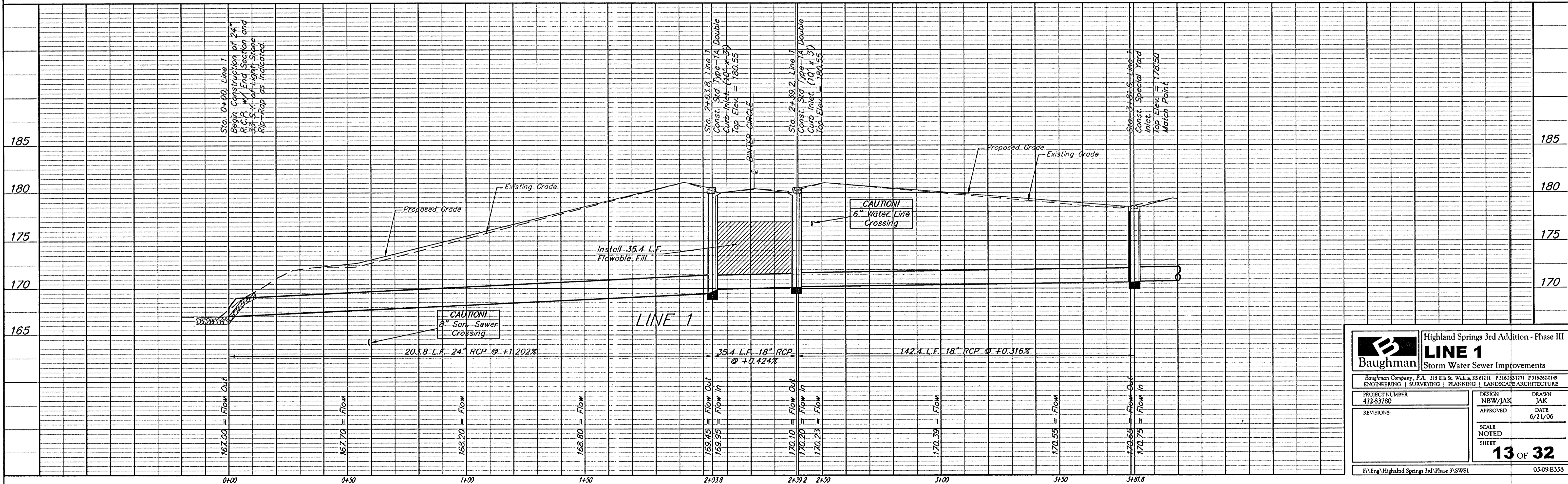


Sta. 0+00, Line 1
Begin Construction of 24" R.C.P. w/ End Section and 33 S.Y. of Light Stone Rip-Rap as Indicated.

Sta. 2+03.8 to Sta. 2+39.2
Install 35.4 L.F. Flowable Fill Per City Specifications. Fill to Elev. 176.90

Sta. 2+39.2, Line 1
Const. Std Type-1A Double Curb Inlet. (10' x 3')
Top Elev. = 180.55

HIGHLAND SPRINGS 3RD ADDITION



		Highland Springs 3rd Addition - Phase III LINE 1 Storm Water Sewer Improvements	
Baughman Company, P.A. 315 Ella St. Wichita, KS 67211 P 316.262.7271 F 316.262.0149 ENGINEERING SURVEYING PLANNING LANDSCAPE ARCHITECTURE			
PROJECT NUMBER 472-83780	DESIGN NBW/JAK	DRAWN JAK	DATE 6/21/06
REVISIONS:	SCALE NOTED SHEET 13 OF 32		
FA/Eng/Highland Springs 3rd Phase 3/SWS1		05-09-E358	