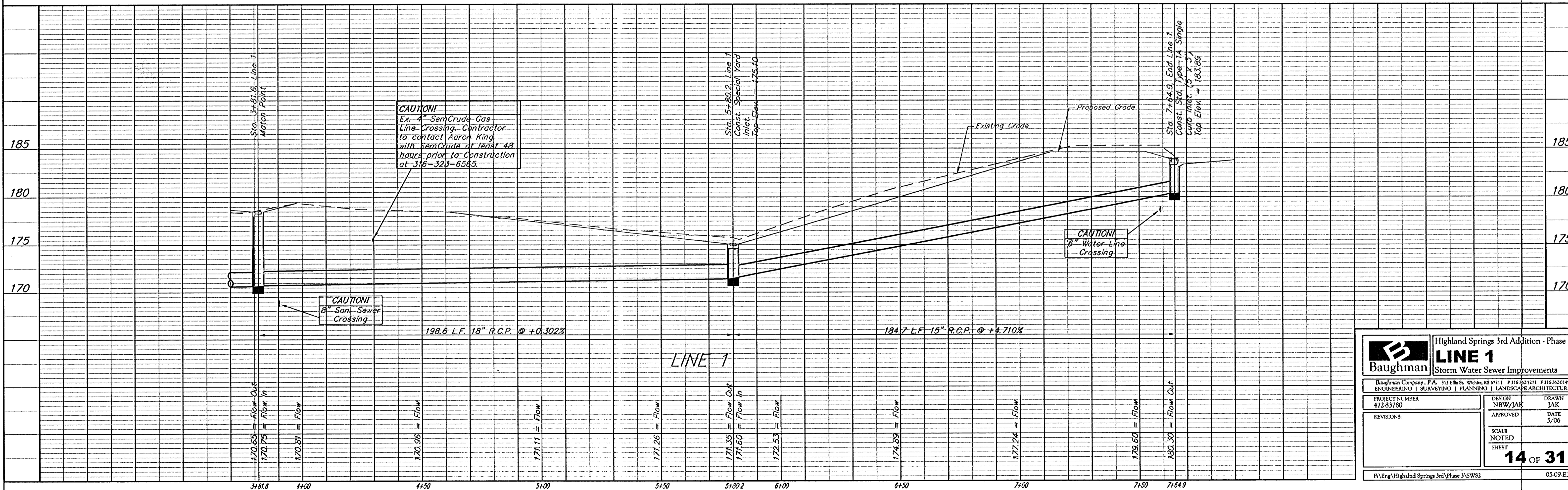
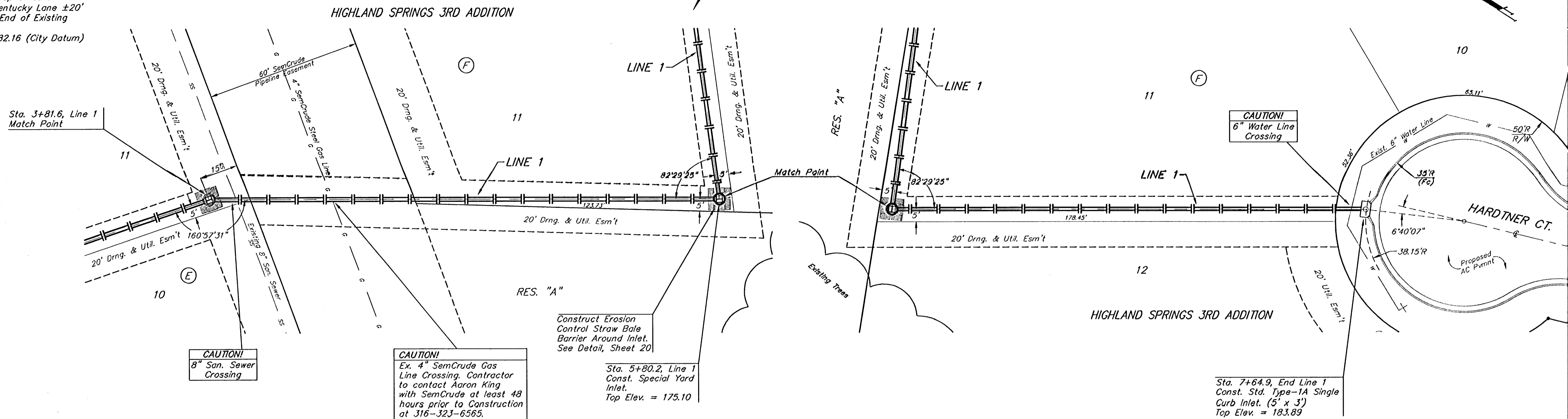


Benchmarks:

"□" Cut Top of Curb North End of Northwest Return at Highland Springs & Hardtner Elev. = 178.72 (City Datum)

"□" Cut Top of Curb West Side of Kentucky Lane ±20' South of End of Existing pavement. Elev. = 182.16 (City Datum)

SCALE:
1" = 20' HORIZONTAL
1" = 5' VERTICAL
• = IRON



		Highland Springs 3rd Addition - Phase III	
		LINE 1	
Storm Water Sewer Improvements		Baughman Company, P.A. 115 E. 11th St., Wichita, KS 67211 P 316-263-7271 F 316-262-0149 ENGINEERING SURVEYING PLANNING LANDSCAPE ARCHITECTURE	
PROJECT NUMBER 47283780	DESIGN NBW/JAK	DRAWN JAK	
REVISIONS:	APPROVED	DATE 5/06	
SCALE NOTED		SHEET	
		14 OF 31	
P:\Eng\Highland Springs 3rd Phase 3\SWS2		05-09-B358	