

**Benchmarks:**

"□" Cut Top of Curb North End of Northwest Return at Highland Springs & Hardtner Elev. = 178.72 (City Datum)

"□" Cut Top of Curb West Side of Kentucky Lane ±20' South of End of Existing pavement. Elev. = 182.16 (City Datum)

**HIGHLAND SPRINGS 3RD ADDITION**

Sta. 3+12.3, Line 2 = Sta. 0+00, Begin Line 2A  
Const. Std. Double Drop Inlet (2'x4')  
Top Elev. = 177.50  
Match Point

Construct Erosion Control Straw Bale Barrier Around Inlet. See Detail, Sheet 20

SCALE:  
1" = 20' HORIZONTAL  
1" = 5' VERTICAL  
• = IRON

HIGHLAND SPRINGS 2ND ADDITION

Sta. 0+00, Begin Line 2  
Connect to Existing 24" Stub and Extend 24" RCP N.W. Contractor to Verify Depth and Location of Existing Stub Prior to Construction.

Sta. 1+26.1 to Sta. 1+66.1  
Install 40.0 L.F. Flowable Fill Per City Specifications. Fill to Elev. 177.00

CAUTION!  
8" Water Line Crossing

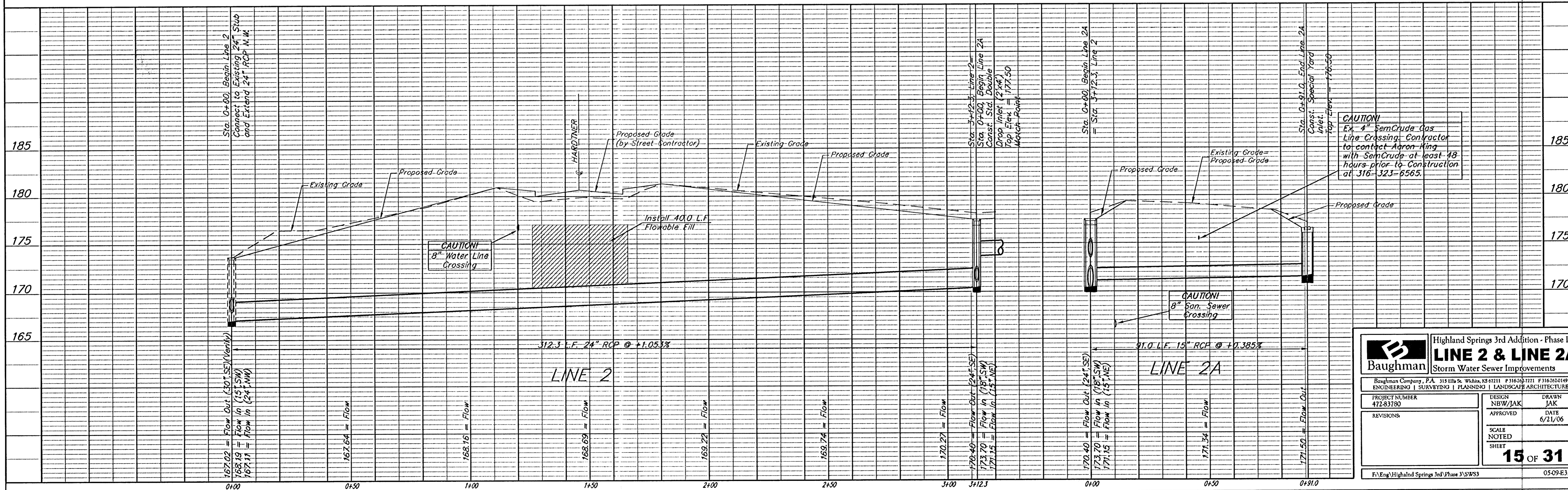
CAUTION!  
8" San. Sewer Crossing

CAUTION!  
Ex. 4" SemCrude Gas Line Crossing. Contractor to contact Aaron King with SemCrude at least 48 hours prior to construction at 316-323-6565.

Construct Erosion Control Straw Bale Barrier Around Inlet. See Detail, Sheet 20

Sta. 0+91.0, End Line 2A  
Const. Special Yard Inlet.  
Top Elev. = 176.50

**HIGHLAND SPRINGS 3RD ADDITION**



<b>Baughman</b>		Highland Springs 3rd Addition - Phase III	
<b>LINE 2 &amp; LINE 2A</b>		Storm Water Sewer Improvements	
Baughman Company, P.A. 315 E. 11th St. Wichita, KS 67211 P 316-262-7171 F 316-262-4149			
ENGINEERING   SURVEYING   PLANNING   LANDSCAPE ARCHITECTURE			
PROJECT NUMBER 472-83780	DESIGN NBW/JAK	DRAWN JAK	
REVISIONS	APPROVED	DATE 6/21/06	
SCALE NOTED		SHEET <b>15 OF 31</b>	
F:\Eng\Highland Springs 3rd\Phase 3\SWSS		05-09-E358	