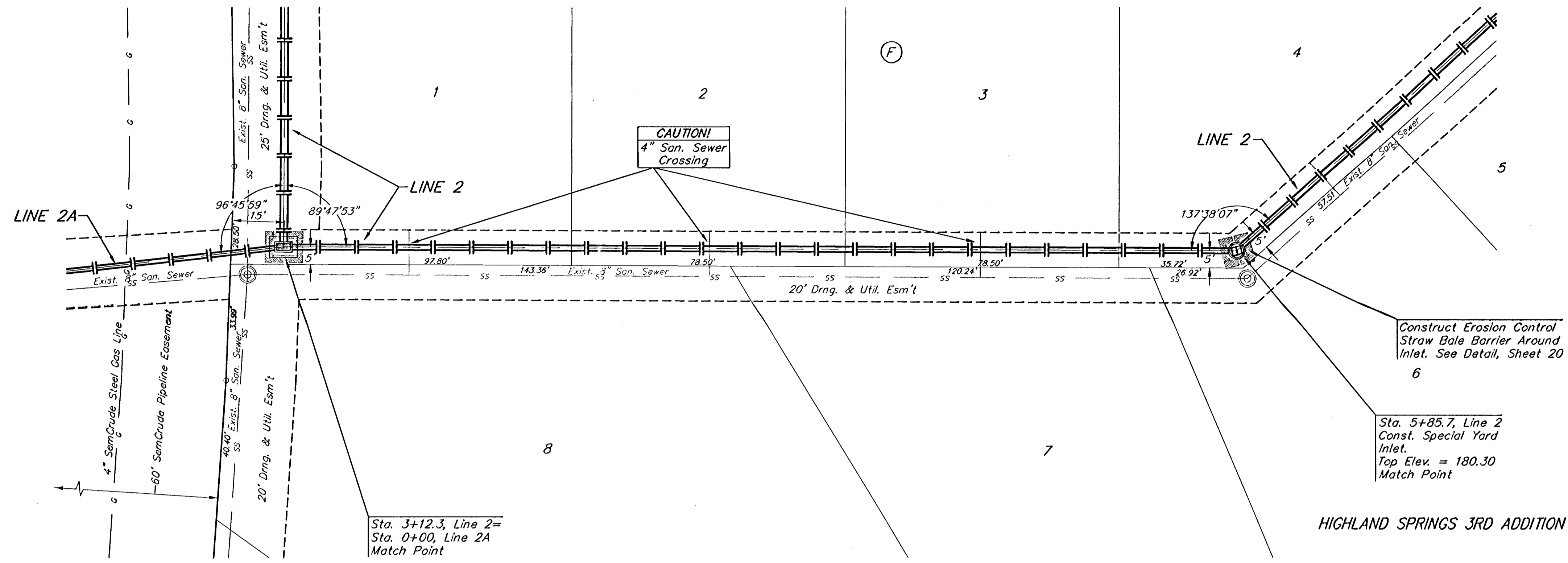


Benchmarks:

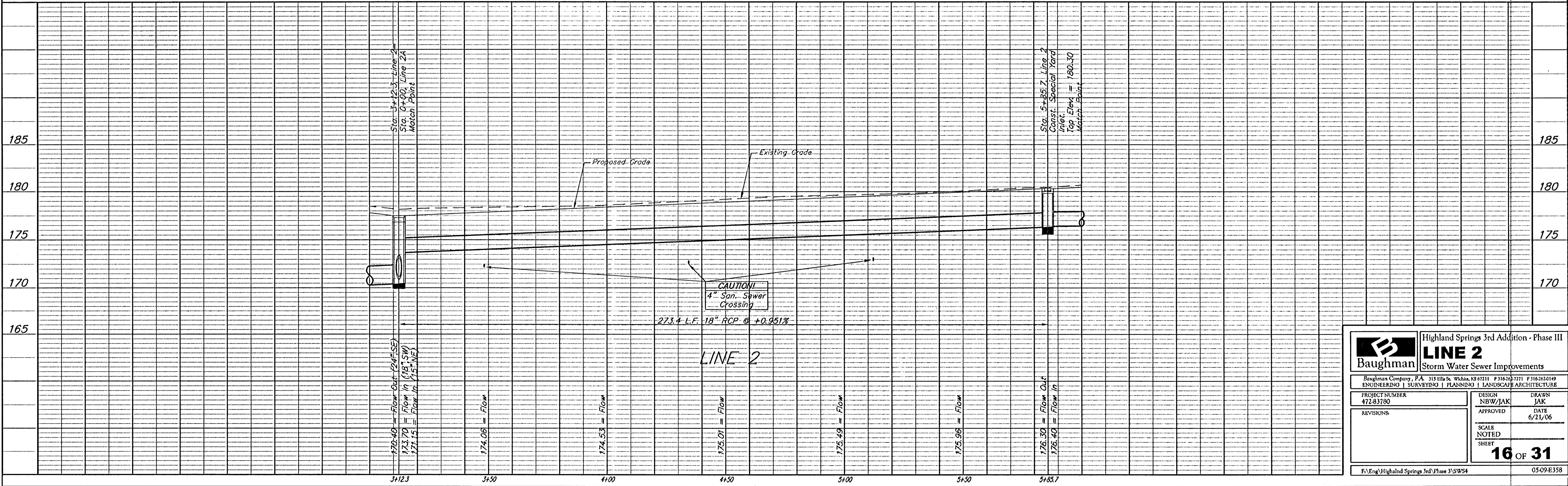
"□" Cut Top of Curb North End of Northwest Return at Highland Springs & Hardtner Elev. = 178.72 (City Datum)

"□" Cut Top of Curb West Side of Kentucky Lane ±20' South of End of Existing pavement. Elev. = 182.16 (City Datum)

HIGHLAND SPRINGS 3RD ADDITION



SCALE:
1" = 20' HORIZONTAL
1" = 5' VERTICAL
• = IRON



Baughman		Highland Springs 3rd Addition - Phase III	
		LINE 2	
		Storm Water Sewer Improvements	
Baughman Company, P.A. 315 Ellis St. Wichita, KS 67211 P 316-262-7211 F 316-262-0149 ENGINEERING SURVEYING PLANNING LANDSCAPE ARCHITECTURE			
PROJECT NUMBER 472-83780	DESIGN NBW/JAK	DRAWN JAK	DATE 6/21/06
REVISIONS:	APPROVED	SCALE NOTED	SHEET
			16 OF 31
F:\Eng\Highland Springs 3rd\Phase 3\SW34			05-09-E358