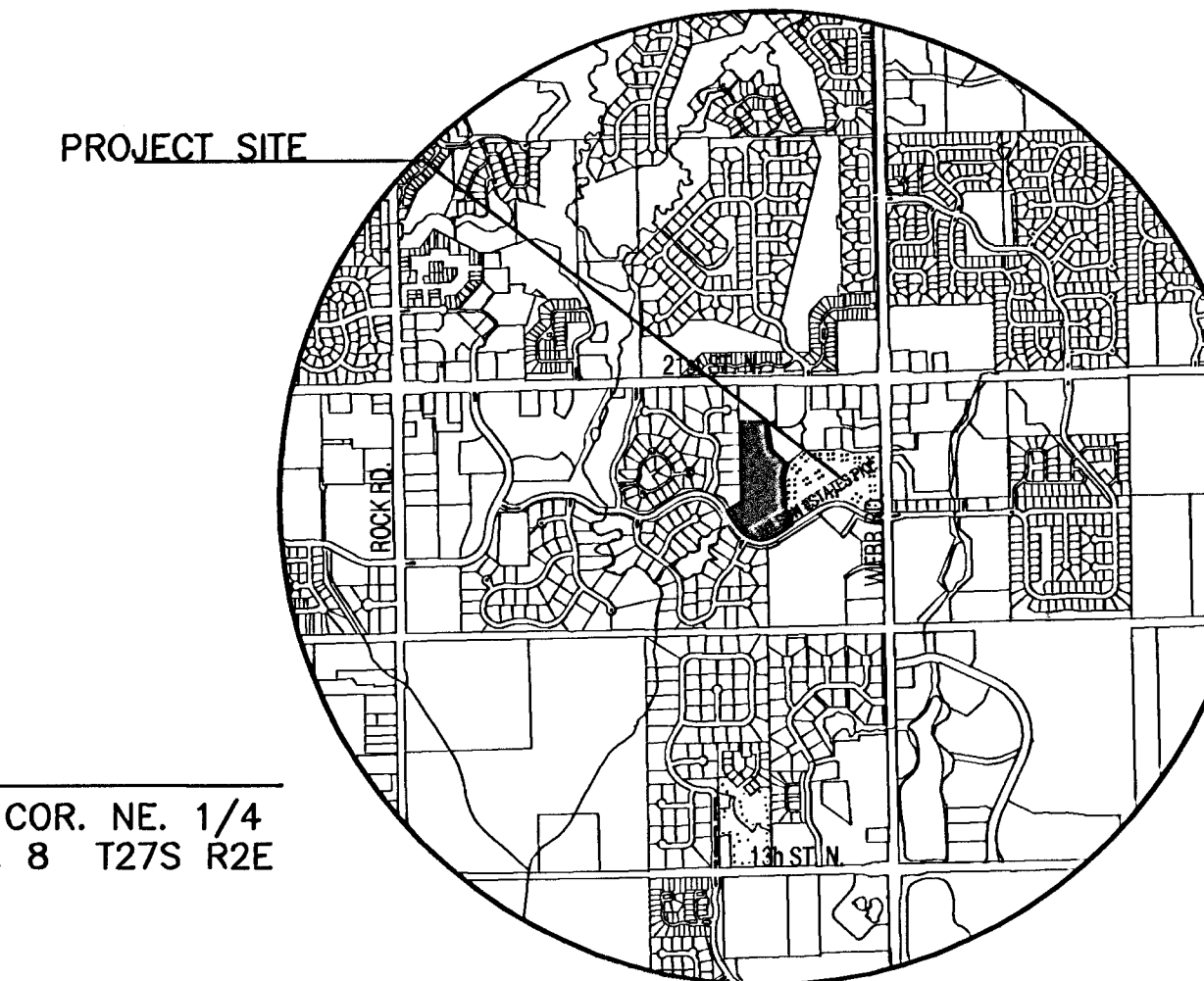


# PAVING STREETS - PHASE 2 BRIGHTON COURTS ADDITION

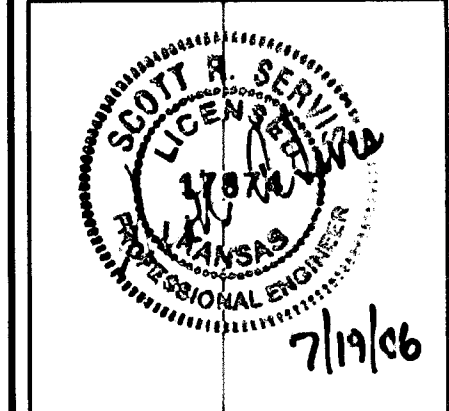
## PROJECT NO. 472-83817

CITY OF WICHITA, KANSAS  
JIM ARMOUR, P.E., CITY ENGINEER  
OCA NO. 765997



LOCATION MAP

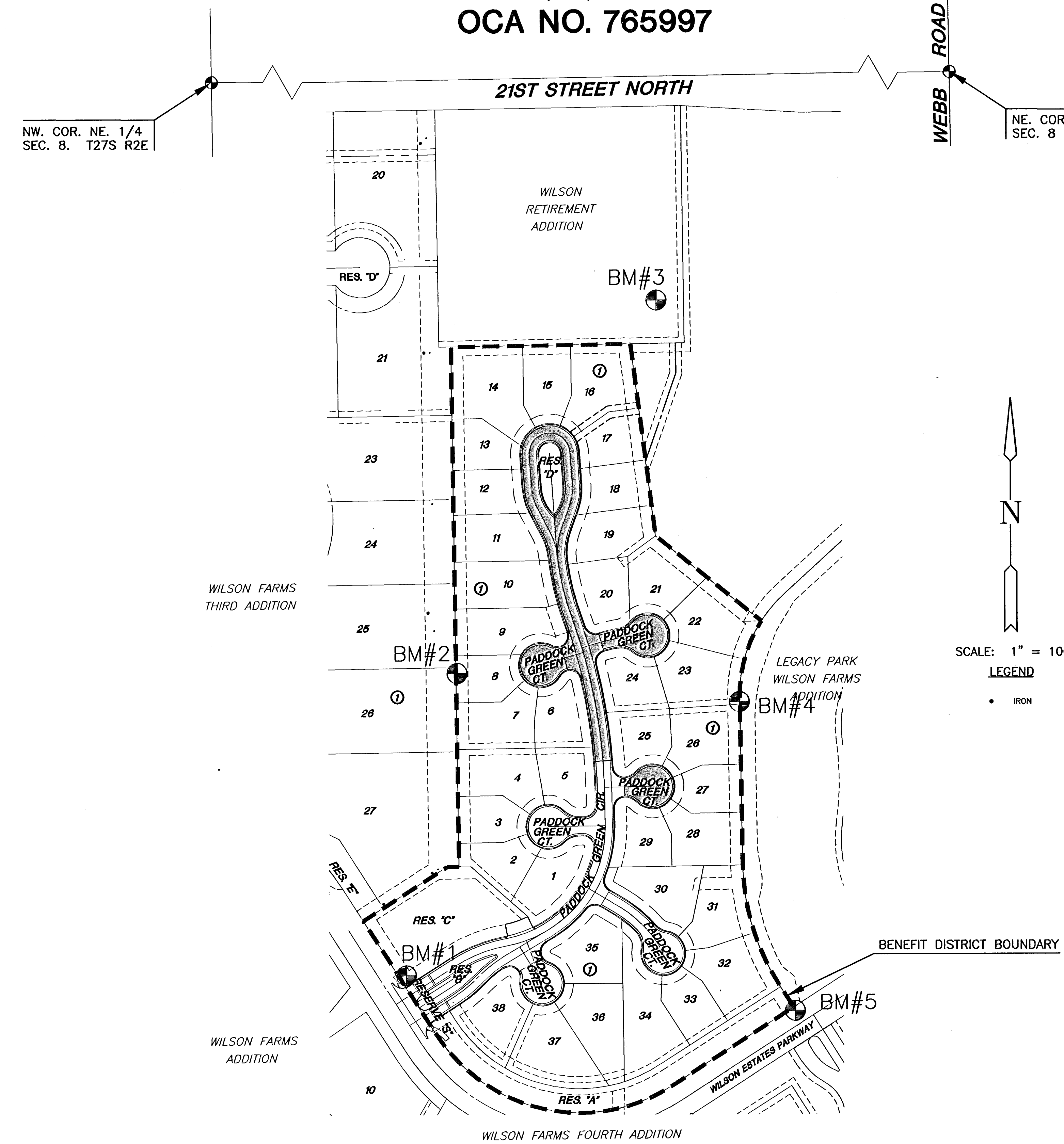
**MKEC**  
ENGINEERING  
CONSULTANTS, INC.  
411 N. WEBB ROAD  
WICHITA, KS. 67206  
316-644-9600



### GENERAL NOTES

1. UNLESS SHOWN OR OTHERWISE STATED ON THESE DRAWINGS, MATERIALS AND CONSTRUCTION SHALL BE IN ACCORDANCE WITH THE CITY OF WICHITA STANDARD SPECIFICATIONS.
  2. THE TOPS OF INLETS AND MANHOLES AS NOTED ON THE PLANS MAY VARY SO AS TO MEET PROPOSED TOP OF CURB ELEVATIONS OR PAVEMENT ELEVATIONS. THE FIELD ENGINEER SHALL LOCATE INLETS AND MANHOLES WITH REFERENCE TO PROPOSED PAVING PLANS OF THE PERTINENT STREETS.
  3. TRANSITION CURB FROM FULL HEIGHT COMBINATION CURB AND GUTTER TO ROLL TYPE COMBINATION CURB AND GUTTER IS TO BE PAID AS BID FOR LINEAL FEET COMBINED CURB AND GUTTER (3 5/8" ROLL).
  4. ALL CONCRETE SHALL BE STANDARD PAVING MIX UNLESS OTHERWISE NOTED.
  5. THE CONTRACTOR SHALL BE RESPONSIBLE FOR PRESERVING PROPERTY IRONS. THE CONTRACTOR SHALL BE REQUIRED TO RE-ESTABLISH ANY PROPERTY IRONS WHICH ARE DAMAGED OR DESTROYED BY HIS CONSTRUCTION OPERATIONS. SUCH IRONS SHALL BE RE-ESTABLISHED BY A LICENSED LAND SURVEYOR IN ACCORDANCE WITH STATE LAWS.
  6. TREES TO BE REMOVED ARE MARKED . ALL TREES WHICH IN THE OPINION OF THE FIELD ENGINEER CAN BE SAVED, SHALL BE SAVED.
  7. CONTRACTOR SHALL NOTIFY UTILITY COMPANIES OF CONSTRUCTION SCHEDULING.
  8. EXISTING UTILITIES AND THEIR LOCATIONS, AS SHOWN ON THE PLANS REPRESENT THE BEST INFORMATION OBTAINABLE FOR DESIGN. LOCATION INFORMATION HAS BEEN OBTAINED FROM THE VARIOUS COMPANIES AND IS EITHER FROM COMPANY UTILITY DRAWINGS OR COMPANY PROVIDED FIELD LOCATIONS. THE PLAN LOCATIONS SHOWN ARE NOT GUARANTEED. ADDITIONAL EXISTING UTILITIES MAY ALSO BE ENCOUNTERED.
  9. CONTRACTOR WILL BE REQUIRED TO PROVIDE A MINIMUM ADVANCE NOTICE OF SEVENTY-TWO (72) HOURS TO UTILITY COMPANIES TO STARTING ANY EXCAVATION AS FOLLOWS:
    - KANSAS ONE-CALL 800-344-7233
    - OR 687-2470 (LOCAL WICHITA)
- THE CONTRACTOR MUST NOTIFY THE FOLLOWING IN CASE OF EMERGENCY:
- |                               |              |
|-------------------------------|--------------|
| COX COMMUNICATIONS (CABLE)    | 262-0661     |
| WESTAR (ELECTRIC)             | 261-6512     |
| KANSAS GAS SERVICE (GAS)      | 832-3101     |
| SBC (TELEPHONE)               | 800-870-8390 |
| CITY OF WICHITA WATER & SEWER | 262-6000     |
| AQUILA (GAS)                  | 946-0096     |
10. RUBBLE FROM THE REMOVAL OF MISCELLANEOUS STRUCTURES AND EXCESS EXCAVATION WHICH IS TO BE WASTED SHALL BE DISPOSED OF ON SITES TO BE PROVIDED BY THE CONTRACTOR. THESE SITES SHALL BE APPROVED BY THE ENGINEER AS TO SUITABILITY, APPEARANCE AND SITE LOCATION. LOCATIONS THAT, IN THE OPINION OF THE ENGINEER, WILL LEAVE AN UNSIGHTLY APPEARANCE WILL NOT BE APPROVED. ALL DISPOSAL SITES MUST BE APPROVED BY THE KANSAS DEPARTMENT OF HEALTH AND ENVIRONMENT. MATERIAL EITHER STOCKPILED OR DISPOSED OF IN A FLOOD PLAIN WOULD REQUIRE A KANSAS STATE BOARD OF AGRICULTURE PERMIT. ANY MATERIAL DUMPED IN WATERS OF THE UNITED STATES OR WETLANDS IS SUBJECT TO U.S. CORPS OF ENGINEERS PERMITTING REGULATIONS. ANY MATERIAL BURIED OR STOCKPILED BEYOND APPROVED CONSTRUCTION LIMITS WOULD REQUIRE ADDITIONAL ARCHAEOLOGICAL INVESTIGATIONS UNLESS BURIED IN A PREVIOUSLY APPROVED BORROW LOCATION.
  11. ROUGH GRADING FOR THIS PROJECT HAS BEEN COMPLETED WITH THE MASS GRADING TO WITHIN 0.1'. SOME FINAL GRADING MAY BE REQUIRED PRIOR TO CONSTRUCTING THE STREETS. PAVING CONTRACTOR SHALL BE RESPONSIBLE FOR BACKFILLING BEHIND CURBS AND FINE GRADING WITHIN THE RIGHT-OF-WAY.
  12. CONTRACTOR SHALL SEED AND MULCH ALL DISTURBED AREAS WITH RYE GRASS AT A RATE OF 200 LBS. PER ACRE. GROUND SHALL BE PREPARED IN ACCORDANCE WITH CITY OF WICHITA SPECIFICATIONS. SEEDING SHALL BE INCIDENTAL TO OTHER ITEMS BID.

LENGTH OF PROJECT	
29' BK.-BK.	755 FT.
EARTHWORK SUMMARY	
EXCAVATION	755 C.Y.
LOOSE FILL	300 C.Y.
COMPACTED FILL	900 C.Y.



### INDEX TO DRAWINGS

SHEET NO.	DESCRIPTION
1	TITLE SHEET
2	BUBBLE MAP
3-4	TYPICAL SECTIONS
5	VALLEY GUTTER DETAILS
6	SIGNING DETAILS
7-9	PAVING PLANS
10	EROSION PLAN
11-13	BMP DETAILS
14-23	CROSS SECTIONS
24	FINAL PLAT

### BENCHMARKS

- BM#1- "I" CUT ON THE S END OF THE E HEADWALL OF RCB, 101' S & 20' E OF THE SOUTHERNMOST COR. OF LOT 27, BLK 1, WILSON FARMS 3RD ADD. ELEV = 189.38
- BM#2- RR SPIKE IN THE EAST FACE OF A 21" TREE IN THE HEDGEROW NEAR THE MID-POINT OF THE WEST LINE OF BRIGHTON COURTS ADDITION. ELEV = 200.85
- BM#3- "I" CUT ON TOP OF E CURB OF DRIVE INTO ALTERRA RETIREMENT HOME, 72' N & 47' W OF THE SE COR. OF WILSON RETIREMENT ADDITION. ELEV = 204.12
- BM#4- "I" CUT TOP OF RCB END SECTION AT SE COR. OF LOT 23, BLK 1, BRIGHTON COURTS ADDITION. ELEV = 197.07
- BM#5- "I" CUT TOP OF CURB ON THE N SIDE OF WILSON ESTATES PARKWAY AT SE COR. OF BRIGHTON COURTS ADDITION. ELEV = 197.07

**PAVING PLANS - PHASE II**  
**BRIGHTON COURTS ADDITION**  
**WICHITA, KANSAS**

**SHEET TITLE**  
472-83817  
PROJECT NUMBER

DESIGN BY: SRS  
DRAWN BY: DMU  
CHECKED BY: GJA

ISSUED: JULY 2006  
REVISED:

SHEET NO.  
**1 of 24**

PLOTTED: Thursday, July 18, 2008 @ 01:31PM

H:\CIVIL\02280\DWG\PAV\PH2\02280SET.DWG