

BRIGHTON COURTS ADDITION

BRIGHTON COURTS ADDITION

ADJUST EXISTING INLET WITH PAVEMENT UNDER DRAIN. TOP=192.29' PROP.TOP=192.40 CONTRACTOR TO MAINTAIN EXISTING INLET PROTECTION

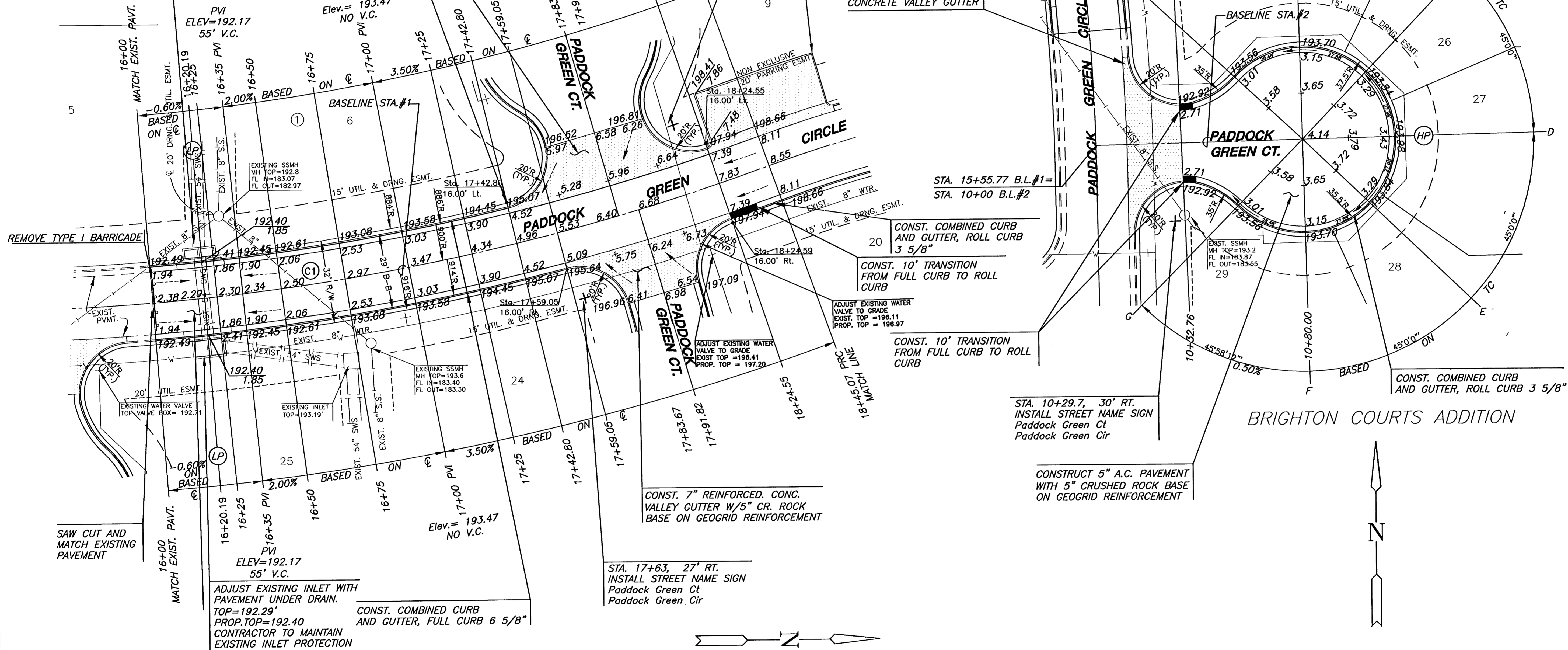
STA. 17+42.80 B.L. #1, 14.5' LT. INSTALL SUBDIVISION BENCHMARK (NO. 8134-08 KANSAS BLUE PRINT)

CONST. 7" REINFORCED. CONC. VALLEY GUTTER W/5" CR. ROCK BASE ON GEOGRID REINFORCEMENT

STA. 18+15, 27' LT. INSTALL STREET NAME SIGN Paddock Green Ct Paddock Green Cir

CONST. 6 5/8" MONO CURB

EXISTING 7" REINFORCED CONCRETE VALLEY GUTTER



REMOVE TYPE I BARRICADE

ADJUST EXISTING INLET WITH PAVEMENT UNDER DRAIN. TOP=192.29' PROP.TOP=192.40 CONTRACTOR TO MAINTAIN EXISTING INLET PROTECTION

CONST. 7" REINFORCED. CONC. VALLEY GUTTER W/5" CR. ROCK BASE ON GEOGRID REINFORCEMENT

STA. 17+63, 27' RT. INSTALL STREET NAME SIGN Paddock Green Ct Paddock Green Cir

ADJUST EXISTING WATER VALVE TO GRADE EXIST. TOP = 196.11 PROP. TOP = 199.97

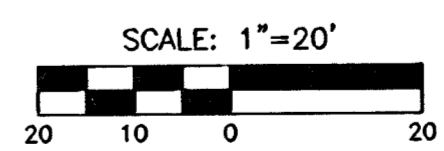
CONST. 10' TRANSITION FROM FULL CURB TO ROLL CURB

CONST. 10' TRANSITION FROM FULL CURB TO ROLL CURB

CONST. COMBINED CURB AND GUTTER, ROLL CURB 3 5/8"

STA. 10+29.7, 30' RT. INSTALL STREET NAME SIGN Paddock Green Ct Paddock Green Cir

CONSTRUCT 5" A.C. PAVEMENT WITH 5" CRUSHED ROCK BASE ON GEOGRID REINFORCEMENT



LEGEND
+ STREET SIGN & SIGN LOCATION (SEE SIGN ASSEMBLY TABLE FOR TYPE & STATION OF SIGN)

NOTE:
TOP OF CURB ELEVATIONS SHOWN ARE FOR FULL CURB. CONSTRUCT CURB & GUTTER AS NOTED.

SUBDIVISION BENCH MARKS

NO.	STREET AND STATION	FROM CL	DESCRIPTION	ELEVATIONS
1	PADDOCK GREEN CIR., 17+42.80	14.5' LT.	TC AT SOUTH EAST END OF SOUTH RETURN, PADDOCK GREEN CT.	

NOTE: CONTRACTOR SHALL INSTALL SUBDIVISION BENCH MARKS ("FLAT SURVEY MARKERS NO. 8134-08 3" TOP DIAMETER PROVIDED BY KANSAS BLUE PRINT CO., INC.) COSTS TO BE CONSIDERED SUBSIDIARY TO CONSTRUCTION OF COMBINED CURB AND GUTTER.

PAVING PLANS - PHASE II
BRIGHTON COURTS ADDITION
WICHITA, KANSAS

PADDOCK GREEN/
PADDOCK GREEN CT.
SHEET TITLE
472-83817
PROJECT NUMBER

SRS
DESIGN BY
DCJ
DRAWN BY
DFL
CHECKED BY

ISSUED
JULY 2006

SHEET NO.
7 of 24