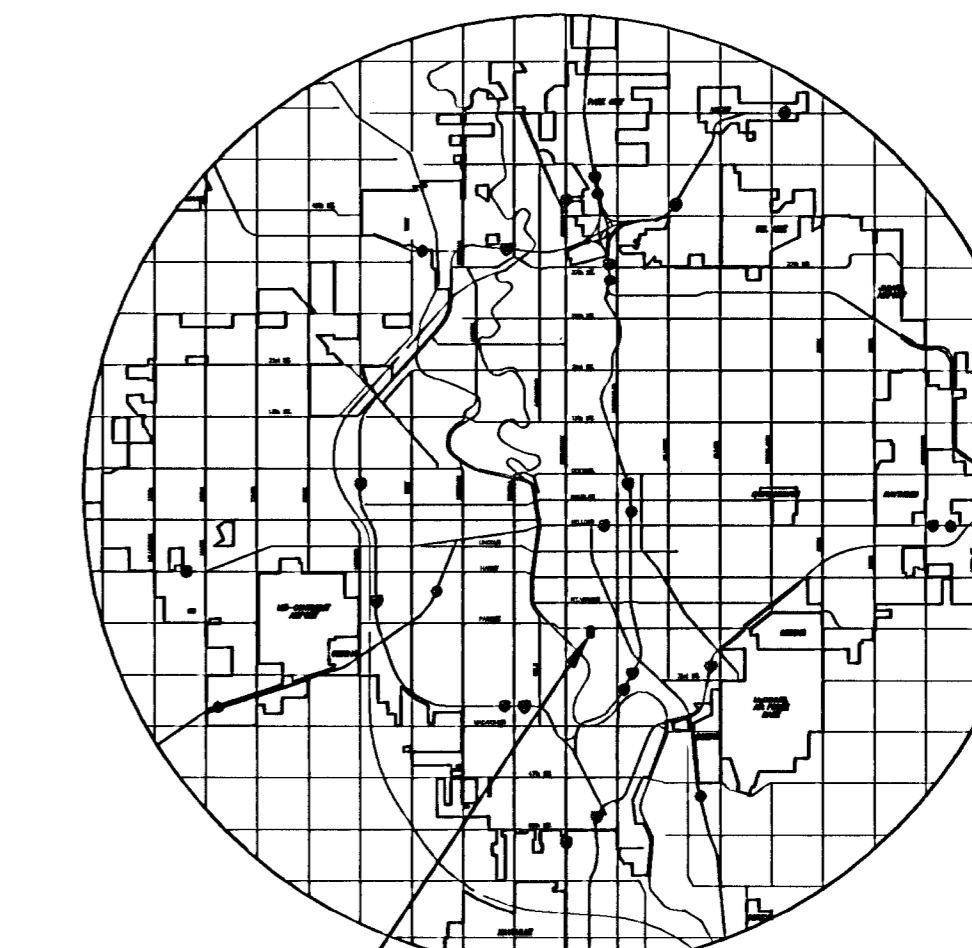


# MOSLEY CUL-DE-SAC PAVING PROJECT NO. 472-83891

JIM ARMOUR, P.E. - CITY ENGINEER

## OCA 765846



SITE LOCATION  
LOCATION MAP

### GENERAL NOTES

UNLESS SHOWN OR STATED OTHERWISE ON THESE DRAWINGS, MATERIALS AND CONSTRUCTION SHALL BE IN ACCORDANCE WITH CITY OF WICHITA CONCRETE PAVEMENT AND ASPHALTIC CONCRETE PAVEMENT SPECIFICATIONS.

CONTRACTOR WILL BE REQUIRED TO PROVIDE A MINIMUM ADVANCE NOTICE OF SEVENTY-TWO (72) HOURS TO UTILITY COMPANIES PRIOR TO STARTING ANY EXCAVATION AS FOLLOWS:

KANSAS ONE-CALL 1-800-344-7233  
OR 687-2470 (LOCAL WICHITA)

THE CONTRACTOR MUST NOTIFY THE FOLLOWING IN CASE OF AN EMERGENCY:

SBC (TELEPHONE) 800-870-8390  
COX COMMUNICATIONS (CABLE) 262-0661  
WESTAR (ELECTRIC) 383-8600  
KANSAS GAS SERVICE (GAS) 832-3101  
CITY OF WICHITA WATER & SEWER MAINT. 262-6000  
AQUILA (GAS) 946-0096

THE CONTRACTOR SHALL BE RESPONSIBLE FOR PRESERVING PROPERTY IRONS. THE CONTRACTOR WILL BE REQUIRED TO REESTABLISH ANY PROPERTY IRONS WHICH ARE DAMAGED OR DESTROYED BY HIS CONSTRUCTION OPERATIONS. SUCH IRONS SHALL BE REESTABLISHED BY A LICENSED LAND SURVEYOR IN ACCORDANCE WITH STATE LAWS.

EXISTING UTILITIES AND THEIR LOCATIONS, AS SHOWN ON THE PLANS REPRESENT THE BEST INFORMATION OBTAINABLE FOR DESIGN. LOCATION INFORMATION HAS BEEN OBTAINED FROM THE VARIOUS UTILITY COMPANIES AND IS EITHER FROM COMPANY RECORD DRAWINGS OR COMPANY PROVIDED FIELD LOCATIONS. THE PLAN LOCATIONS SHOWN ARE NOT GUARANTEED. ADDITIONAL EXISTING UTILITIES MAY ALSO BE ENCOUNTERED.

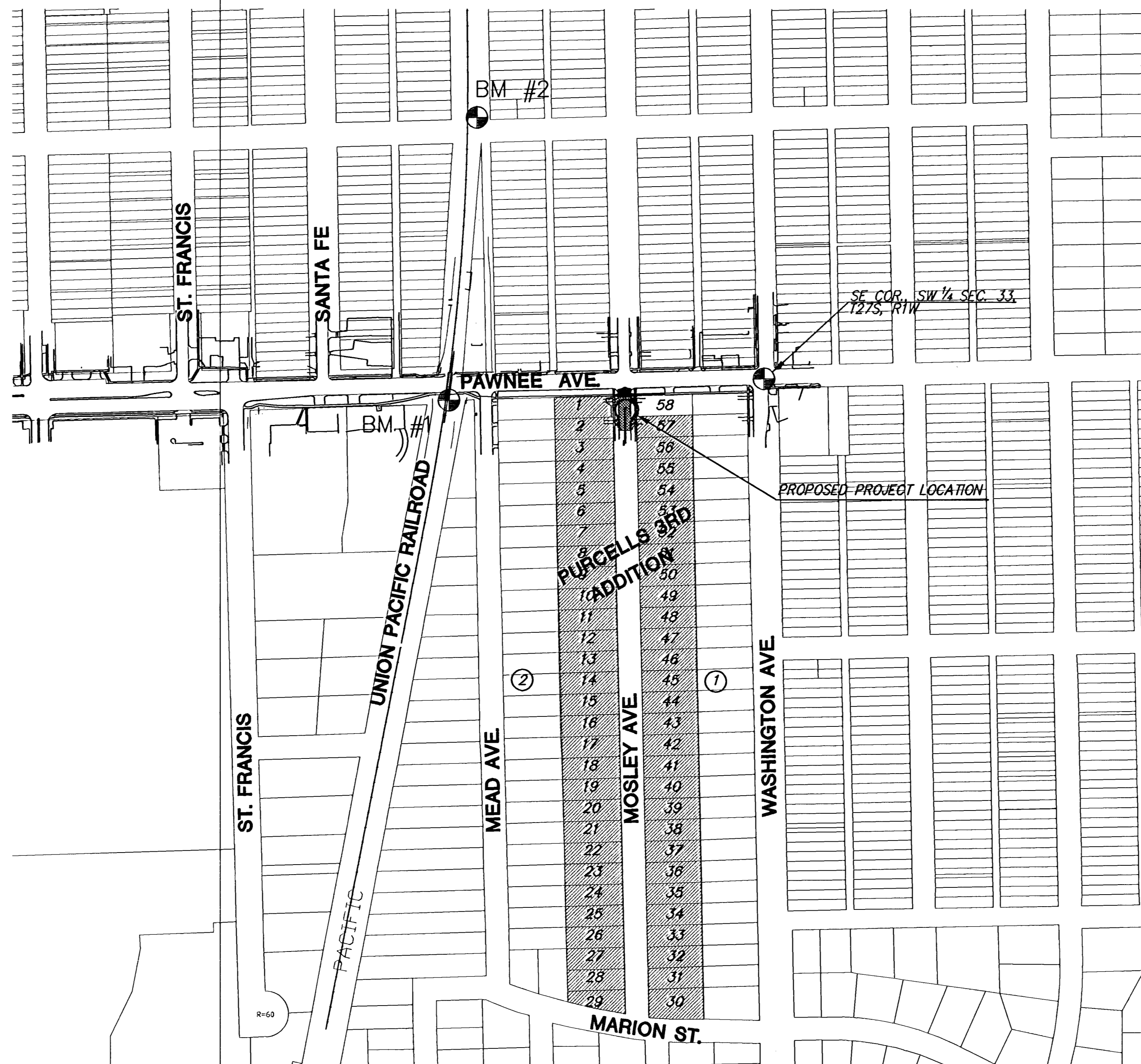
RUBBLE FROM THE REMOVAL OF MISCELLANEOUS STRUCTURES AND EXCESS EXCAVATION WHICH IS TO BE WASTED SHALL BE DISPOSED OF ON SITES TO BE PROVIDED BY THE CONTRACTOR. THESE SITES SHALL BE APPROVED BY THE ENGINEER AS TO SUITABILITY, APPEARANCE AND SITE LOCATION. LOCATIONS THAT, IN THE OPINION OF THE ENGINEER, WILL LEAVE AN UNSIGHTLY APPEARANCE WILL NOT BE APPROVED. ALL DISPOSAL SITES MUST BE APPROVED BY THE KANSAS DEPARTMENT OF HEALTH AND ENVIRONMENT. MATERIAL EITHER STOCKPILED OR DISPOSED OF IN A FLOOD PLAIN WOULD REQUIRE A KANSAS STATE BOARD OF AGRICULTURE PERMIT. ANY MATERIAL DUMPED IN WATERS OF THE UNITED STATES OR WETLANDS IS SUBJECT TO U.S. CORPS OF ENGINEERS PERMITTING REGULATIONS. ANY MATERIAL BURIED OR STOCKPILED BEYOND APPROVED CONSTRUCTION LIMITS WOULD REQUIRE ADDITIONAL ARCHAEOLOGICAL INVESTIGATIONS UNLESS BURIED IN A PREVIOUSLY APPROVED BORROW LOCATION.

A SAW CUT OF AT LEAST ONE-HALF THE DEPTH OF THE EXISTING SURFACE COURSES OR ONE-FOURTH THE DEPTH OF THE EXISTING TOTAL PAVEMENT THICKNESS SHALL BE PROVIDED AT LOCATIONS WHERE PROPOSED CONSTRUCTION ABUTS AN EXISTING SURFACE OR PAVEMENT FOR WHICH PARTIAL REMOVAL OF THAT SURFACE OR PAVEMENT IS REQUIRED. SAW JOINT TO FACILITATE REMOVAL WITHIN THREE (3) FEET OF EXISTING JOINTS WILL NOT BE PERMITTED AND FOR SUCH INSTANCES THE LIMITS OF REMOVAL SHALL EXTEND TO THE EXISTING JOINT. SUCH SAW CUTS WILL NOT BE PAID FOR DIRECTLY AND THIS COST SHALL BE CONSIDERED AS SUBSIDIARY TO THE REMOVAL OF SURFACE OR PAVEMENT.

CONTRACTOR SHALL RESEED AND MULCH ALL DISTURBED AREAS AND COVER WITH EROSION MAT (CURLX) IN ACCORDANCE WITH THE PLANS. SEEDING SHALL BE PAID FOR AS "SITE RESTORATION" AND THE EROSION MAT PAID FOR AS "EROSION CONTROL BMP'S".

CONTRACTOR TO MAINTAIN ACCESS TO PROPERTIES DURING CONSTRUCTION OR OBTAIN APPROVAL FROM AFFECTED PROPERTY OWNERS TO CLOSE PART OF ALL OF THE STREET.

SPOT ELEVATIONS SHOWN ON CURBS ARE FOR TOP OF CURB AND HIGH EDGE OF CURB AND GUTTER.



### INDEX TO DRAWINGS

SHEET NO.	DESCRIPTION
1	TITLE SHEET
2	SECTIONS AND MISC. DETAILS
3	ENTRANCE DETAILS
4	PAVING PLAN
5-6	SOIL EROSION DETAILS
7	CROSS SECTIONS



### BENCHMARKS

- BM #1**
- FOUND 3/8" Ø REBAR W/ALUM. CAP STAMPED "WCI" & CENTERED PUNCH 0.10' BELOW SURFACE
  - N 1672577.27, E 1651481.60
  - NW TO SE BOLT ON BASE OF OVERHEAD RR CROSSING SIGNAL 32.03' NW
  - ESE TO NW COR OF UPRR SIGNAL HOUSE 12.64' ESE
  - SE TO SW COR OF UPRR SIGNAL HOUSE 15.75' SE
  - N TO S EDGE OF SIDEWALK 18.98' N
  - ELEV.=1289.68

- BM #2**
- FOUND 3/8" Ø REBAR W/ALUM. CAP STAMPED "WC2" & CENTERED PUNCHED 0.10' BELOW SURFACE
  - N 1675049.68, E 1651526.94
  - SW COR OF METAL SIDED BLDG. AT GROUND (ROTO ROOTER) 85.85' NNE
  - SW COR OF METAL SIDED BLDG. AT GROUND (GARAGE 2028) 62.65' E
  - NW COR OF METAL SIDED BLDG. AT GROUND (BLDG 2030) 76.42' SSE
  - E RAIL OF UPRR 20.40' W
  - ELEV.=1289.66

SCALE: 1" = 200'

BENEFIT DISTRICT

**MOSLEY CUL-DE-SAC**  
PROJECT NAME

---

**TITLE SHEET**  
SHEET TITLE

---

JRA DESIGN BY: HWJ DRAWN BY: JRA CHECKED BY:

---

JULY 2007 DATE: 04100 JOB NO. 1 / 7 SHEET/OF

411 N. WEBB ROAD  
WICHITA, KS. 67206  
316 - 684 - 9600