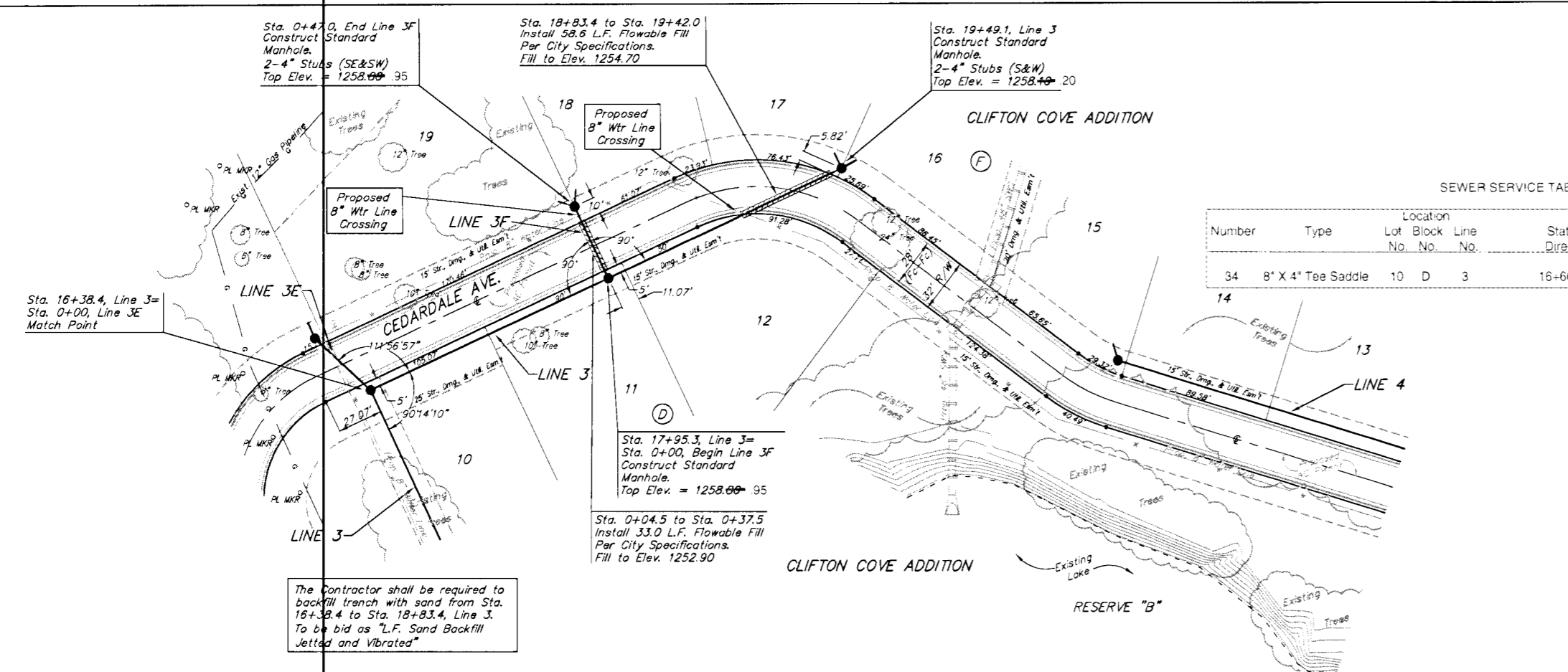


BENCHMARK:
Arkansas River bridge & 63rd St. S. City of
Wichita Benchmark Disc. SW Cor. of bridge,
top of hubguard, 500'± E. of Grava.
Elev. = 1269.95 NGVD29 (per City record)

Brass plate on the NE wingwall of Arkansas
River bridge & 63rd St. S.
Elev. = 1267.48 NGVD29 (per County record)



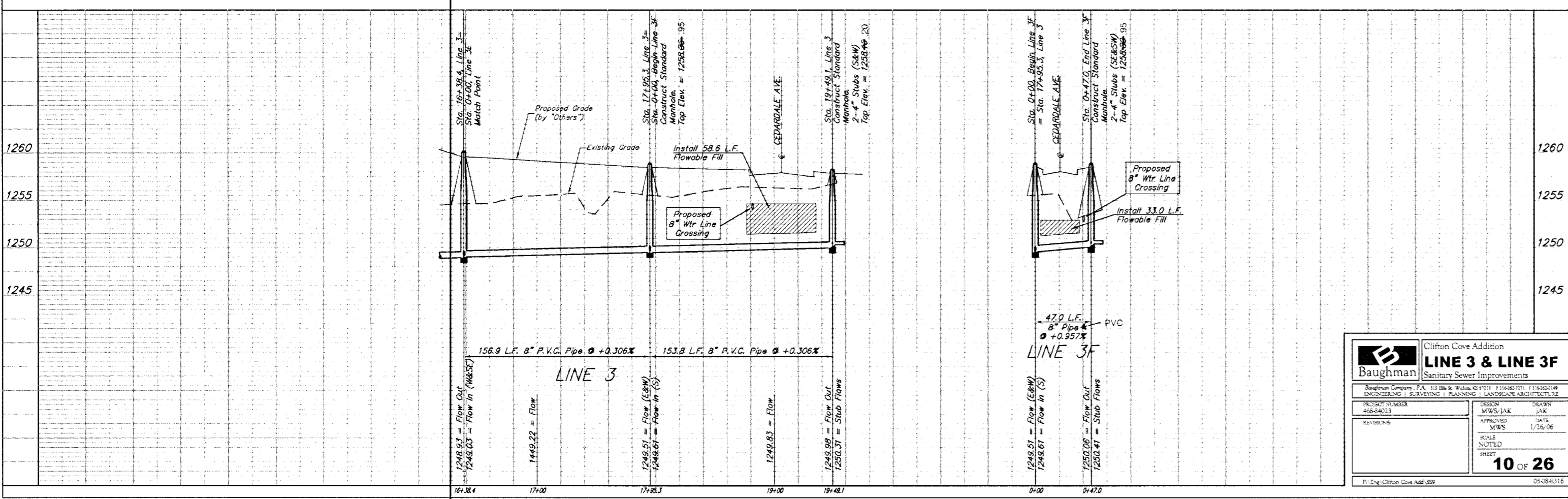
SEWER SERVICE TABLE

Number	Type	Location Lot Block No. No.	Station/ Direction	Approximate Length 4" Pipe Vertical Horizontal
34	8" X 4" Tee Saddle	10 D 3	16+66 Rt	8' 20'

For information Only

SCALE:
1" = 40' HORIZONTAL
1" = 5' VERTICAL
• = IRON

The Contractor shall be required to
backfill trench with sand from Sta.
16+38.4 to Sta. 18+83.4, Line 3.
To be bid as "L.F. Sand Backfill
Jetted and Vibrated"



Clifton Cove Addition
LINE 3 & LINE 3F
Sanitary Sewer Improvements

PREPARED BY: MWS/JAK
DESIGN: MWS/JAK
APPROVED: MWS
DATE: 1/26/06
SCALE: AS SHOWN
NOTED: DATE
SHEET: 10 OF 26

03-08-118