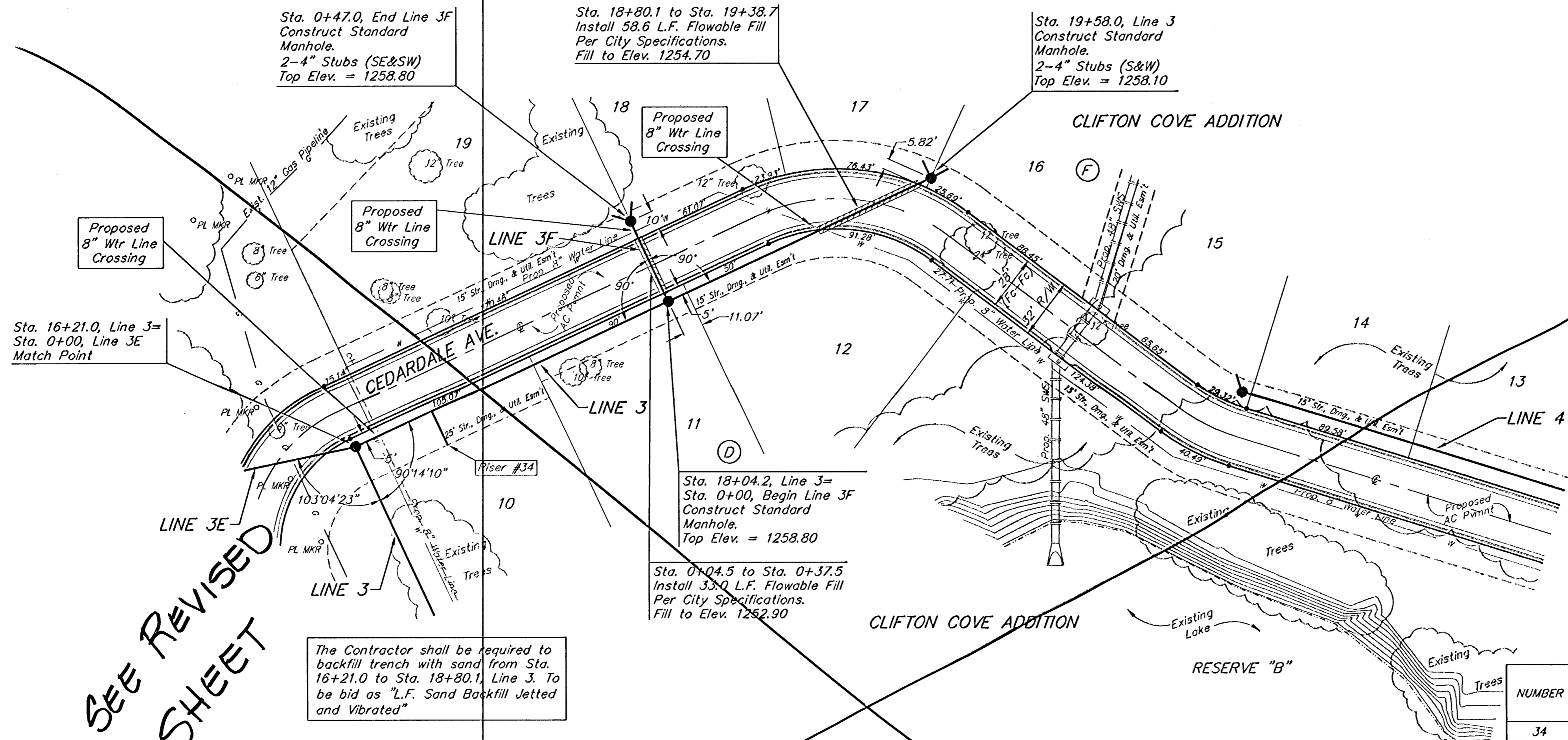


**BENCHMARK:**  
 Arkansas River bridge & 63rd St. S. City of  
 Wichita Benchmark Disc. SW Cor. of bridge,  
 top of hubguard, 500'± E. of Grave.  
 Elev. = 1269.95 NGVD29 (per City record)  
 Brass plate on the NE wingwall of Arkansas  
 River bridge & 63rd St. S.  
 Elev. = 1267.48 NGVD29 (per County record)



SCALE:  
 1" = 40' HORIZONTAL  
 1" = 5' VERTICAL  
 • = IRON

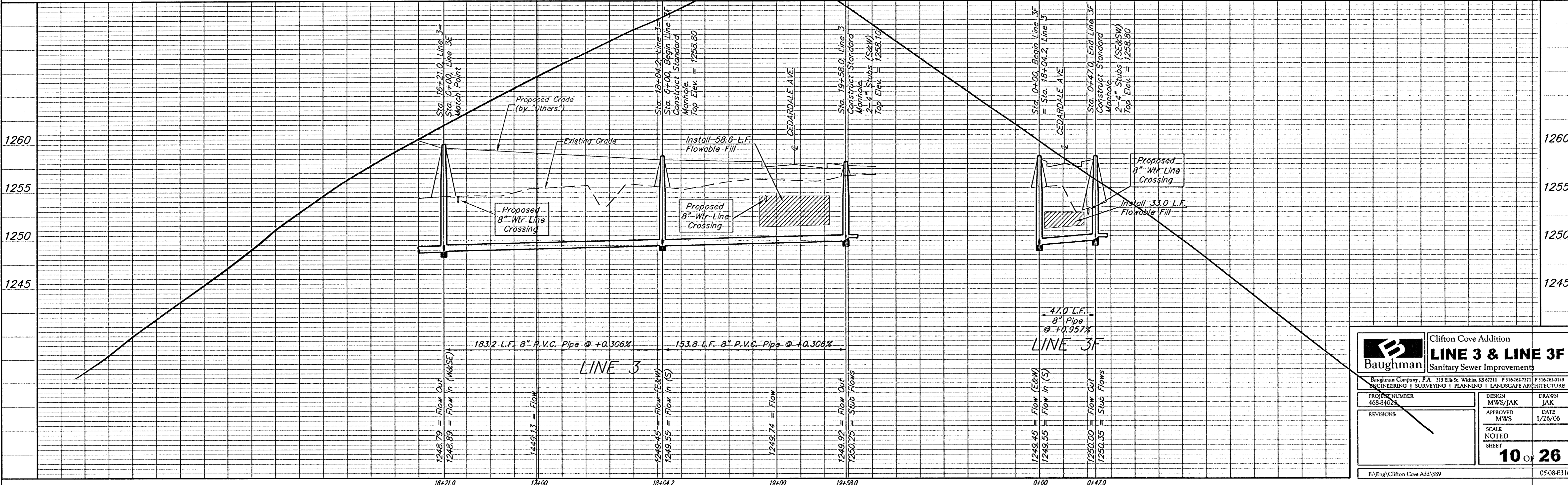
SEE REVISED SHEET

The Contractor shall be required to backfill trench with sand from Sta. 16+21.0 to Sta. 18+80.1, Line 3. To be bid as "L.F. Sand Backfill Jetted and Vibrated"

SEWER SERVICE TABLE

NUMBER	TYPE	LOCATION			FOR INFORMATION ONLY		
		LOT NO.	BLOCK NO.	LINE NO.	STATION/DIRECTION	APPROXIMATE LENGTH 4" PIPE	
						VERTICAL	HORIZONTAL
34	8" X 4" Tee Saddle	10	D	3	16+66/RI.	8'	20'

NOTE: Vertical Riser Pipe shall be extended to 2' minimum above ground water elevation and 4' maximum below proposed ground elevation.



**Baughman** Clifton Cove Addition  
**LINE 3 & LINE 3F**  
 Sanitary Sewer Improvements

Baughman Company, P.A. 315 Ellis St. Wichita, KS 67211 P 316-262-7271 F 316-262-0149  
 ENGINEERING | SURVEYING | PLANNING | LANDSCAPE ARCHITECTURE

PROJECT NUMBER 468-8402	DESIGN MWS/JAK	DRAWN JAK
REVISIONS:	APPROVED MWS	DATE 1/26/06
SCALE NOTED SHEET		<b>10 OF 26</b>

F:\Eng\Clifton Cove Add\SS9 0508E316