

WOODLAND LAKES THIRD AND FOURTH ADDITION

GENERAL NOTES

- UNLESS SHOWN OR STATED OTHERWISE ON THESE DRAWINGS, MATERIALS AND CONSTRUCTION SHALL BE IN ACCORDANCE WITH CITY OF WICHITA CONCRETE PAVEMENT AND ASPHALTIC CONCRETE PAVEMENT SPECIFICATIONS.
- THE CONTRACTOR SHALL BE RESPONSIBLE FOR PRESERVING PROPERTY IRONS. THE CONTRACTOR WILL BE REQUIRED TO RE-ESTABLISH ANY PROPERTY IRONS WHICH ARE DAMAGED OR DESTROYED BY HIS CONSTRUCTION OPERATIONS. SUCH IRONS SHALL BE RE-ESTABLISHED BY A LICENSED LAND SURVEYOR IN ACCORDANCE WITH STATE LAWS.
- TRANSITION CURB FROM FULL HEIGHT COMBINATION CURB AND GUTTER TO ROLL TYPE COMBINATION CURB AND GUTTER IS TO BE PAID AS BID FOR LINEAL FEET COMBINED CURB AND GUTTER (3 5/8" ROLL).
- EXISTING UTILITIES AND THEIR LOCATIONS, AS SHOWN ON THE PLANS REPRESENT THE BEST INFORMATION OBTAINABLE FOR DESIGN. LOCATION INFORMATION HAS BEEN OBTAINED FROM THE VARIOUS UTILITY COMPANIES AND IS EITHER FROM COMPANY RECORD DRAWINGS OR COMPANY PROVIDED FIELD LOCATIONS. THE PLAN LOCATIONS SHOWN ARE NOT GUARANTEED. ADDITIONAL EXISTING UTILITIES MAY ALSO BE ENCOUNTERED.
- CONTRACTOR WILL BE REQUIRED TO PROVIDE A MINIMUM ADVANCE NOTICE OF SEVENTY-TWO (72) HOURS TO UTILITY COMPANIES PRIOR TO STARTING ANY EXCAVATION AS FOLLOWS:
 KANSAS ONE-CALL 1-800-344-7233
 OR 687-2470 (LOCAL WICHITA)
 THE CONTRACTOR MUST NOTIFY THE FOLLOWING IN CASE OF AN EMERGENCY:
 SBC (TELEPHONE) 800-870-8390
 COX COMMUNICATIONS (CABLE) 262-0661
 WESTAR (ELECTRIC) 383-8600
 KANSAS GAS SERVICE (GAS) 832-3101
 CITY OF WICHITA WATER & SEWER MAINT. 262-6000
 WILLIAMS NATURAL GAS 524-4390
- RUBBLE FROM THE REMOVAL OF MISCELLANEOUS STRUCTURES AND EXCESS EXCAVATION WHICH IS TO BE WASTED SHALL BE DISPOSED OF ON SITES TO BE PROVIDED BY THE CONTRACTOR. THESE SITES SHALL BE APPROVED BY THE ENGINEER AS TO SUITABILITY, APPEARANCE AND SITE LOCATION. LOCATIONS THAT, IN THE OPINION OF THE ENGINEER, WILL LEAVE AN UNSIGHTLY APPEARANCE WILL NOT BE APPROVED. ALL DISPOSAL SITES MUST BE APPROVED BY THE KANSAS DEPARTMENT OF HEALTH AND ENVIRONMENT. MATERIAL EITHER STOCKPILED OR DISPOSED OF IN A FLOOD PLAIN WOULD REQUIRE A KANSAS STATE BOARD OF AGRICULTURE PERMIT. ANY MATERIAL DUMPED IN WATERS OF THE UNITED STATES OR WETLANDS IS SUBJECT TO U.S. CORPS OF ENGINEERS PERMITTING REGULATIONS. ANY MATERIAL BURIED OR STOCKPILED BEYOND APPROVED CONSTRUCTION LIMITS WOULD REQUIRE ADDITIONAL ARCHAEOLOGICAL INVESTIGATIONS UNLESS BURIED IN A PREVIOUSLY APPROVED BORROW LOCATION.
- A SAW CUT OF AT LEAST ONE-HALF THE DEPTH OF THE EXISTING SURFACE COURSES OR ONE-FOURTH THE DEPTH OF THE EXISTING TOTAL PAVEMENT THICKNESS SHALL BE PROVIDED AT LOCATIONS WHERE PROPOSED CONSTRUCTION ABUTS AN EXISTING SURFACE OR PAVEMENT FOR WHICH PARTIAL REMOVAL OF THAT SURFACE OR PAVEMENT IS REQUIRED. SAW JOINT TO FACILITATE REMOVAL WITHIN THREE (3) FEET OF EXISTING JOINTS WILL NOT BE PERMITTED AND FOR SUCH INSTANCES THE LIMITS OF REMOVAL SHALL EXTEND TO THE EXISTING JOINT. SUCH SAW CUTS WILL NOT BE PAID FOR DIRECTLY AND THIS COST SHALL BE CONSIDERED AS SUBSIDIARY TO THE REMOVAL OF SURFACE OR PAVEMENT.
- CONTRACTOR SHALL PROVIDE TEMPORARY SEDIMENT CONTROL AT ALL INLETS. SUCH CONTROL SHALL BE MAINTAINED UNTIL AND UPON CEMENTATION OF SEEDING. ACCEPTABLE MEANS OF CONTROL SHALL BE APPROVED BY ENGINEER. COST SHALL BE CONSIDERED SUBSIDIARY TO SITE CLEARING AND RESTORATION. (REFER TO SHEET FOR EROSION CONTROL MEASURES.)
- EQUIPMENT AND CONSTRUCTION MATERIALS SHALL REMAIN OUT OF AND AWAY FROM TREE DRIP LINES SO AS TO NOT COMPACT THE ROOT ZONE OR DAMAGE THE TREE.
- CONTRACTOR SHALL RESEED AND MULCH ALL DISTURBED AREAS WITH RYE GRASS AT A RATE OF 200 POUNDS PER ACRE. COST SHALL BE CONSIDERED SUBSIDIARY TO SITE RESTORATION.
- THIS PROJECT INCLUDES A CERTAIN AMOUNT OF ROLL TYPE CURB CONSTRUCTION. ROLL CURBS SHALL BE DEPRESSED THROUGH ALL DRIVEWAY OPENINGS WHEN SUCH DRIVES ARE CONSTRUCTED AS A PART OF THE PROJECT. NO MORE THAN 2 DRIVES 20 FEET IN WIDTH OR EQUIVALENT COMBINATIONS THEREOF ARE TO BE CONSTRUCTED WITH THIS PROJECT.
- CONTRACTOR SHALL USE EXISTING ON SITE STOCKPILES TO COMPLETE LOT FILLS TO THE TYPICAL SECTION SHOWN ON SHEET 3 OF 31. DIRT SHALL NOT BE IMPORTED TO COMPLETE LOT FILLS. HOWEVER, ALL EXISTING ON SITE STOCKPILES AND EXCESS EXCAVATION SHALL BE PLACED AS LOT FILL.

LENGTH OF PROJECT	
29' BK.-BK.	913 FT.
35' BK.-BK.	631 FT.
EARTHWORK SUMMARY	
EXCAVATION	5860 C.Y.
LOOSE FILL	4900 C.Y.
COMPACTED FILL	960 C.Y.

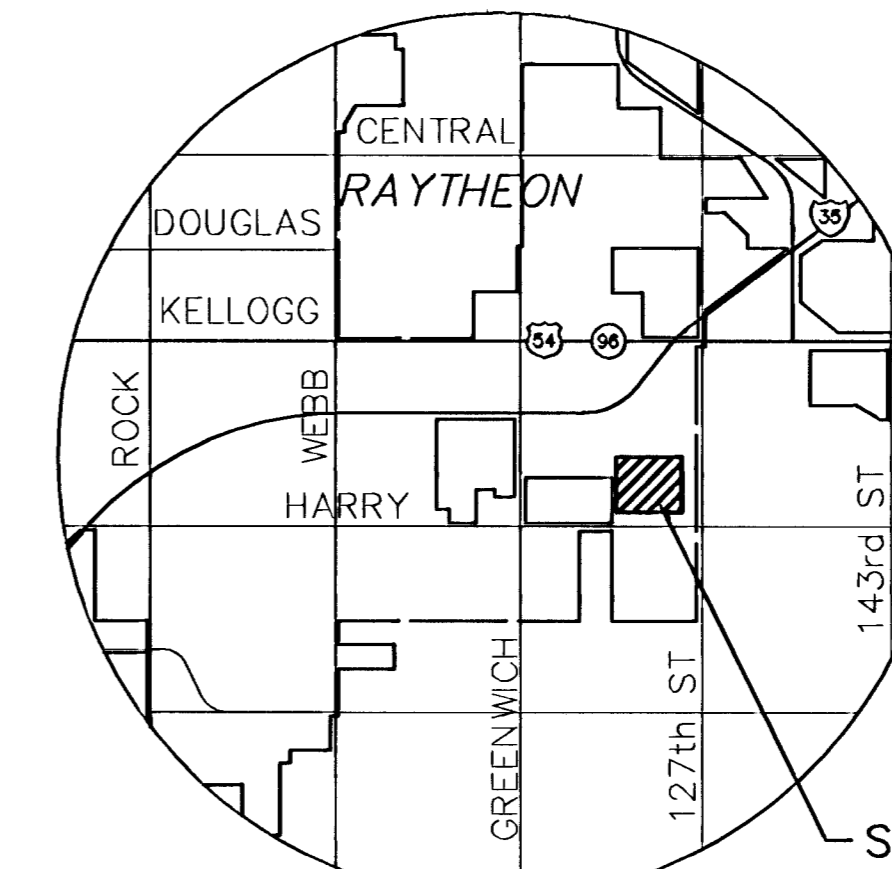
PAVING STREETS AND INCIDENTAL DRAINAGE IN

AN ADDITION TO THE CITY OF WICHITA
 SEDGWICK COUNTY, KANSAS

PROJECT NO. 472-83718

JIM ARMOUR, P.E. - CITY ENGINEER

OCA - 765989



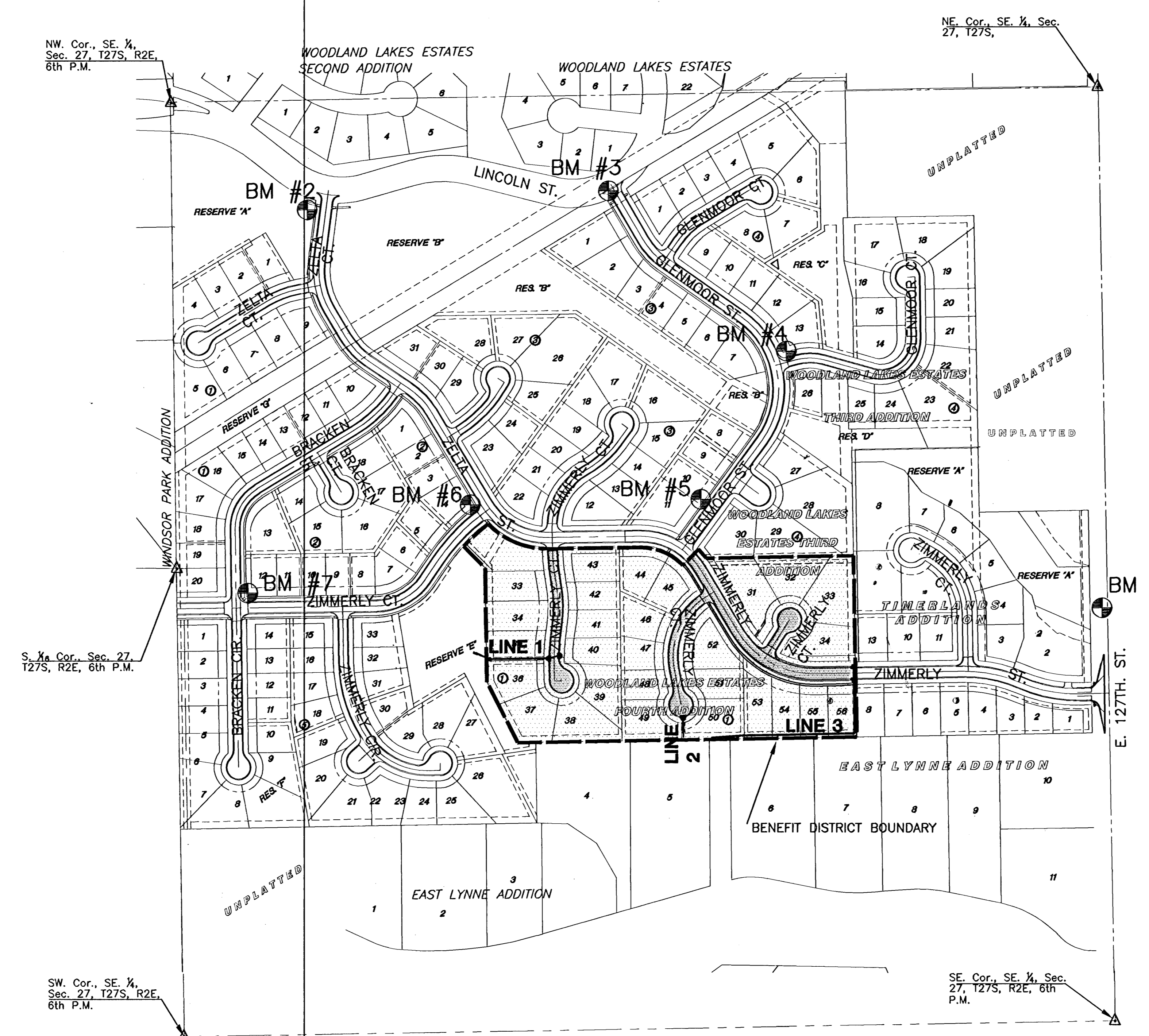
VICINITY MAP

SITE LOCATION

INDEX TO DRAWINGS

SHEET NO.	DESCRIPTION
1	TITLE SHEET
2	BUBBLE MAP
3-4	TYP. PAVT. SECTIONS
5	VALLEY GUTTER DETAILS
6	WHEELCHAIR RAMP DETAILS
7	SIGNING DETAILS
8-9	ZIMMERLY STREET
10	ZIMMERLY CT.
11	ZIMMERLY CT.
12	ZIMMERLY CT.
13	INLET DETAILS
14	MANHOLE DETAILS
15	SHALLOW MANHOLE DETAILS
16	LINE 1 & 2
17-18	LINE 3
19	EROSION CONTROL PLAN
20	LOTS 33-35 GRADING PLAN
21-23	EROSION DETAILS
24-34	CROSS SECTIONS
35-36	FINAL PLAT

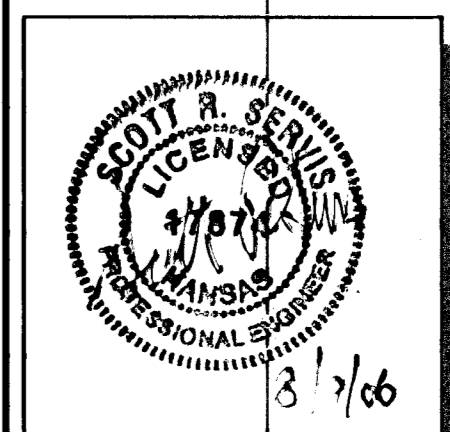
SCALE: 1" = 200'



BENCHMARKS

BM#	ELEVATION	DESCRIPTION
1	1346.58	Chiseled square on East end of North headwall of RCB, 31' East and 11' North of the Center of Section 27, Township 27 South, Range 2 East.
2	1340.42	T-post on Southwest corner of Zelta and Lincoln, 5' Southwest of the Northeast corner of Reserve A.
3	1338.37	T-post on Southwest corner of Glenmoor and Lincoln, 5' Southwest of the Northeast corner of Reserve B.
4	1329.64	T-post 5' North of the Southwest corner of Lot 13, Block 4.
5	1340.26	T-post 5' North of the Southeast corner of Lot 11, Block 3.
6	1339.14	T-post 5' West of the "East" corner of Lot 4, Block 2.
7	1338.12	T-post 5' Northeast of the Southwest corner of Lot 12, Block 2.

MKEC
 ENGINEERING
 CONSULTANTS, INC.
 411 N. WEBB ROAD
 WICHITA, KS. 67206
 316-684-9600



PAVING STREETS AND INCIDENTAL DRAINAGE
WOODLAND LAKES 3RD & 4TH
ZIMMERLY PHASE

TITLE SHEET
 SHEET TITLE
 PROJECT NUMBER
 472-83718

DESIGN BY: SRS
 DRAWN BY: DM/SMB
 CHECKED BY: GJA

ISSUED: AUGUST 2006
 REVISED:

SHEET NO.
1 of 36

PLOTTED: Thursday, August 08, 2008 9:04 AM