

CURVE TABLE C6					
$\Delta = 09^{\circ}51'40''$ R = 600.00' T = 51.76' L = 103.27' LC = 103.14'					
CURVE DATA BASED ON CENTERLINE $\Delta/2 = 04^{\circ}55'50''$					
CHORD LENGTH					
STATION	ARC	8' Off LtcB	8' Off RicB	DEFLECTION	TOTAL DEFLECTION
12+77.07	-	-	-	00'00'00"	00'00'00"
13+00.00	22.93'	23.77'	22.09'	01'05'41"	01'05'41"
13+25.00	25.00'	25.91'	24.08'	01'11'37"	02'17'19"
13+50.00	25.00'	25.91'	24.08'	01'11'37"	03'28'56"
13+75.00	25.00'	25.91'	24.08'	01'11'37"	04'40'33"
13+80.34	5.34'	5.53'	5.14'	00'15'17"	04'55'50"
Def/Ft = 2.86479 Min.					

MKEC
ENGINEERING
CONSULTANTS, INC.

411 N. WEBB ROAD
WICHITA, K.S. 67206
316-684-9600

PROP. CURB INLET TOP = 1334.98
CONST. INLET HOOKUP W/PVMT.
UNDERDRAIN. INSTALL SEDIMENT
BARRIER.

P.V.I.
ELEV. = 1334.52
V.C. = 100'

WOODLAND LAKES ESTATES
FOURTH ADDITION

P.V.I.
ELEV. = 1341.10
V.C. = 90'

CONSTRUCT 10'
TRANSITION FROM ROLL
CURB TO FULL CURB

Sta. 13+32.8, 25' Rt.
INSTALL ST. NAME SIGN
Zimmerly Ct.
Zimmerly St. 12301-12341

PAVING AND INCIDENTAL DRAINAGE PLANS
WOODLAND LAKES 3RD & 4TH
ZIMMERLY PHASE

ZIMMERLY
CT.
SHEET TITLE
472-83718
PROJECT NUMBER

DESIGN BY SRS
DRAWN BY DM/SMB
CHECKED BY GJA

ISSUED
AUGUST 2006
REVISED

ISSUED
AUGUST 2006
REVISED

ISSUED
AUGUST 2006
REVISED

ISSUED
AUGUST 2006
REVISED

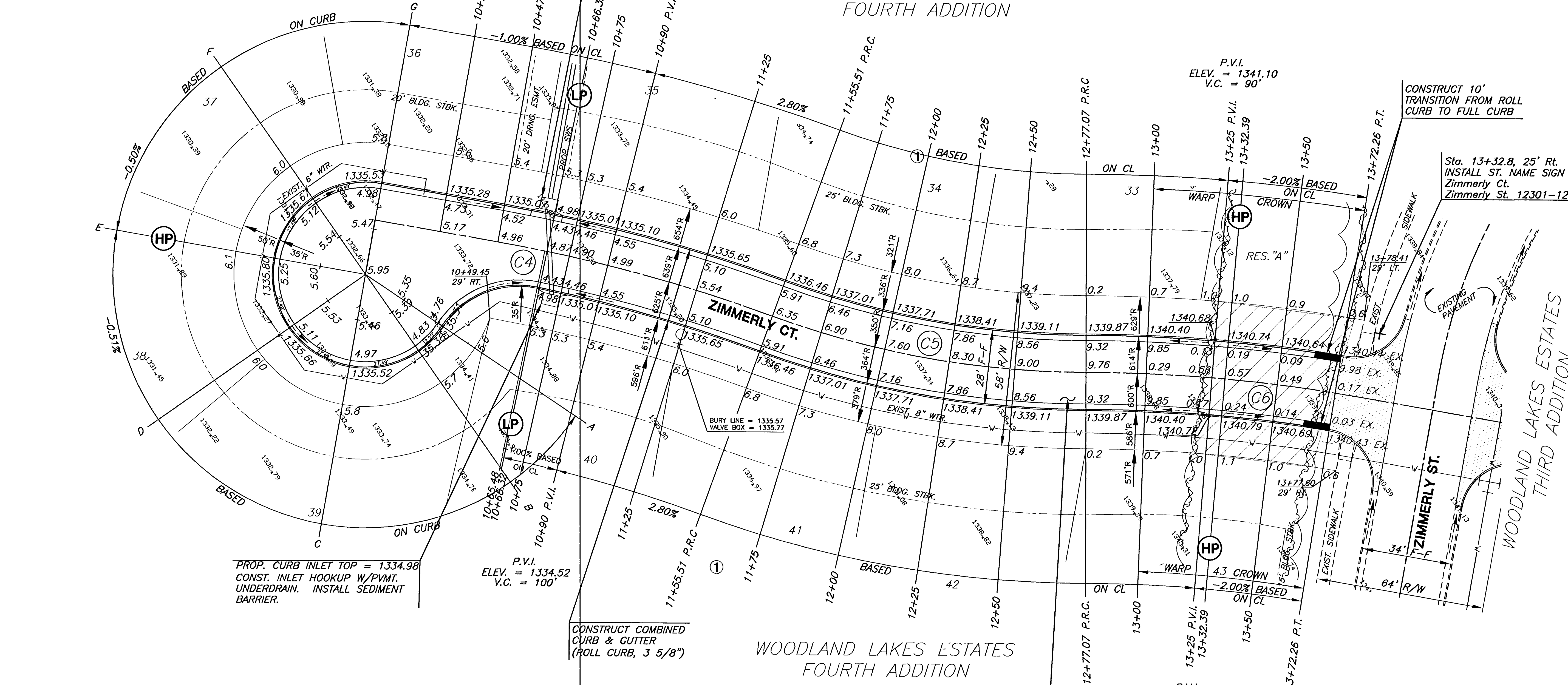
ISSUED
AUGUST 2006
REVISED

ISSUED
AUGUST 2006
REVISED

ISSUED
AUGUST 2006
REVISED

ISSUED
AUGUST 2006
REVISED

ISSUED
AUGUST 2006
REVISED



PROP. CURB INLET TOP = 1334.98
CONST. INLET HOOKUP W/PVMT.
UNDERDRAIN. INSTALL SEDIMENT
BARRIER.

P.V.I.
ELEV. = 1334.52
V.C. = 100'

CONSTRUCT COMBINED
CURB & GUTTER
(ROLL CURB, 3 5/8")

WOODLAND LAKES ESTATES
FOURTH ADDITION

CONST. 5" A.C. PAVEMENT
W/ 3" BIT. BASE OVER 5"
CRUSHED ROCK BASE ON
GEOGRID REINFORCEMENT.

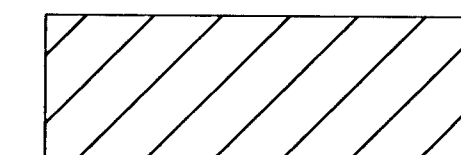
P.V.I.
ELEV. = 1341.10
V.C. = 90'

CURVE TABLE C4					
$\Delta = 09^{\circ}55'06''$ R = 625.00' T = 54.23' L = 108.19' LC = 108.06'					
CURVE DATA BASED ON CENTERLINE $\Delta/2 = 04^{\circ}57'33''$					
CHORD LENGTH					
STATION	ARC	8' Off LtcB	8' Off RicB	DEFLECTION	TOTAL DEFLECTION
10+47.32	-	-	-	00'00'00"	00'00'00"
10+75.00	27.68'	28.65'	26.70'	01'16'08"	01'16'08"
11+00.00	25.00'	25.88'	24.12'	01'08'45"	02'24'53"
11+25.00	25.00'	25.88'	24.12'	01'08'45"	03'33'38"
11+50.00	25.00'	25.88'	24.12'	01'08'45"	04'42'23"
11+55.51	5.51'	5.71'	5.32'	00'15'10"	04'57'33"
Def/Ft = 2.75020 Min.					

CURVE TABLE C5					
$\Delta = 19^{\circ}53'59''$ R = 350.00' T = 61.40' L = 121.56' LC = 120.95'					
CURVE DATA BASED ON CENTERLINE $\Delta/2 = 09^{\circ}57'00''$					
CHORD LENGTH					
STATION	ARC	8' Off LtcB	8' Off RicB	DEFLECTION	TOTAL DEFLECTION
11+55.51	-	-	-	00'00'00"	00'00'00"
11+75.00	19.49'	18.26'	20.71'	01'35'43"	01'35'43"
12+00.00	25.00'	23.42'	26.57'	02'02'47"	03'38'50"
12+25.00	25.00'	23.42'	26.57'	02'02'47"	05'41'16"
12+50.00	25.00'	23.42'	26.57'	02'02'47"	07'44'03"
12+75.00	25.00'	23.42'	26.57'	02'02'47"	09'46'49"
12+77.07	2.07'	1.94'	2.20'	00'10'10"	09'57'00"
Def/Ft = 4.91107 Min.					

LEGEND

+ STREET SIGN & SIGN LOCATION
(SEE SIGN ASSEMBLY TABLE
FOR TYPE & STATION OF SIGN)



- TREE REMOVAL

NOTE:

- TOP OF CURB ELEVATIONS SHOWN ARE FOR FULL CURB. CONSTRUCT CURB AS NOTED.
- CONTRACTOR SHALL REMOVE ALL TREES WITHIN ROAD RIGHT-OF-WAY.