

PAVING & INCIDENTAL DRAINAGE
WOODLAND LAKES 3RD & 4TH
 ZIMMERLY PHASE

SWS
LINE 3
 SHEET TITLE
472-83718
 PROJECT NUMBER

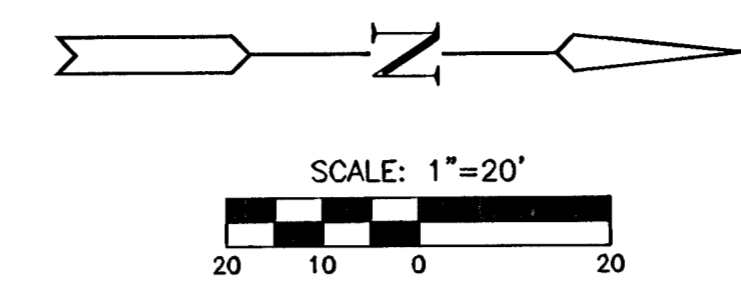
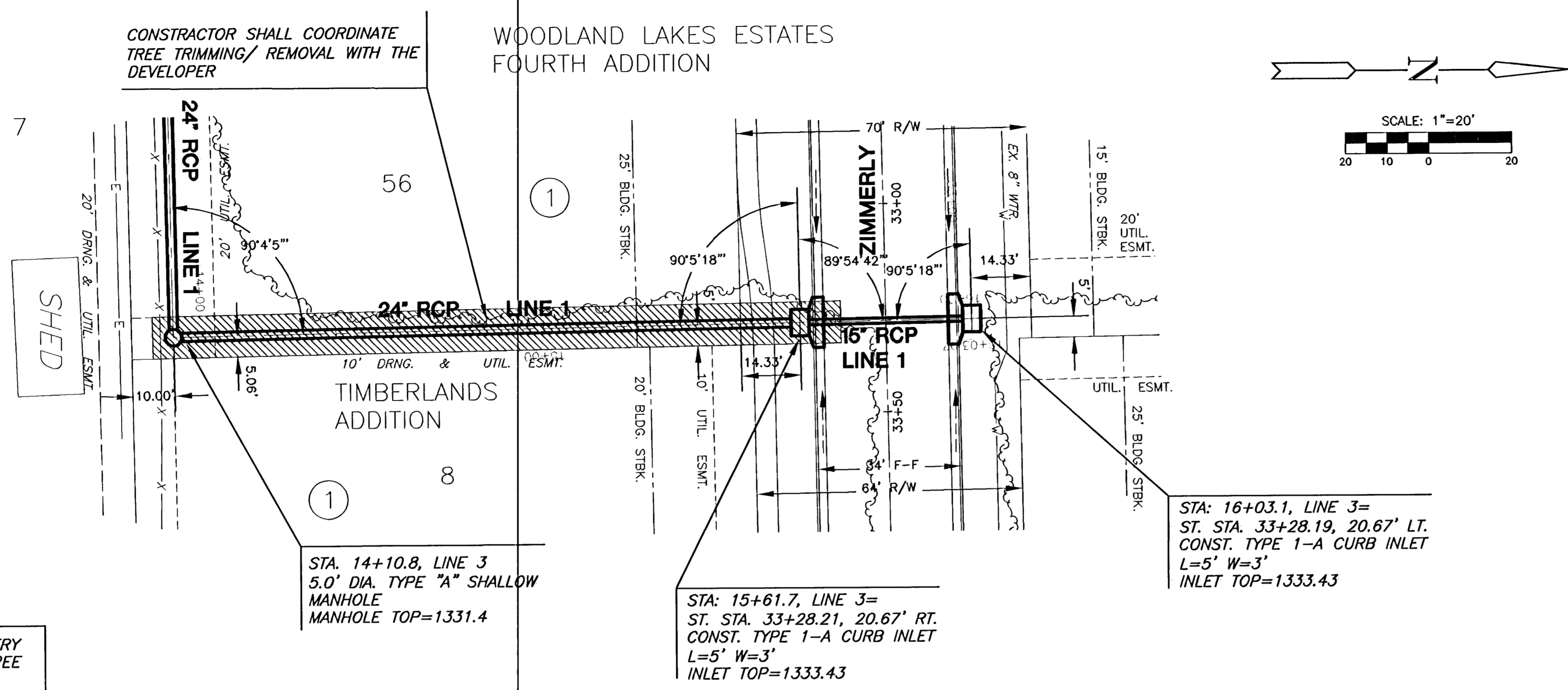
SRS
 DESIGN BY
DM
 DRAWN BY
GJA
 CHECKED BY

ISSUED
AUGUST 2006
 REVISED

SHEET NO.
18 of 36

WOODLAND LAKES ESTATES
 FOURTH ADDITION

EAST LYNNE
 ADDITION



NOTE: CONTRACTOR SHALL MAKE EVERY EFFORT TO SAVE EXISTING TREES. TREE TRIMMING/REMOVAL, WHEN REQUIRED, SHALL BE APPROVED BY THE DEVELOPER PRIOR TO COMMENCEMENT.

PLAN LINE 3

- TREE REMOVAL

PROFILE LINE 3

SCALE: HORIZ. 1"=20'
 SCALE: VERT. 1"=5'

