

EROSION CONTROL PLAN LEGEND

- LIGHT STONE RIP-RAP
- DROP INLET PROTECTION
- CURB INLET PROTECTION
- STRAW BALE BARRIERS
- SILT FENCING
- EARTH DIKES

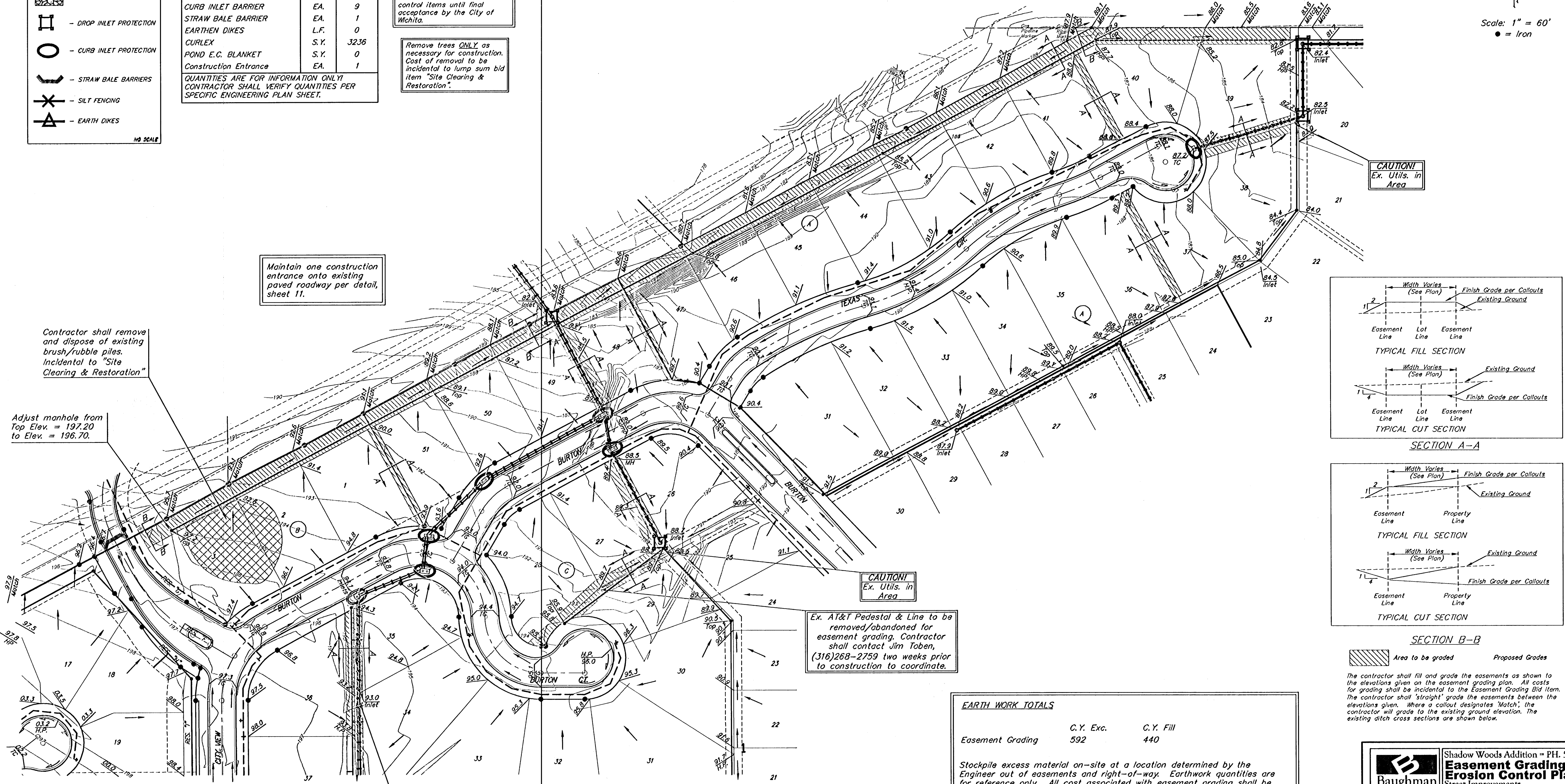
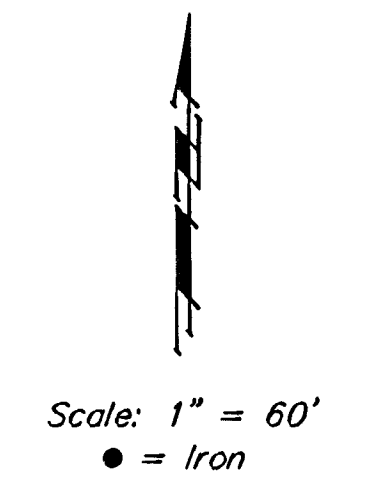
NO SCALE

EROSION CONTROL MEASURE	UNITS	QUANTITY
SILT FENCE	L.F.	0
RIPRAP	S.Y.	PLAN
DROP INLET BARRIER	EA.	4
CURB INLET BARRIER	EA.	9
STRAW BALE BARRIER	EA.	1
EARTHEN DIKES	L.F.	0
CURLEX	S.Y.	3236
POND E.C. BLANKET	S.Y.	0
Construction Entrance	EA.	1

QUANTITIES ARE FOR INFORMATION ONLY
CONTRACTOR SHALL VERIFY QUANTITIES PER
SPECIFIC ENGINEERING PLAN SHEET.

NOTE: Contractor shall remove & replace existing erosion control measures as necessary for construction. Contractor shall be required to maintain all on-site erosion control items until final acceptance by the City of Wichita.

Remove trees ONLY as necessary for construction. Cost of removal to be incidental to lump sum bid item "Site Clearing & Restoration".



Maintain one construction entrance onto existing paved roadway per detail, sheet 11.

Contractor shall remove and dispose of existing brush/rubble piles. Incidental to "Site Clearing & Restoration"

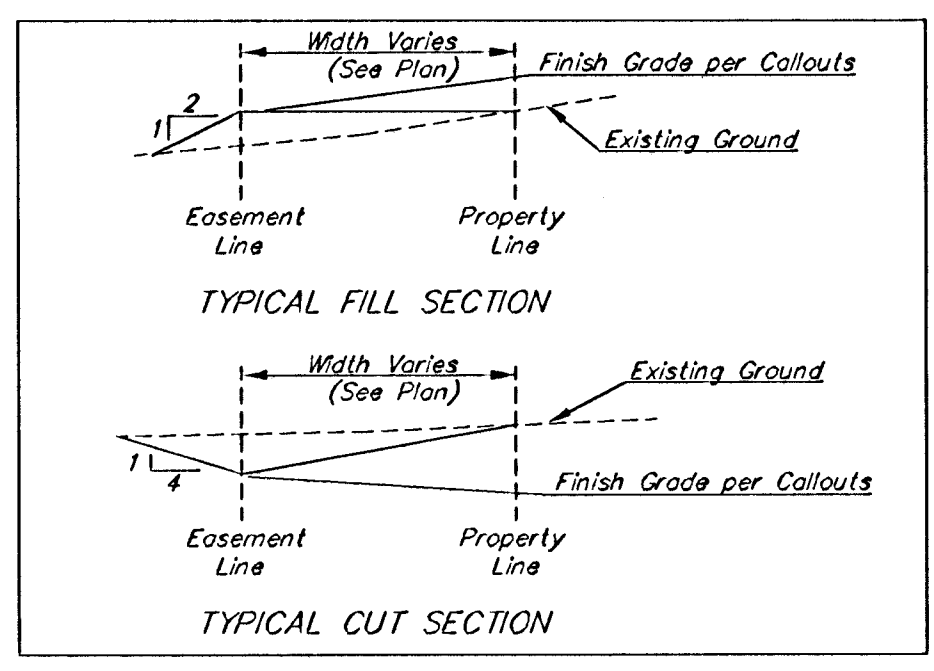
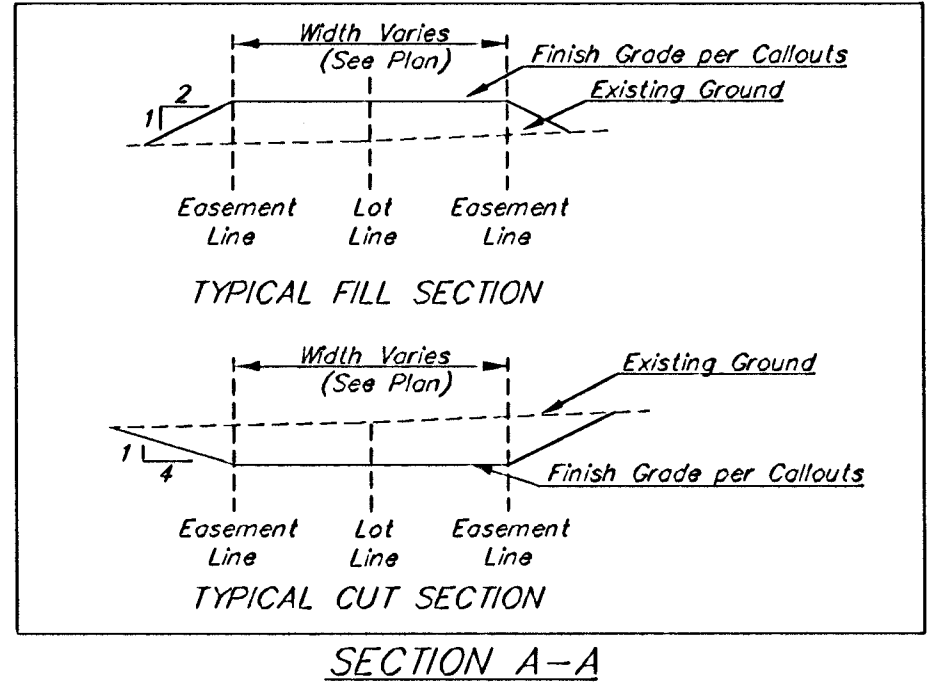
Adjust manhole from Top Elev. = 197.20 to Elev. = 196.70.

CAUTION! Ex. Utils. in Area

CAUTION! Ex. Utils. in Area

Ex. AT&T Pedestal & Line to be removed/abandoned for easement grading. Contractor shall contact Jim Toben, (316)268-2759 two weeks prior to construction to coordinate.

Ex. AT&T Pedestal & Line to be removed/abandoned for easement grading. Contractor shall contact Jim Toben, (316)268-2759 two weeks prior to construction to coordinate.



Area to be graded Proposed Grades

The contractor shall fill and grade the easements as shown to the elevations given on the easement grading plan. All costs for grading shall be incidental to the Easement Grading Bid Item. The contractor shall "straight" grade the easements between the elevations given. Where a callout designates "Match", the contractor will grade to the existing ground elevation. The existing ditch cross sections are shown below.

EARTH WORK TOTALS

	C.Y. Exc.	C.Y. Fill
Easement Grading	592	440

Stockpile excess material on-site at a location determined by the Engineer out of easements and right-of-way. Earthwork quantities are for reference only. All cost associated with easement grading shall be incidental to lump sum bid item "Easement Grading".

1. Compaction of 95% shall be obtained in all street R/Ws, 90% in all other areas.
2. It shall be the Contractor's responsibility to protect the sanitary sewer, storm sewer, and water distribution system during mass grading. Any damage done to these systems by Contractor or subcontractor shall be repaired at no additional cost to the project.
3. All areas disturbed by construction shall be seeded as indicated on cover sheet.

Baughman Shadow Woods Addition - PH. 5
Easement Grading & Erosion Control Plan
Street Improvements

Baughman Company, P.A. 315 Ellis St. Wichita, KS 67111 F3162627711 F3162628149
ENGINEERING | SURVEYING | PLANNING | LANDSCAPE ARCHITECTURE

PROJECT NUMBER 472-84060	DESIGN AEG	DRAWN JEB
REVISIONS:	APPROVED	DATE 6-21-06
	SCALE Noted	SHEET 20 OF 37

Shadow Woods Addition\Phase 5\STR & SWS\ESMTGRADING.dwg 0601-E6467