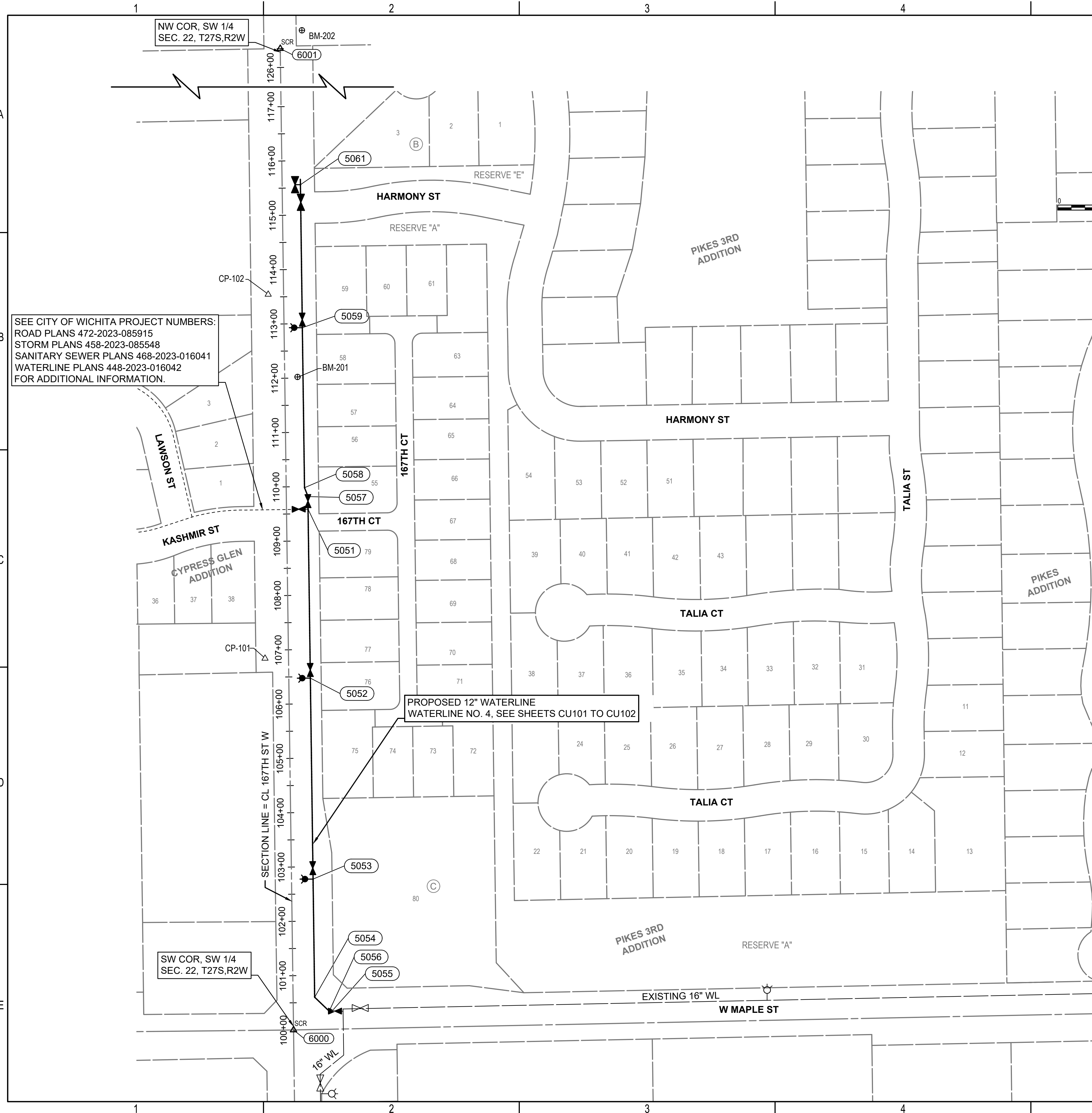


SAVED 10/16/2023 5:07:27 PM BY KURTIS.DEKAT
 PLOTTED 10/17/2023 8:59:53 AM BY KURTIS.DEKAT
 U:\WICHITA-CIVIL\2021\1210975008\PEC\DRAWINGS\210975-008-CU-100.DWG



SEE CITY OF WICHITA PROJECT NUMBERS:
 ROAD PLANS 472-2023-085915
 STORM PLANS 458-2023-085548
 SANITARY SEWER PLANS 468-2023-016041
 WATERLINE PLANS 448-2023-016042
 FOR ADDITIONAL INFORMATION.

LEGEND

	EXISTING WATER MAIN
	PROPOSED WATER MAIN
	EXISTING WATER VALVE
	PROPOSED WATER VALVE
	EXISTING FIRE HYDRANT
	PROPOSED FIRE HYDRANT
	EXISTING BLOW OFF

FITTING TABLE WATERLINE NO. 4

ID	ALIGNMENT	STATION	COORDINATES	DESCRIPTION
5055	WL NO. 4	50+00.0	N: 1,682,467.9390 E: 1,591,889.0088	16" X 12" TAPPING SLEEVE
5056	WL NO. 4	50+05.0	N: 1,682,467.8376 E: 1,591,884.0099	12" 45° BEND
5054	WL NO. 4	50+42.1	N: 1,682,493.5661 E: 1,591,857.2159	12" 45° BEND
5053	WL NO. 4	52+59.6	N: 1,682,711.0122 E: 1,591,854.2797	FIRE HYDRANT ASSEMBLY
5052	WL NO. 4	56+29.6	N: 1,683,080.9997 E: 1,591,849.2837	FIRE HYDRANT ASSEMBLY
5051	WL NO. 4	59+40.6	N: 1,683,391.9098 E: 1,591,845.0863	12" X 8" TEE
5057	WL NO. 4	59+63.9	N: 1,683,415.1967 E: 1,591,845.0863	12" 22.5° BEND
5058	WL NO. 4	59+81.4	N: 1,683,431.5098 E: 1,591,838.5505	12" 22.5° BEND
5059	WL NO. 4	62+76.1	N: 1,683,726.1490 E: 1,591,834.5719	FIRE HYDRANT ASSEMBLY
5060	WL NO. 4	65+19.4	N: 1,683,969.4213 E: 1,591,831.2870	12" ANCHORED VALVE ASSEMBLY
5061	WL NO. 4	65+39.4	N: 1,683,989.4195 E: 1,591,831.0170	2" BLOWOFF ASSEMBLY

(5000) = COORDINATE POINT NO.

CL 167TH STREET W

COORDINATE LIST		
POINT	NORTHING	EASTING
6000	1,682,433.1892	1,591,818.3503
6001	1,685,067.7218	1,591,782.7547

(6000) = COORDINATE POINT NO.

CONTROL SUMMARY
 HORIZONTAL DATUM/COORDINATE SYSTEM: NAD 83 (2011) KANSAS SOUTH ZONE PROJECT
 COORDINATE SYSTEM: (GRID) ON DESCRIBED COORDINATE SYSTEM VERTICAL DATUM: NAVD 88
 SCALE POINT: NORTHING: 0
 EASTING: 0
 COMBINED ADJUSTMENT FACTOR (CAF): GROUND TO GRID=0.99988034
 GRID TO GROUND=1/0.99988034
 DISTANCE UNITS: US SURVEY FEET

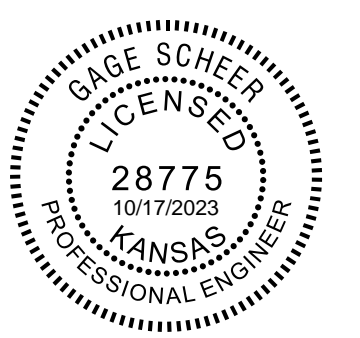
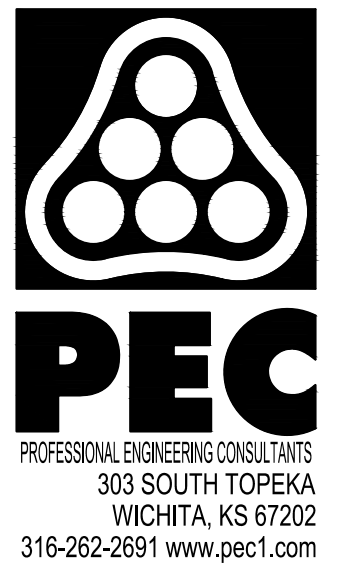
HORIZONTAL CONTROL POINTS

- CP-100 (NOT SHOWN)
 N: 1,683,328.6253 E: 1,590,916.2335
 SET 1/2" REBAR WITH BLUE PEC CP CAP AT SURFACE
- 43.37' SE TO CENTERLINE TOP SANITARY SEWER MANHOLE
 - 46.54' ESE TO SW COR CONCRETE PAD
 - 44.54' SSE TO CENTERLINE TOP SANITARY SEWER MANHOLE
- CP-101
 N: 1,683,117.2541 E: 1,591,765.8789
 SET 1/2" REBAR WITH BLUE PEC CP CAP AT SURFACE
- 43.75' E TO CENTERLINE OF 167TH STREET
 - 17' ESE TO 60D NAIL IN N FACE OF POWER POLE
 - 14.2' NNE TO S FACE OF THE WEST STEEL SIGN POST AT BASE
- CP-102
 N: 1,683,787.3569 E: 1,591,771.7391
 SET 1/2" REBAR WITH BLUE PEC CP CAP AT SURFACE
- 6.55' NE TO S END OF A 18" CMP
 - 11.4' SE TO W FACE OF 55 MPH STEEL SIGN POST AT BASE
 - 19' N TO THE CENTERLINE OF FIELD ENTRANCE TO W

BENCH MARKS

- BM-200 (NOT SHOWN)
 ELEV: 1,429.28 (NAVD 88)
 CHISLED SQUARE CUT IN NE CORNER OF CONCRETE LIFT STATION PAD APPROXIMATELY 839 FEET W OF THE CENTERLINE OF 167TH ST AND 882 FEET NORTH OF MAPLE STREET
- BM-201
 ELEV: 1,431.85 (NAVD 88)
 SET "T" SHAPED FENCE POST FLUSH WITH GROUND 1.5 FEET WEST OF A WOODEN POWER POLE APPROX 1202 FEET NORTH OF THE INTERSECTION OF 167TH STREET AND MAPLE STREET ON THE EAST SIDE OF ROAD
- BM-202
 ELEV: 1,424.24 (NAVD 88)
 SET "T" SHAPED FENCE POST FLUSH WITH GROUND 1.5 FEET WEST OF A WOODEN CORNER FENCE POST APPROXIMATELY 33 FEET NORTH OF A HEDGE ROW TO WEST AND 2667 FEET NORTH OF THE INTERSECTION OF MAPLE STREET AND 167TH STREET ON WEST SIDE OF 167TH STREET

NOTE: WATERLINE VALVES TO BE OPERATED BY CONTRACTOR ONLY IF WATER DEPARTMENT REPRESENTATIVE IS ON SITE.



WATER MAIN IMPROVEMENTS
 12" WATER MAIN ALONG 167TH ST. W
 FROM MAPLE STREET TO HARMONY STREET
 PAUL GUNZELMAN, P.E. - CITY ENGINEER
 CITY OF WICHITA PROJECT NO. 448-2023-021493

JOB NO.	210975-008
DATE	SEPTEMBER 2023
PM	GAS
DESIGNED BY	KJW
DRAWN BY	AJH
CHECKED BY	AMD

WATERLINE BUBBLE MAP

CU100