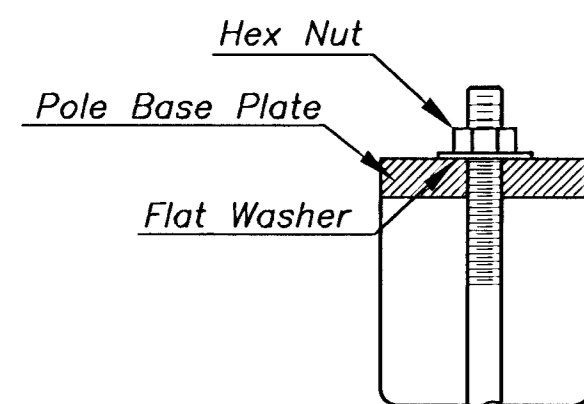
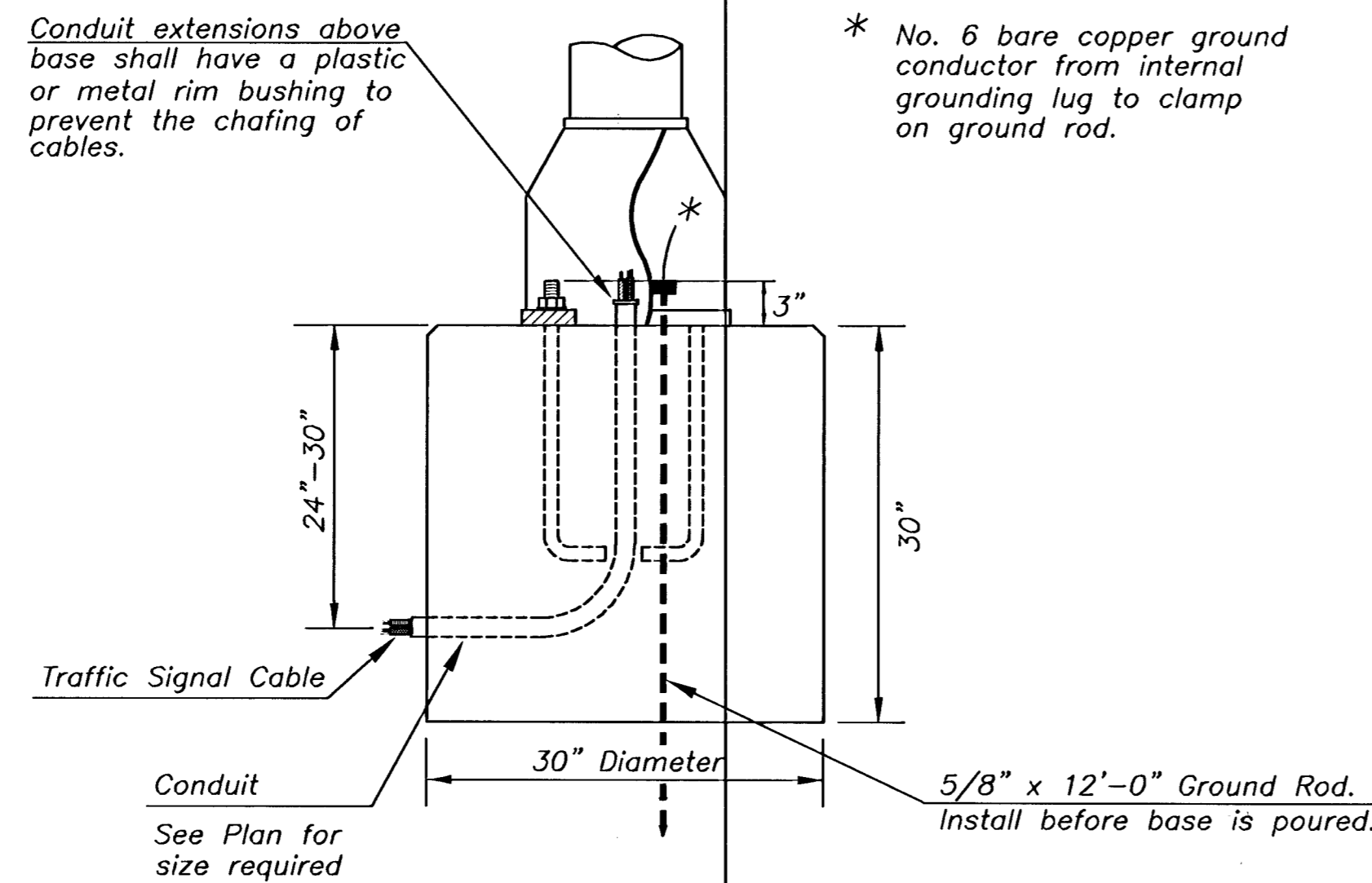
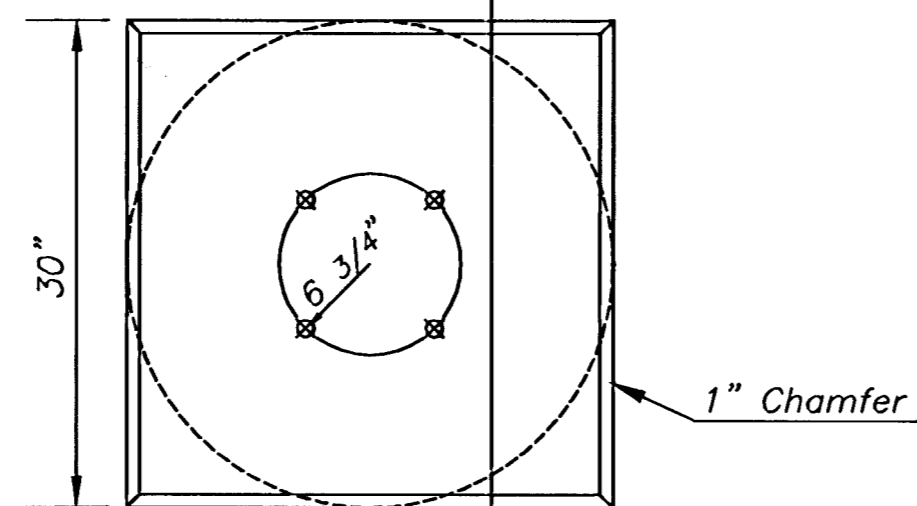


Use Keystone "No-Weld Number 1 Anti-Seize Compound" on all bolts & nuts.

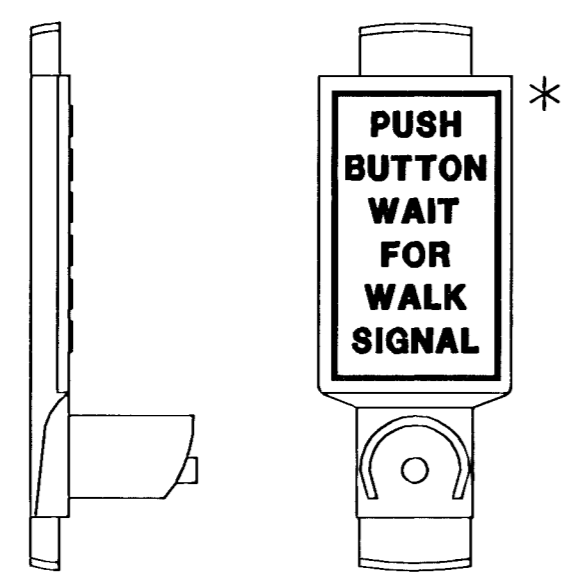


**ANCHOR BOLT
DETAIL**



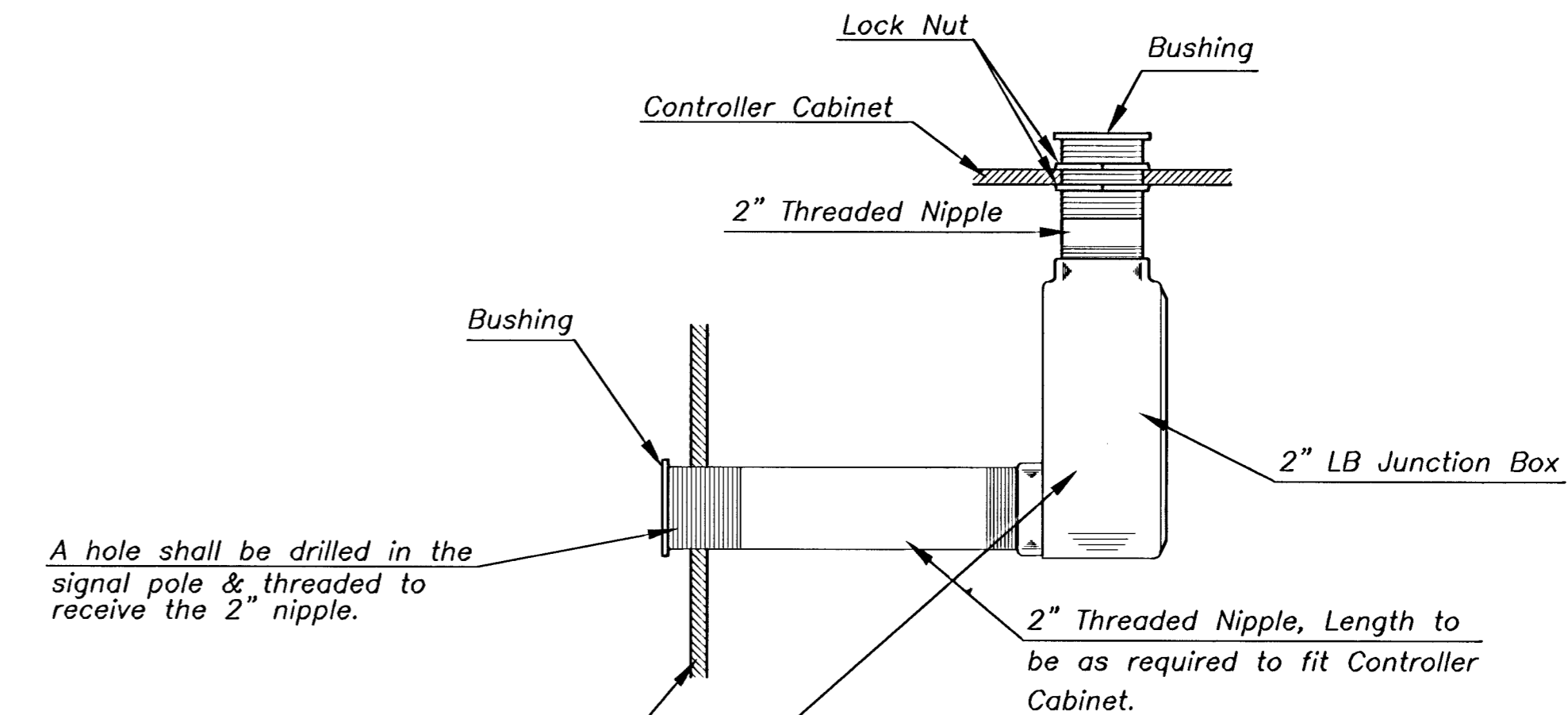
CONCRETE BASE DETAIL

* NOTE: MESSAGE TO BE CAST WITH HOUSING (ONE PIECE)

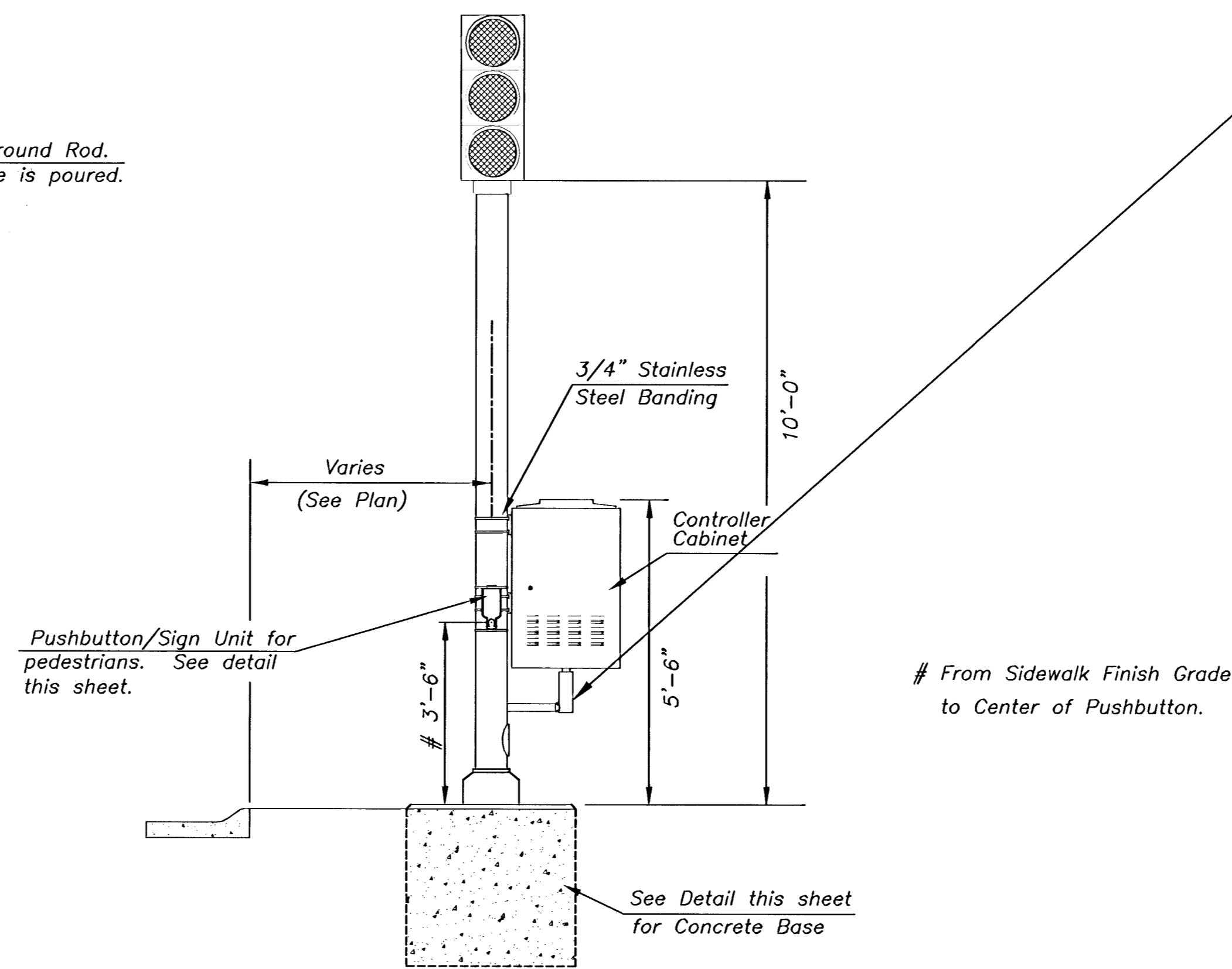


INSTALL PEDESTRIAN PUSHBUTTON UNDERNEATH CORRESPONDING PEDESTRIAN SIGNAL HEAD ON SIDE OF POLE NEAREST CROSSWALK. UNIT SHALL BE FIRMLY ATTACHED TO THE SIDE OF POLE WITH 3/4" STEEL BANDS. SHARP ENDS SHALL BE FOLDED UNDER TO PREVENT INJURY TO PEDESTRIANS.

**PEDESTRIAN PUSHBUTTON/SIGN
UNIT DETAIL**



A hole shall be drilled in the signal pole & threaded to receive the 2" nipple.



From Sidewalk Finish Grade to Center of Pushbutton.

**15' TRAFFIC SIGNAL PEDESTAL
SIDE POLE MOUNTING**

PROJECT DESCRIPTION			
TRAFFIC SIGNAL PEDESTAL & CONCRETE BASE DETAIL SHEET			
PROJECT NUMBER			
872-83991			
DRAWN BY: T.M.	SCALE	REVISED BY:	
DATE: MAY 97	NO SCALE	DATE:	
CITY OF WICHITA DEPARTMENT OF PUBLIC WORKS			
DIVISION OF TRAFFIC ENGINEERING			SHEET 9 OF 9
WM. G. MCKINLEY P.E. TRAFFIC ENGINEER			

58-04-05+05