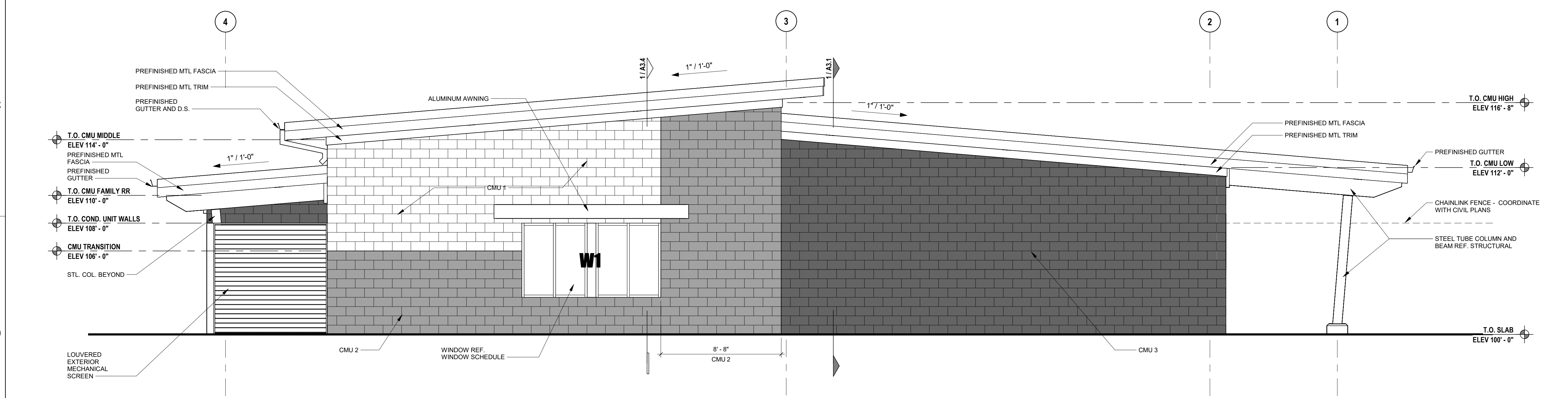


1 SOUTH ELEVATION
1/4" = 1'-0"



2 WEST ELEVATION
1/4" = 1'-0"

ACT	DESCRIPTION	ACT	DESCRIPTION	ACT	DESCRIPTION	ACT	DESCRIPTION
ACT	ACOUSTICAL CEILING TILE SEE REFLECTED CEILING PLAN FOR LAYOUT AND HEIGHT. SEE FINISH SCHEDULE FOR TYPE.	INTERIOR GLAZING	1/4" CLEAR POLISHED PLATE GLASS ON NEOPRENE PADS AND SET IN COMPRESSION SET VINYL GLAZING STRIPS. GLASS TO BE TEMPERED AS REQUIRED.	SHEATHING	EXTERIOR SHEATHING - 5/8" DENS-GLASS UNLESS OTHERWISE NOTED. INSTALLED PER MANUFACTURER'S RECOMMENDATIONS - TAPE JOINTS IF TO BE EXPOSED FOR MORE THAN 7 DAYS OR AS REQUIRED BY MANUFACTURER.	VAPOR BARRIER	STO GOLD COAT 80265 FLUID APPLIED VAPOR PERMEABLE AIR BARRIER - PROVIDE WITH STO GUARD JOINT AND ROUGH OPENING TREATMENT AND OTHER COMPONENTS FOR COMPLETE STO GUARD ASSEMBLY. INSTALL PER MANUFACTURER'S RECOMMENDATIONS
BATT INSULATION	R-19 FIBERGLASS WALL INSULATION	METAL FLASHING	26 GA GALV SHEET METAL WHERE CONCEALED FROM VIEW.	SIDEWALK	4" CONCRETE OVER SAND BED SEE CIVIL PLAN FOR LOCATIONS AND GRADING PLAN FOR HEIGHT	KEY	DESCRIPTION
BRAKE METAL	PRE-FINISHED 24 GA METAL, MFG STANDARD KYNAR 500 FLUOROCARBON STEEL OVER SHEATHING COLOR TO BE SELECTED	METAL STUD FRAMING	18 GA METAL STUDS @ 16" OC MAX - SIZE VARIES OR AS INDICATED BY PARTITION TYPE & STRUCTURAL	STOREFRONT EXTERIOR ALUM	KAWNEER 451-T (OR EQUAL), V.G. CENTER SET, INSIDE GLAZED, THERMALLY BROKEN, CLEAR ANODIZED FRAMING SYSTEM W/ 350 MEDIUM STYLE DOORS & RAILS FOR 1" GLAZING. INSTALL PER MANUFACTURER'S RECOMMENDATIONS. ENSURE END DAMS ARE THOROUGHLY SEALED.	CMU 1 - BURNISHED CMU LIGHT GRAY	
CEDAR SOFFIT	1X6 EV1S WRCLA S3S CLEAR V.G. HEART T&G. PROVIDE A CLEAR SIKKENS FINISH	PERIMETER INSULATION	1 1/2" POLYISO EXTEND 24" VERTICAL AND 24" HORIZONTAL			CMU 2 - SPLIT FACE CMU	
CMU	8" WIDE CMU BLOCK - SEE STRUCTURAL FOR REBAR AND CORE GROUTING LADDER TIES AT 16" OC UNLESS OTHERWISE NOTED. SEE CMU 1, 2, AND 3 FOR COLORS AND FINISH. SEE WALL SECTIONS FOR INTERIOR CMU THICKNESSES	PRE-FINISHED MTL AWNING	PRE-FINISHED METAL AWNING BY WICHITA CANOPY OR APPROVED EQUAL			CMU 3 - BURNISHED CMU DARK GRAY	
		SEALANT	STOREFRONT AND CONCEALED EXTERIOR JOINT SEALANT: SONOLASTIC NP 1 GUN-GRADE POLYURETHANE SEALANT, COLOR TO BE SELECTED.				
		DOWNSPOUT & GUTTER	PRE-FINISHED 20 GA FIRESTONE METAL PRODUCTS UNA-CLAD (OR EQUAL), FINISH TO MATCH STOREFRONT. GUTTER - 6" CONTINUOUS/SEAMLESS.				
		FASCIA	PRE-FINISHED 20 GA FIRESTONE METAL PRODUCTS UNA-CLAD (OR EQUAL), FINISH TO MATCH STOREFRONT				
		GYP BD	5/8" TYPE "X" GYPSUM BOARD UNLESS OTHERWISE NOTED				
		HM DOOR AND FRAME	HOLLOW METAL DOOR AND FRAME SEE DOOR SCHEDULE. PAINT FINISH. COMPLETELY FILL FRAMES W/ BATT INSULATION.				
		INSULATED GLAZING	1" INSULATED GLASS SYSTEM - HIGH PERFORMANCE INSULATING GLASS UNITS WITH LOW-E COATING, TEMPERED. PROVIDE SHOP DRAWINGS AND SAMPLES FOR APPROVAL. COLOR: CLEAR.				

MATERIAL LEGEND



SHELDENARCH.COM
800 E. First Suite 140 Wichita, KS 67202 316.263.4300



SOUTH LAKES SPORTS PARK
WICHITA, KS

Issue:		
100% PLANS		10/16/23

JOB NO.	220008-003
DATE	16 OCTOBER 2023
PM	NLS
DESIGNED BY	BRM
DRAWN BY	BRM
CHECKED BY	DBB

EXTERIOR ELEVATIONS

A2.2

10/10/2023 2:54:08 PM C:\Local Revit Projects\South Lakes Pickleball Complex_bmmitchell_sa.rvt