

CONTROL POINTS

- Pt. #105 N - 1,697,090.5056, E - 1,686,221.3762
3/4" Pipe in center of railroad track, 1/2 mile N of 13th Street North and Greenwich Road, On the W side of Greenwich Road, 30' W of C of Greenwich Road
No ties taken
- Pt. #106 N - 1,697,716.3444, E - 1,686,213.7579
1/2" Rebar in N edge of gravel drive, 28' W of C of Greenwich Road, First gravel drive N of concrete materials company, 3/8 mile S of 21st Street North
11.50' NW, N end of CMP
19.00' SW, S end of CMP
- Pt. #107 N - 1,698,136.5455, E - 1,686,255.0710
3/4" pipe in E gravel shoulder of Greenwich Road. In line with center of creek, ± 1/4 mile S of 21st Street North and Greenwich Road. Near RCB
- Pt. #108 N - 1,698,507.8369, E - 1,686,255.2410
PK Nail in the S edge of asphalt drive on the E side of Greenwich Road, ± 1/4 mile S of 21st Street North and Greenwich Road (at house # 2002)
9.00' W, E edge of Greenwich Road
In line with E edge of E gravel shoulder of Greenwich Road
- Pt. #109 N - 1,698,878.1337, E - 1,686,255.0402
1/2" Rebar in SW corner of gravel drive on E side of Greenwich Road, 2nd gravel drive S of 21st Street North and Greenwich Road
14.00' W, E edge of Greenwich Road
11.60' ESE, Top S end of CMP
- Pt. #110 N - 1,699,217.8832, E - 1,686,255.8360
1/2" Rebar in center of gravel drive 30' E of C of Greenwich Road, First gravel drive S of 21st Street North and Greenwich Road
22.80' SE, Wood gate post
22.00' SW, Wood gate post
- Pt. #111 N - 1,699,720.4774, E - 1,686,293.3722
Found 1/2" Rebar with G/A cap at SE corner of 21st Street North and Greenwich Road, 2.5' SE of SBC vault
No ties taken

- Pt. #112 N - 1,701,059.0693, E - 1,686,222.7874
PK Nail and shiner in South edge of asphalt drive, in line with East edge of East gravel shoulder of Greenwich. South drive of house number 2400 9.0' W to E edge of Greenwich Road
- Pt. #114 N - 1,701,578.9617, E - 1,686,125.6951
PK Nail and shiner on East edge of bike path, in line with fence to the West. South of K-96 highway offramp 3/8 mile North of 21st and Greenwich.
19.0' SSE to 6"x6" wood sign post
23.5' W to E end of S right of way fence
- Pt. #115 N - 1,702,017.5967, E - 1,686,225.0074
PK Nail and shiner in center of bike path, 4' East of guard post, North of K-96 highway offramp. 1/2± mile North of 21st and Greenwich.
6.15' SW face of guard post
3.79' W face of guard post
6.24' NW face of guard post
- Pt. #116 N - 1,702,544.8046, E - 1,686,113.9716
T-post 5' West of sewer manhole on the West side of Greenwich Road. 300± North of K-96 highway offramp at Greenwich Road = BM #214
- Pt. #117 N - 1,699,751.3679, E - 1,685,617.6880
Chiseled "d" on top curb inlet 600' W of Greenwich Road on S side of 21st Street North
No ties taken
- Pt. #118 N - 1,699,734.7729, E - 1,685,160.1302
60d Nail in E side of concrete drive, House # 10801 E 21st Street North
6.20' S, Mailbox
13.60' N, High edge curb
- Pt. #119 N - 1,703,282.2139, E - 1,686,193.4545
#4 bar East gravel shoulder of Greenwich Road on C of 26th St. extended East.
17.5' W C Greenwich Road

SECTION CORNERS

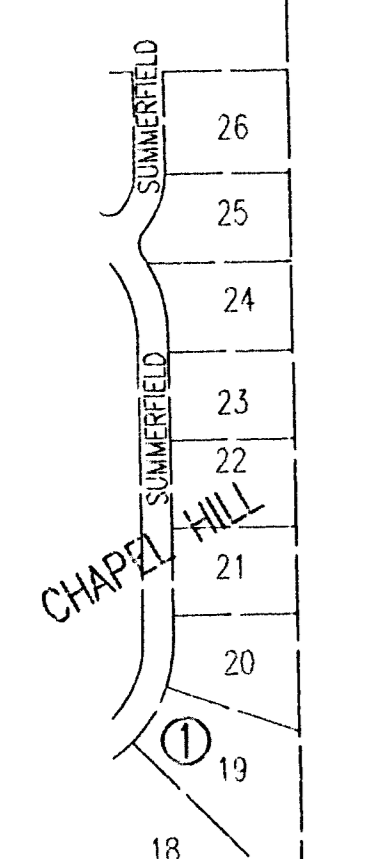
- Pt. #288 N - 1,697,172.5359, E - 1,688,901.6304
Center, Sec. 10, T27S, R2E
Found #4 bar with Savoy cap at surface
66.80' NW, Nail & Shiner in S face of S pole electric line
36.06' S, Nail & Shiner in center of railroad tracks
14.12' SSE, chiseled "+" in N rim of sanitary sewer manhole
70.58' SW, Nail & Shiner in E edge of bike path at N side of railroad tracks
- Pt. #289 N - 1,699,827.9232, E - 1,688,859.1462
S 1/4 Corner Sec. 3, T27S, R2E
Found #5 Bar with Forgy survey cap
In Median 21st Street North, E of K-96 overpass
14.15' N, chiseled "+" on top of curb
23.90' W, chiseled "+" on top of curb
14.28' S, chiseled "+" on top W side of traffic mount
- Pt. #298 N - 1,697,136.8907, E - 1,686,253.0535
W 1/4 Corner, Sec. 10, T27S, R2E
Found railroad spike at surface of asphalt road in center of traveled way (Greenwich Road)
43.56' S, Inside edge of N rail of railroad tracks
37.92' SW, Mag Nail & Shiner in top guard post
35.78' NW, Mag Nail & Shiner in top guard post
51.82' E, Mag Nail & Shiner in top fence corner post
- Pt. #299 N - 1,699,794.6290, E - 1,686,217.4070
SW Corner, Sec. 3, T27S, R2E
Found 3" chiseled "+" in center of concrete intersection (21st Street North & Greenwich Road)
89.44' NE, chiseled "+" on concrete base of traffic lights
113.43' NW, chiseled "+" on concrete base of traffic lights
73.60' SW, chiseled "+" on concrete base of traffic lights
75.93' SE, chiseled "+" on concrete base of traffic lights
- Pt. #300 N - 1,702,439.2575, E - 1,686,184.0892
W 1/4 Corner, Sec. 3, T27S, R2E
Found 3/4" Iron pipe
80.42' SW, 60d nail top North end guard rail post
89.65' SSE, Mag nail top North end guard rail post
19.97' WNW, "+" cut in East rim of sanitary sewer manhole
25± N, line of highline poles

BENCH MARKS

- BM #204
Railroad spike in W face of power pole, E right of way on Greenwich Road, 400' ± S of railroad tracks and E of driveway to concrete materials company.
Elev. = 1365.825
- BM #205 (Datum)
COW brass disc in NW corner of railroad signal base, W side of Greenwich Road, 1/2 mile S of 21st Street North.
Elev. = 1370.59
- BM #206
"T" Post 5' W of N gate post to field entrance, W side of Greenwich Road, 700' ± N of railroad tracks and 500' ± S of RCB culvert.
Elev. = 1365.87
- BM #207
Chiseled "d" on top concrete headwall on NW corner of RCB under Greenwich Road, 1100' ± S of 21st Street North.
Elev. = 1360.065
- BM #208
Railroad spike in W face of 20" Elm on E right of way line of Greenwich Road 800' ± S of 21st Street North.
Elev. = 1367.70
- BM #209
Chiseled "d" on NW corner of traffic signal base, at SW corner of Greenwich Road & 21st Street North
Elev. = 1363.54

- BM #210
Chiseled "d" on East end nose concrete curb median West side of Greenwich Road North of 21st 800± at Target store entrance.
Elev. = 1368.46
- BM #211
West end bolt in power pole ±1' above ground at private drive 2400. North Greenwich Road on East side road and south side of driveway.
Elev. = 1371.21
- BM #213
Chiseled "d" on North end RCP. Under bike path East side of Greenwich and South side of K-96 overpass.
Elev. = 1368.96
- BM #214
T-post 5' West of sewer manhole. 300' North of K-96 and 60' West of Greenwich Road.
Elev. = 1369.78
- BM #217
C.O.W. brass disc, on top South curb of 26th St. North. West of Greenwich Road at fire hydrant.
Elev. = 1378.94

DSNR: MDK OPER: JAC SCALE: 1"=200.00
 C: 2004\04219\002\1\control 05-24-2005 03:22:21 pm



No.	Revision	By	Date
MAIN 16 OF THE FOUR MILE CREEK SEWER HORIZONTAL AND VERTICAL CONTROL JAMES L. ARMOUR, P.E. - CITY ENGINEER CITY OF WICHITA PROJECT NO. 468-83803 Professional Engineering Consultants, P.A. 303 S. TOPEKA • WICHITA, KANSAS 67202 316-262-2691 • FAX 316-262-3003			
Designed by	MDK	Job No.	04219-002
Drawn by	CSL	Date	MAY 2004
			Sht. 3 of 26