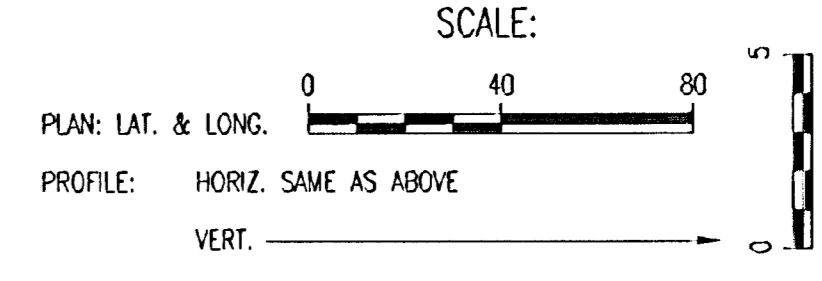
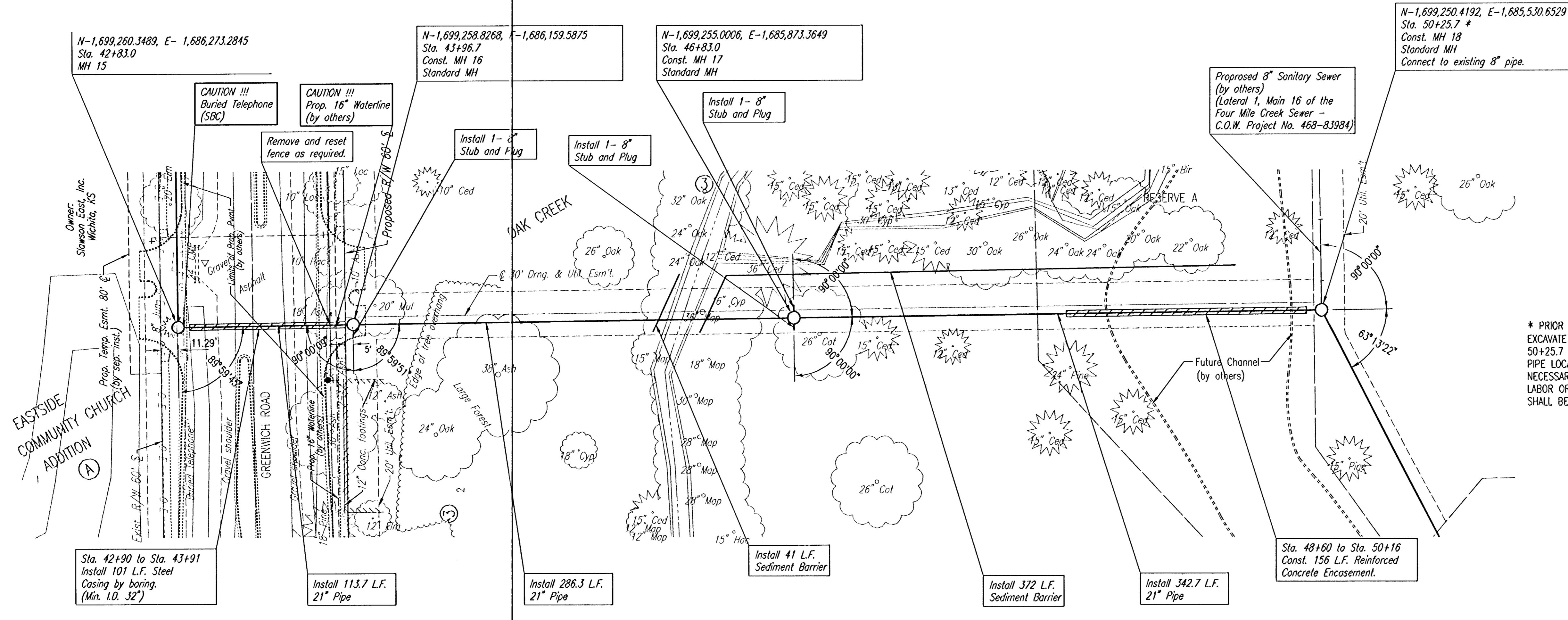


PLAN	CHECKED	DATE
	CHECKED	

PROFILE	CHECKED	DATE
	CHECKED	

DSNR: MDK OPER: CSL SCALE: 1"=40.00
 Q:\2004\04219\002\SSPP07 05-24-2005 06:05:36 pm

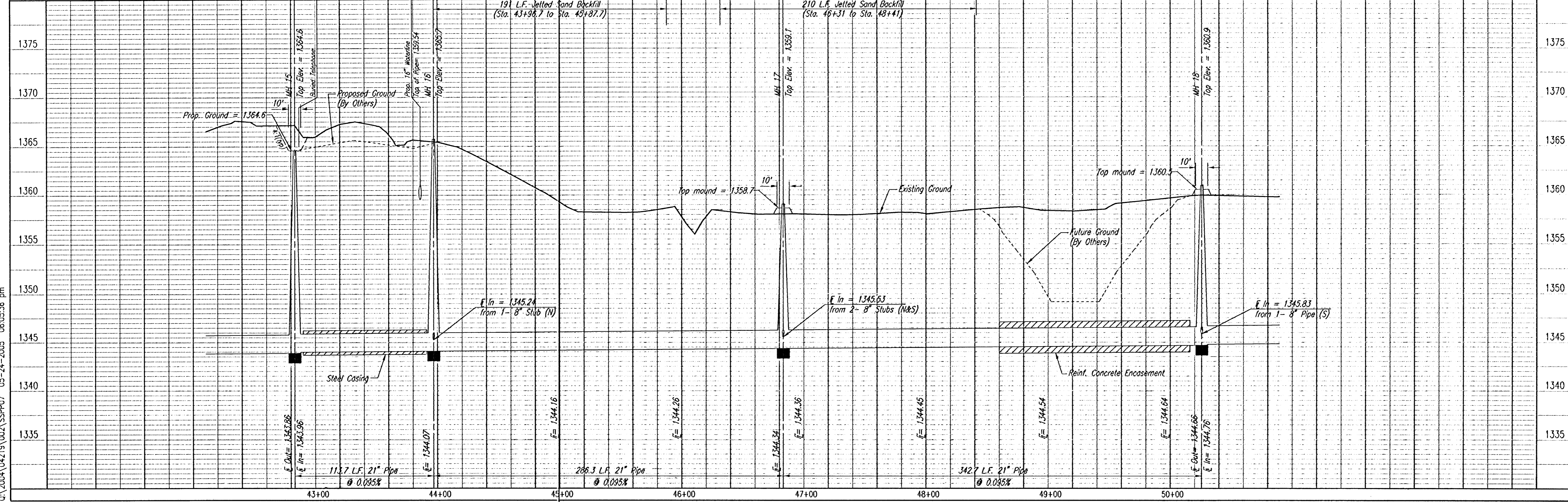


* PRIOR TO BEGINNING CONSTRUCTION, THE CONTRACTOR SHALL EXCAVATE THE EXISTING 8" PVC PIPE AT SANITARY SEWER STATION 50+25.7 TO VERIFY ITS HORIZONTAL AND VERTICAL LOCATION. THE PIPE LOCATION SHALL BE REPORTED TO THE ENGINEER SO THAT ANY NECESSARY PLAN MODIFICATIONS CAN BE MADE. ANY ADDITIONAL LABOR OR MATERIALS NECESSARY TO COMPLETE THE CONNECTION SHALL BE CONSIDERED SUBSIDIARY TO THE PROJECT.



SANITARY SEWER LINE NO. 1

NOTE: REMOVE AND RESET FENCE AS REQUIRED. TRIM OR REMOVE TREES AS NECESSARY IN ACCORDANCE WITH GENERAL NOTE NO. 11.



MAIN 16 OF THE
 FOUR MILE CREEK SEWER
 SANITARY SEWER LINE NO. 1

Professional Engineering Consultants, P.A.
 303 S. TOPEKA - WICHITA, KANSAS 67202
 316-262-2691 • FAX 316-262-3003
 Job No. 35-04219-002 Date MAY 2004
 Designed By MDK
 Drawn by JCA, TRD

JAMES L. ARMOUR, P.E. - CITY ENGINEER
 CITY OF WICHITA PROJECT NO. 468-8303