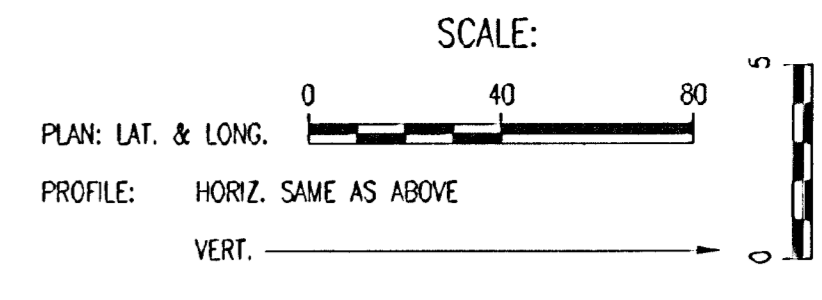
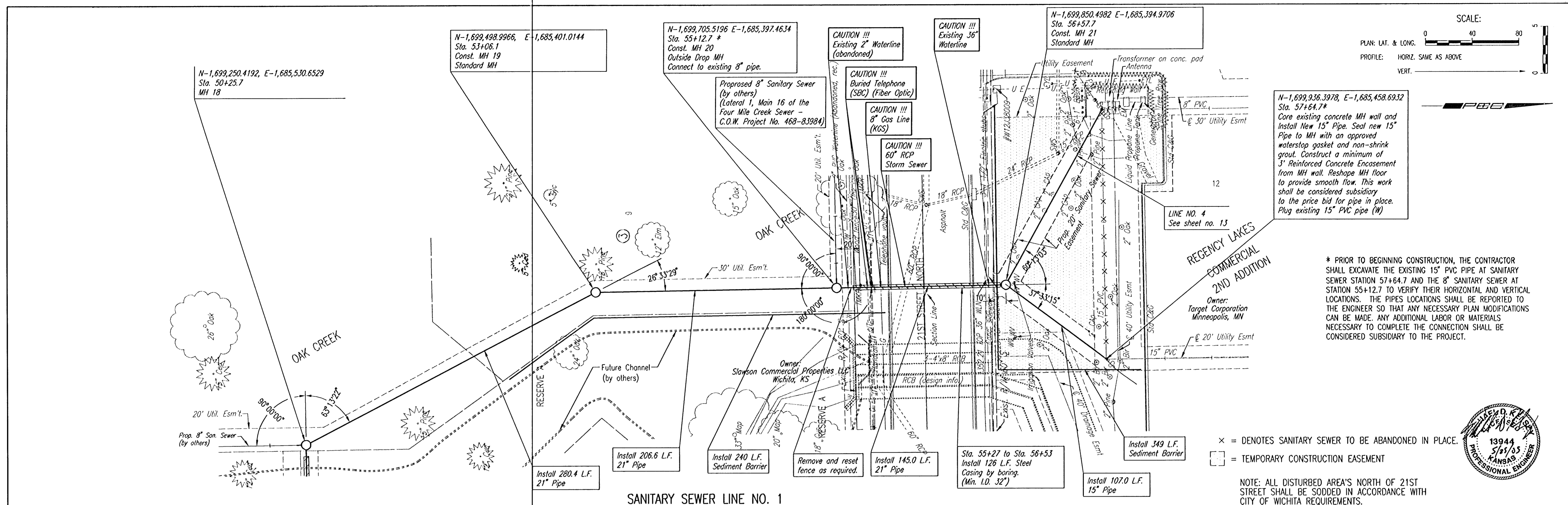


PLAN	CHECKED	DATE
	CHECKED	

PROFILE	CHECKED	DATE
	CHECKED	

DSMR: MOK OPER. CSJ SCALE: 1"=40.00
 Q: 2004-04215\002\SSPPUB 05-24-2005 06:06:46 pm



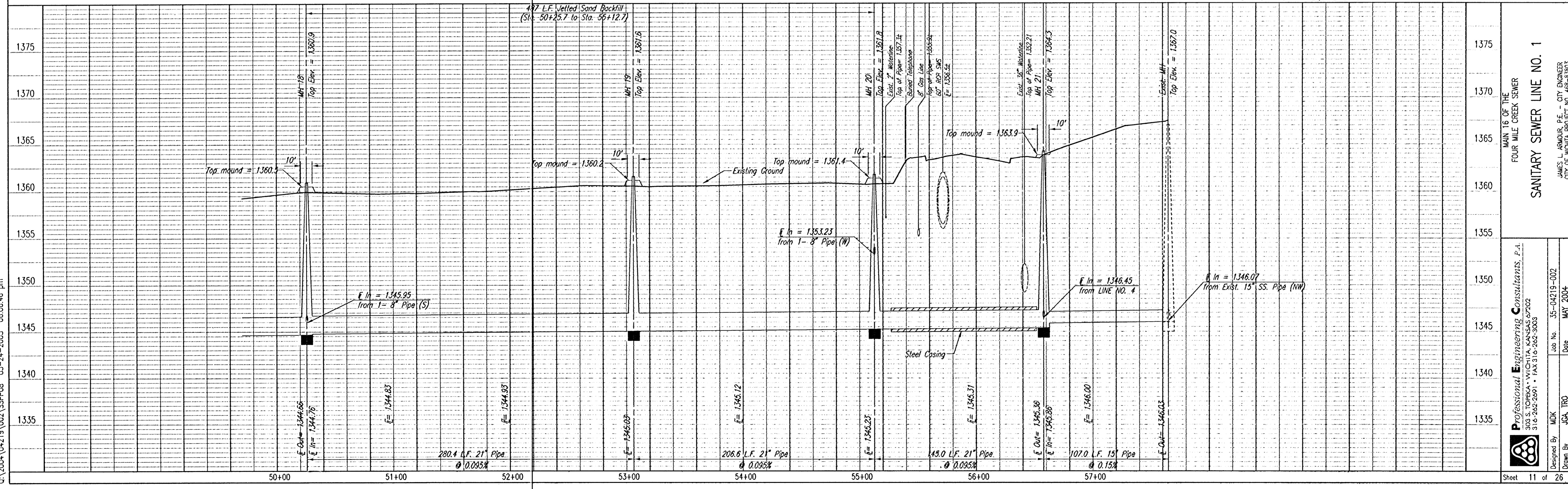
N-1,699,936.3978, E-1,685,458.6932
 Sta. 57+64.7*
 Core existing concrete MH wall and install new 15" pipe. Seal new 15" pipe to MH with an approved waterstop gasket and non-shrink grout. Construct a minimum of 3" Reinforced Concrete Encasement from MH wall. Reshape MH floor to provide smooth flow. This work shall be considered subsidiary to the price bid for pipe in place. Plug existing 15" PVC pipe (W)

* PRIOR TO BEGINNING CONSTRUCTION, THE CONTRACTOR SHALL EXCAVATE THE EXISTING 15" PVC PIPE AT SANITARY SEWER STATION 57+64.7 AND THE 8" SANITARY SEWER AT STATION 55+12.7 TO VERIFY THEIR HORIZONTAL AND VERTICAL LOCATIONS. THE PIPES LOCATIONS SHALL BE REPORTED TO THE ENGINEER SO THAT ANY NECESSARY PLAN MODIFICATIONS CAN BE MADE. ANY ADDITIONAL LABOR OR MATERIALS NECESSARY TO COMPLETE THE CONNECTION SHALL BE CONSIDERED SUBSIDIARY TO THE PROJECT.

x = DENOTES SANITARY SEWER TO BE ABANDONED IN PLACE.
 □ = TEMPORARY CONSTRUCTION EASEMENT



NOTE: ALL DISTURBED AREA'S NORTH OF 21ST STREET SHALL BE SODDED IN ACCORDANCE WITH CITY OF WICHITA REQUIREMENTS.



MAIN 16 OF THE
 FOUR MILE CREEK SEWER
SANITARY SEWER LINE NO. 1

Professional Engineering Consultants, P.A.
 303 S. TOPEKA • WICHITA, KANSAS 67202
 316-262-2691 • FAX 316-262-3003

Designed By: MDK
 Drawn By: JCA, TRO
 Job No: 35-04219-002
 Date: MAY 2004

James L. Armour, P.E. - CITY ENGINEER
 CITY OF WICHITA PROJECT NO. 468-83983