

REMOVE GRAVEL DRIVE, CONCRETE PADS, TRANSFORMER, GENERATOR, PROPANE TANK, ELECTRICAL METER, ELECTRIC CONTROL PANELS, AND ANTENNA. SEE DETAIL, SHEET 15

LIQUID PROPANE TANK AND LINE TO BE ABANDONED BY GAS COMPANY

ABANDON 15" PVC SANITARY SEWER IN PLACE. SEE SHEET 13

REMOVE CURB AND GUTTER

ABANDON 2-6" PVC PIPES IN PLACE. SEE SHEET 15

6" FORCE MAIN (TO BE ABANDONED IN PLACE) SEE SHEET 16 FOR LIMITS

REMOVE 15" RCP

CONSTRUCT MASONRY PLUG IN 15" RCP

EXISTING VALVE VAULT TO BE ABANDONED IN PLACE. SEE DETAIL, SHEET 15

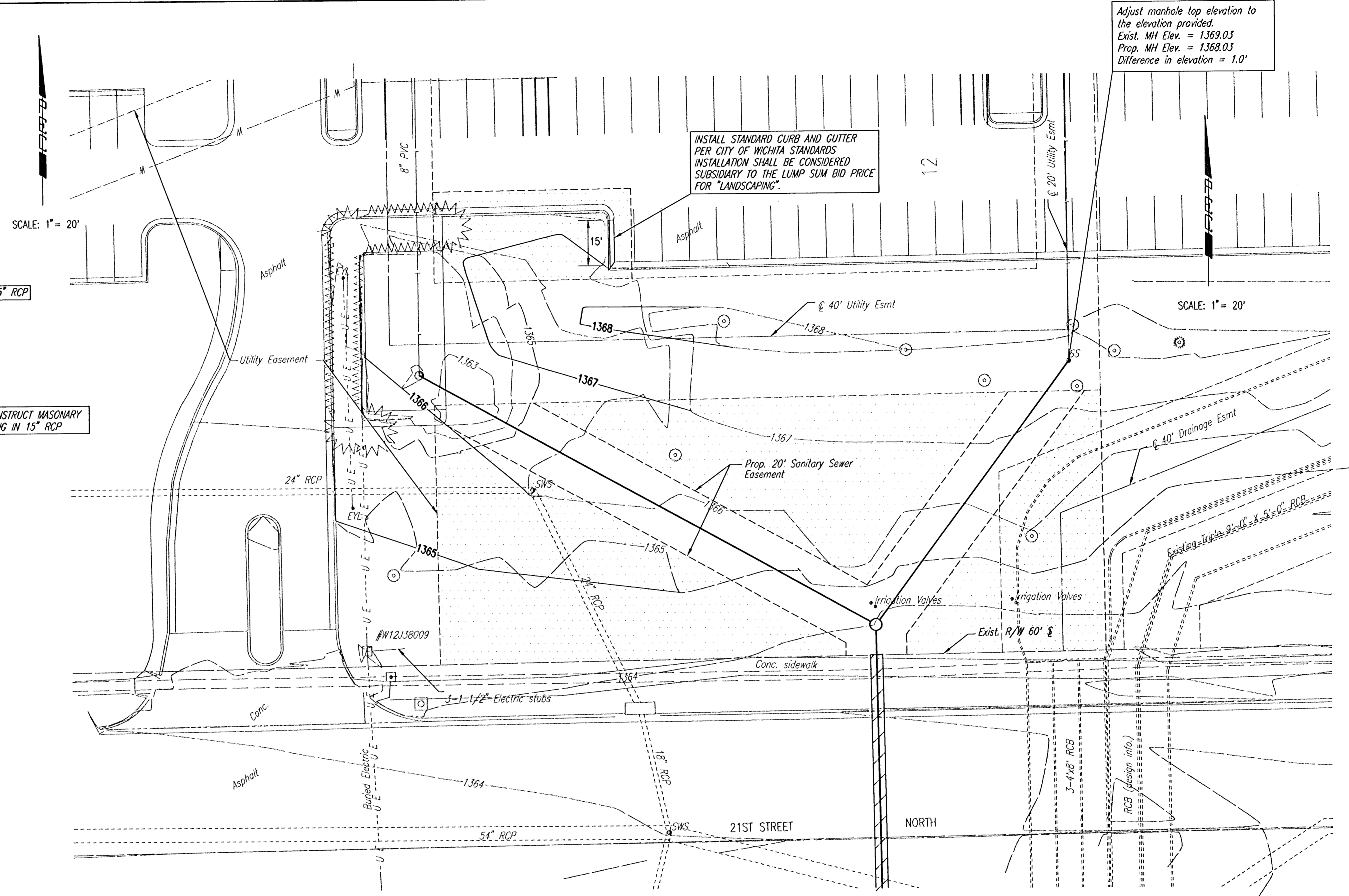
EXISTING WET WELL TO BE CONVERTED TO MH. PUMP STATION TO BE ABANDONED. SEE DETAIL, SHEET 15

PUMP STATION DEMOLITION

Adjust manhole top elevation to the elevation provided.
 Exist. MH Elev. = 1369.03
 Prop. MH Elev. = 1368.03
 Difference in elevation = 1.0'

SCALE: 1" = 20'

SCALE: 1" = 20'



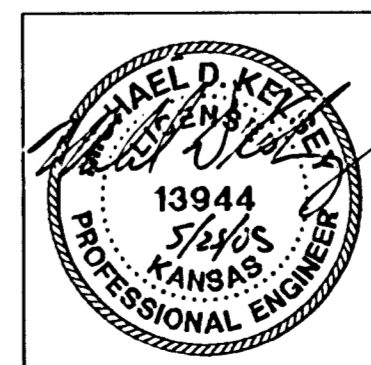
GRADING PLAN AND PROPOSED PAVING

LEGEND

- LIMITS OF DEMOLITION
- PROPOSED TEMPORARY CONSTRUCTION EASEMENT

NOTE: THE CONTRACTOR SHALL COORDINATE ALL LANDSCAPING AND IRRIGATION REPLACEMENT ON THE TARGET PROPERTY NORTH OF 21ST STREET NORTH WITH MARK MAINY OF TREE TOP NURSERY (686-7491). THE CONTRACTOR SHALL NOTIFY MR. MAINY 30 DAYS PRIOR TO MOVING ANY TREES. LANDSCAPING ITEMS SHALL INCLUDE BUT NOT BE LIMITED TO THE FOLLOWING: TREE SPACING OF ALL TREES IN CONFLICT WITH GRADING AND SANITARY SEWER CONSTRUCTION, REMOVAL AND REPLACEMENT OF ALL PORTIONS OF IRRIGATION SYSTEM WITHIN PERMANENT AND TEMPORARY EASEMENTS, INSTALLATION OF ADDITIONAL IRRIGATION SYSTEM(S) TO PROVIDE IRRIGATION TO AREAS OF THE ABANDONED PUMP STATION, GRADING, AND SODDING. ALL AREAS DISTURBED BY THE CONTRACTOR WITHIN REGENCY LAKES COMMERCIAL 2ND ADDITION SHALL BE SODDED IN KIND.

DSNR: MDK OPER: JAC SCALE: 1"=20.00
 0:12004\04219\002\ESchemo 05-24-2005 03:33:34 pm



No.	Revision	By	Date
MAIN 16 OF THE FOUR MILE CREEK SEWER PUMP STATION DEMOLITION AND GRADING PLAN JAMES L. ARMOUR, P.E. - CITY ENGINEER CITY OF WICHITA PROJECT NO. 468-83803			
Professional Engineering Consultants, P.A. 303 S. TOPEKA • WICHITA, KANSAS 67202 316-262-2691 • FAX 316-262-3003			
Designed by	MDK	Job No.	04219-002
Drawn by	JGA, CSL	Date	MAY 2004
			SHT. 14 OF 26