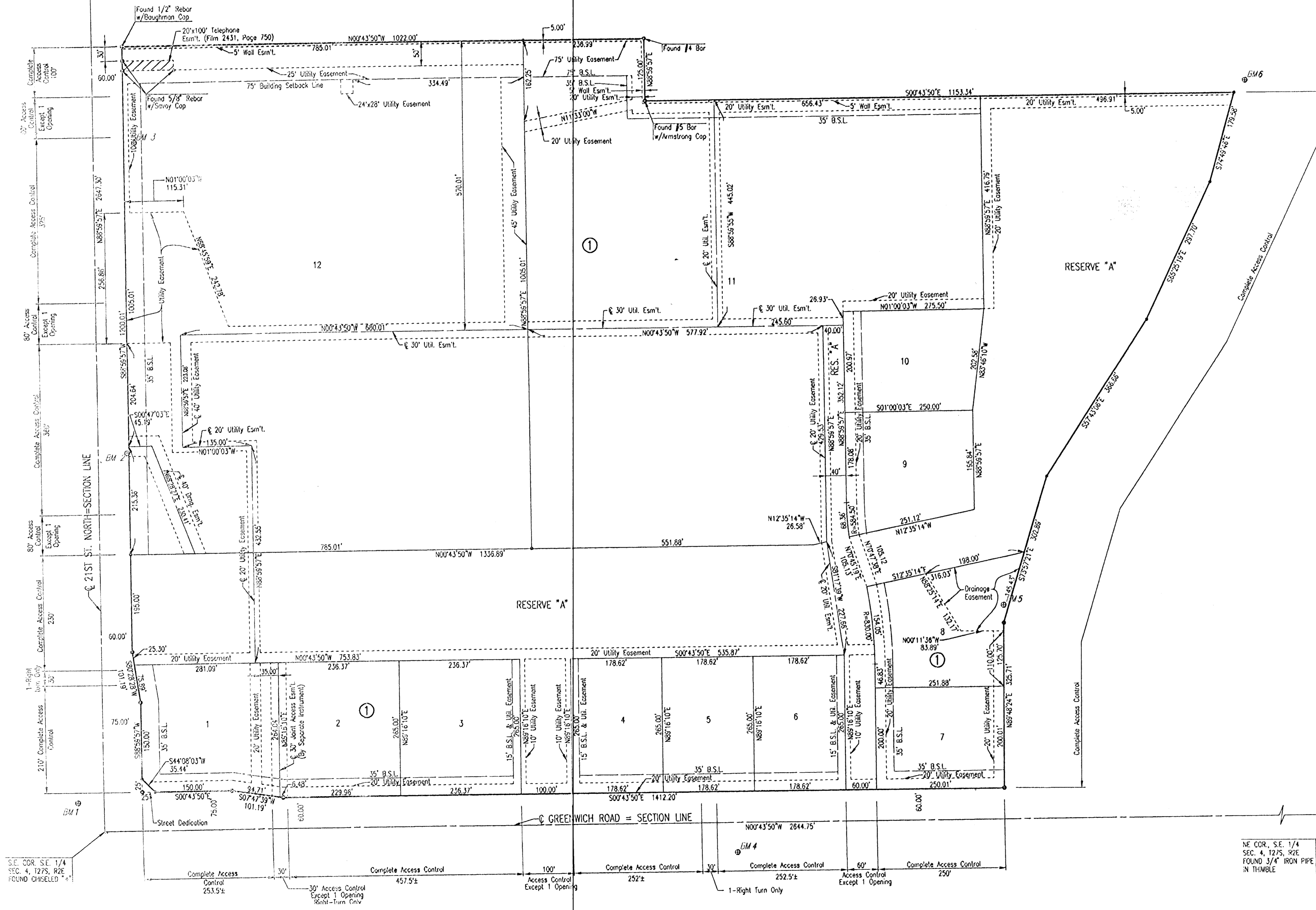


# REGENCY LAKES COMMERCIAL 2ND ADDITION

## AN ADDITION TO WICHITA, SEDGWICK COUNTY, KANSAS

S.W. COR. SE 1/4  
SEC. 4, T27S, R2E  
FOUND 1/2" REBAR  
WITH 1/4" EC CAP

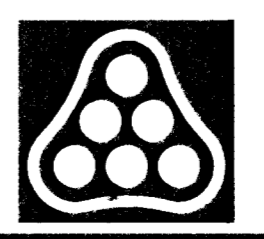
N.W. COR. S.E. 1/4  
SEC. 4, T27S, R2E



SCALE: 1"=100'

DSNR: MDK OPER: JAC SCALE: 1"=100' 05/24/2005 03:01:46 pm

NE COR., S.E. 1/4  
SEC. 4, T27S, R2E  
FOUND 3/4" IRON PIPE  
IN THIMBLE



MAIN 16 OF THE FOUR MILE CREEK SEWER  PLAT  JAMES L. ARMOUR, P.E. - CITY ENGINEER CITY OF WICHITA PROJECT NO. 468-83803	Professional Engineering Consultants, P.A. 303 S. TOPEKA • WICHITA, KANSAS 67202 316-262-2691 • FAX 316-262-3003
No. _____ Revision _____ By _____ Date _____	Job No. 04219-002 Date MAY 2004 Sht. 17 of 26
Designed by MDK Drawn by _____	Job No. 04219-002 Date MAY 2004 Sht. 17 of 26