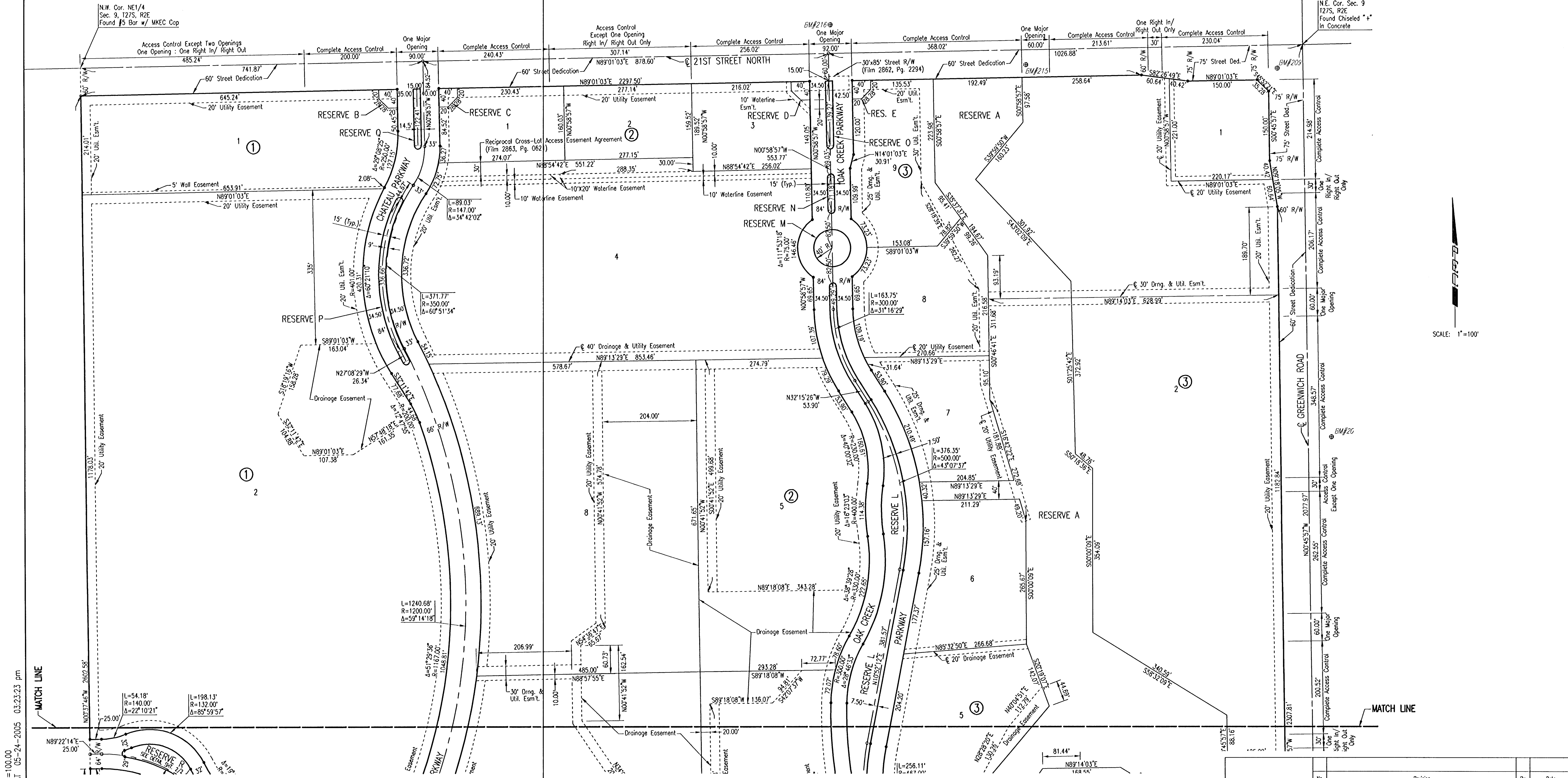


# OAK CREEK

## AN ADDITION TO WICHITA, SEDGWICK COUNTY, KANSAS



DSWR: MDK OPER: JAC SCALE: 1"=100.00  
 Q: 2004-04215\002\Oak Creek PLAT 05-24-2005 03:23:23 pm

	Revision	By	Date
MAIN 16 OF THE FOUR MILE CREEK SEWER PLAT JAMES L. ARMOUR, P.E. - CITY ENGINEER CITY OF WICHITA PROJECT NO. 468-83803			
<b>Professional Engineering Consultants, P.A.</b> 303 S. TOPEKA • WICHITA, KANSAS 67202 316-262-2691 • FAX 316-262-3303			
Designed by	MDK	Job No.	04219-002
Drawn by		Date	MAY 2004
			Sht. 18 of 26

