

GENERAL NOTES

1. UNLESS SHOWN OR STATED OTHERWISE ON THESE DRAWINGS, MATERIALS AND CONSTRUCTION SHALL BE IN ACCORDANCE WITH CITY OF WICHITA CONCRETE PAVEMENT AND ASPHALTIC CONCRETE PAVEMENT SPECIFICATIONS.

2. THE CONTRACTOR SHALL BE RESPONSIBLE FOR PRESERVING PROPERTY IRONS. THE CONTRACTOR WILL BE REQUIRED TO RE-ESTABLISH ANY PROPERTY IRONS WHICH ARE DAMAGED OR DESTROYED BY HIS CONSTRUCTION OPERATIONS. SUCH IRONS SHALL BE RE-ESTABLISHED BY A LICENSED LAND SURVEYOR IN ACCORDANCE WITH STATE LAWS.

3. EXISTING UTILITIES AND THEIR LOCATIONS, AS SHOWN ON THE PLANS REPRESENT THE BEST INFORMATION OBTAINABLE FOR DESIGN. LOCATION INFORMATION HAS BEEN OBTAINED FROM THE VARIOUS UTILITY COMPANIES AND IS EITHER FROM COMPANY RECORD DRAWINGS OR COMPANY PROVIDED FIELD LOCATIONS. THE PLAN LOCATIONS SHOWN ARE NOT GUARANTEED. ADDITIONAL EXISTING UTILITIES MAY ALSO BE ENCOUNTERED.

4. CONTRACTOR WILL BE REQUIRED TO PROVIDE A MINIMUM ADVANCE NOTICE OF FORTY-EIGHT (48) HOURS TO UTILITY COMPANIES PRIOR TO STARTING ANY EXCAVATION AS FOLLOWS:

KANSAS ONE-CALL 1-800-344-7233
OR 687-2470 (LOCAL WCHITA)

THE CONTRACTOR MUST NOTIFY THE FOLLOWING IN CASE OF AN EMERGENCY:

COX COMMUNICATION 263-0661
WESTAR ENERGY 261-6512
SBC 1-800-870-8390
CITY OF WICHITA WATER & SEWER 262-6000
COOPERATIVE REFINERY PIPELINE 1-800-982-4112
KANSAS GAS SERVICE 832-3101

5. RUBBLE FROM THE REMOVAL OF MISCELLANEOUS STRUCTURES AND EXCESS EXCAVATION WHICH IS TO BE WASTED SHALL BE DISPOSED OF ON SITES TO BE PROVIDED BY THE CONTRACTOR. THESE SITES SHALL BE APPROVED BY THE ENGINEER AS TO STABILITY, APPEARANCE AND SITE LOCATION. LOCATIONS THAT, IN THE OPINION OF THE ENGINEER, WILL LEAVE AN UNSIGHTLY APPEARANCE WILL NOT BE APPROVED. ALL DISPOSAL SITES MUST BE APPROVED BY THE KANSAS DEPARTMENT OF HEALTH AND ENVIRONMENT. MATERIAL EITHER STOCKPILED OR DISPOSED OF IN A FLOOD PLAIN WOULD REQUIRE A KANSAS STATE BOARD OF AGRICULTURE PERMIT. ANY MATERIAL DUMPED IN WATERS OF THE UNITED STATES OR WETLANDS IS SUBJECT TO U.S. CORPS OF ENGINEERS PERMITTING REGULATIONS. ANY MATERIAL BURIED OR STOCKPILED BEYOND APPROVED CONSTRUCTION LIMITS WOULD REQUIRE ADDITIONAL ARCHAEOLOGICAL INVESTIGATIONS UNLESS BURIED IN A PREVIOUSLY APPROVED BORROW LOCATION.

6. ANY TREE THAT MUST HAVE BRANCHES REMOVED SHALL BE TRIMMED WITH SHARP INSTRUMENT/TOOL THAT IS INTENDED FOR SUCH OPERATIONS. KNOCKING BRANCHES OFF WITH A BACKHOE OR OTHER SIMILAR MACHINES IS NOT ACCEPTABLE! REFER TO DETAIL, SHEET 3 FOR TRIMMING PROCEDURE.

7. A 6" LAYER OF TOPSOIL IS TO BE PLACED OVER ALL AREAS WHERE THE VIRGIN GRADE NO LONGER EXISTS WITH THE EXCEPTION OF PAVED AREAS. THIS INCLUDES BERMS, SWALES AND SLOPES. NOTE: THE FINISHED GRADE INDICATES THE SURFACE ELEVATION AFTER THE 6" LAYER OF TOPSOIL HAS BEEN PLACED.

8. ALIGNMENT OF SIDEWALK TO BE APPROVED BY MKEC PRIOR TO CONSTRUCTION.

9. COMPACTED FILL IS AVAILABLE ON SITE (LOT 40, BLOCK 1).

10. TREES AND NATIVE PRAIRIE PASTURE ARE AN IMPORTANT ASSET TO THE DEVELOPER. EVERY EFFORT SHOULD BE MADE TO PRESERVE EACH AND EVERY TREE AND PASTURE SPACE (UNLESS NOTED FOR REMOVAL) AS DIRECTED IN THESE PLANS & NOTES.

11. THE NATIVE PRAIRIE PASTURE SHALL BE IMPACTED AS LITTLE AS POSSIBLE. CONSTRUCTION EQUIPMENT & STORED MATERIALS SHALL REMAIN OUT OF AREAS NOTED TO BE PRESERVED. CONSTRUCTION TRAFFIC SHALL BE LIMITED TO A CONFINED SPACE WITHIN THE IMMEDIATE CONSTRUCTION AREA. VEHICLES SHALL NOT RANDOMLY CROSS PASTURE SPACES BUT RATHER STAY ON PREDEFINED ROUTES/HAUL ROADS THAT THE OWNERS REPRESENTATIVE AGREES TO. IT IS NOT THE INTENTION OF THESE REQUIREMENTS TO MAKE THE PROJECT MORE DIFFICULT BUT RATHER TO THOUGHTFULLY PLAN HOW TO GET THE PROJECT BUILT WITHOUT DESTROYING THE AESTHETIC QUALITIES OF THE PROPERTY.

12. EQUIPMENT AND CONSTRUCTION MATERIALS SHALL REMAIN OUT OF AND AWAY FROM TREE DRIP LINES SO AS TO NOT COMPACT THE ROOT ZONE OR DAMAGE THE TREE. CHEMICAL SPILL DAMAGE SHALL BE PREVENTED BY FILLING GAS TANKS, CLEANING TOOLS & REPAIRING EQUIPMENT WELL OUTSIDE TREE PROTECTED ROOT ZONES. MIXING TRUCKS SHALL BE RINSED OUT OFF SITE. WHERE IT OCCURS THAT A CONSTRUCTION ROUTE OR A PROPOSED IMPROVEMENT OCCURS WITHIN A TREE'S PROTECTED ROOT ZONE, IT MAY BE NECESSARY, DEPENDENT UPON THE TYPE OF CONSTRUCTION AND EQUIPMENT USED, TO INSTALL A ROOT PROTECTION BRIDGE OR APPROVED EQUIVALENT. THIS MAY BE DETERMINED IN THE FIELD AT THE DISCRETION OF THE LANDSCAPE ARCHITECT (REFER TO DETAIL SHEET 3). IT MAY BE NECESSARY TO BRING CONCRETE IN WITH SMALLER EQUIPMENT IN AREAS SUCH AS THE PENINSULA WHERE LARGER TRUCKS WOULD CAUSE DAMAGE.

13. EROSION CONTROL IS TO MEET ALL FEDERAL, STATE, COUNTY & LOCAL CODE STANDARDS.

14. CONTRACTOR SHALL SEED ALL DISTURBED AREAS WITH AN ANNUAL RYE GRASS AT A RATE OF 250LBS./ACRE.

15. ALL SEED SHALL BE DISTRIBUTED WITH AN ACCEPTABLE DRILL INTENDED FOR SUCH OPERATIONS, OR OTHER EQUIPMENT APPROVED BY THE OWNER'S REPRESENTATIVE. SEEDING DEPTH SHALL BE 1/4".

16. ALL SEEDED AREAS SHALL BE IMMEDIATELY MULCHED W/PRAIRIE HAY AT 2 TONS/ACRE. ANCHOR MULCH BY CRIMPING INTO TOPSOIL WITH SUITABLE MECHANICAL EQUIPMENT.

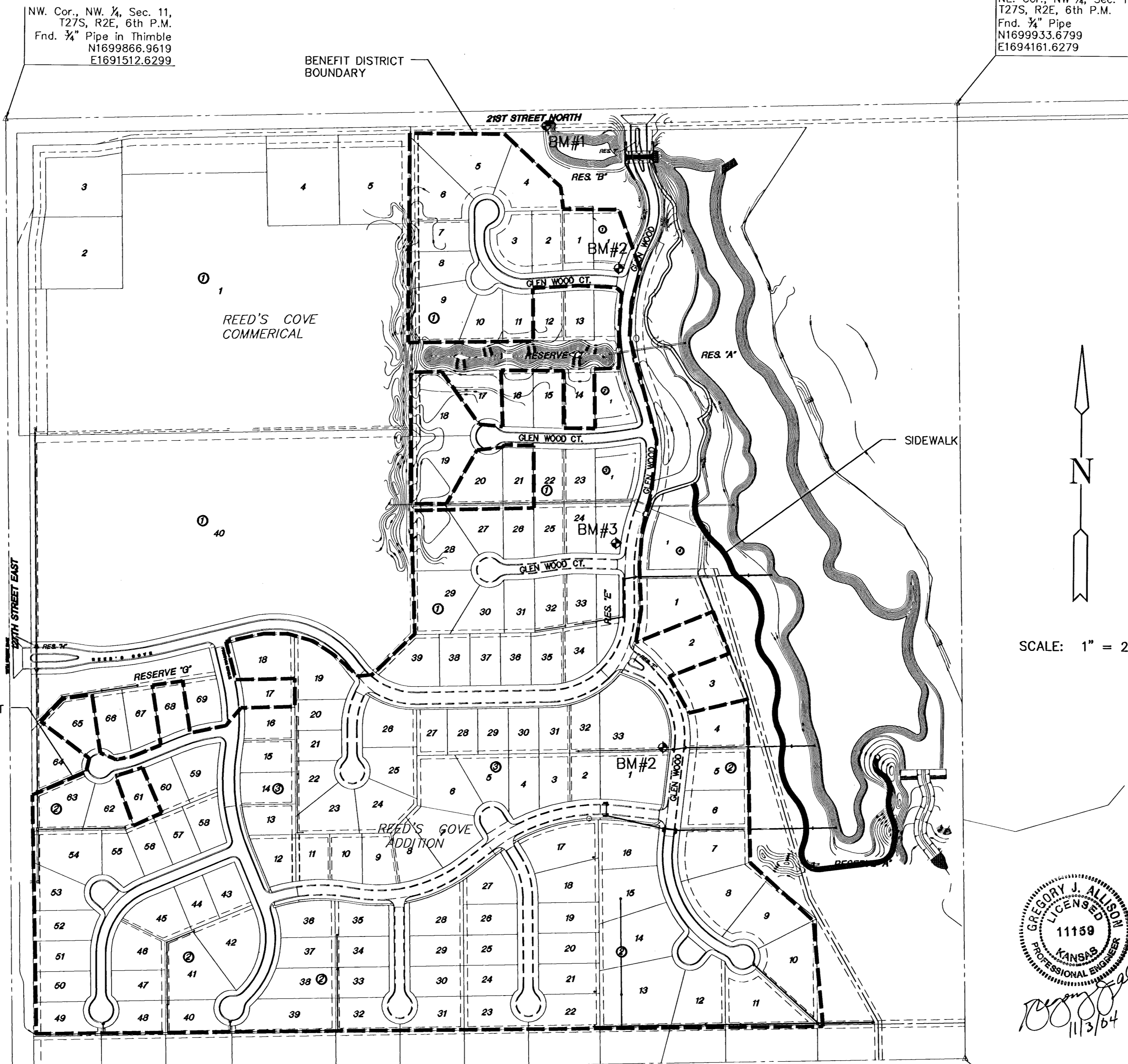
PAVING PLANS FOR SOUTH SIDEWALK REED'S COVE ADDITION

AN ADDITION TO THE CITY OF WICHITA
SEDGWICK COUNTY, KANSAS

PROJECT NO. 472-84110

JIM ARMOUR, P.E., ACTING CITY ENGINEER

OCA - 765909

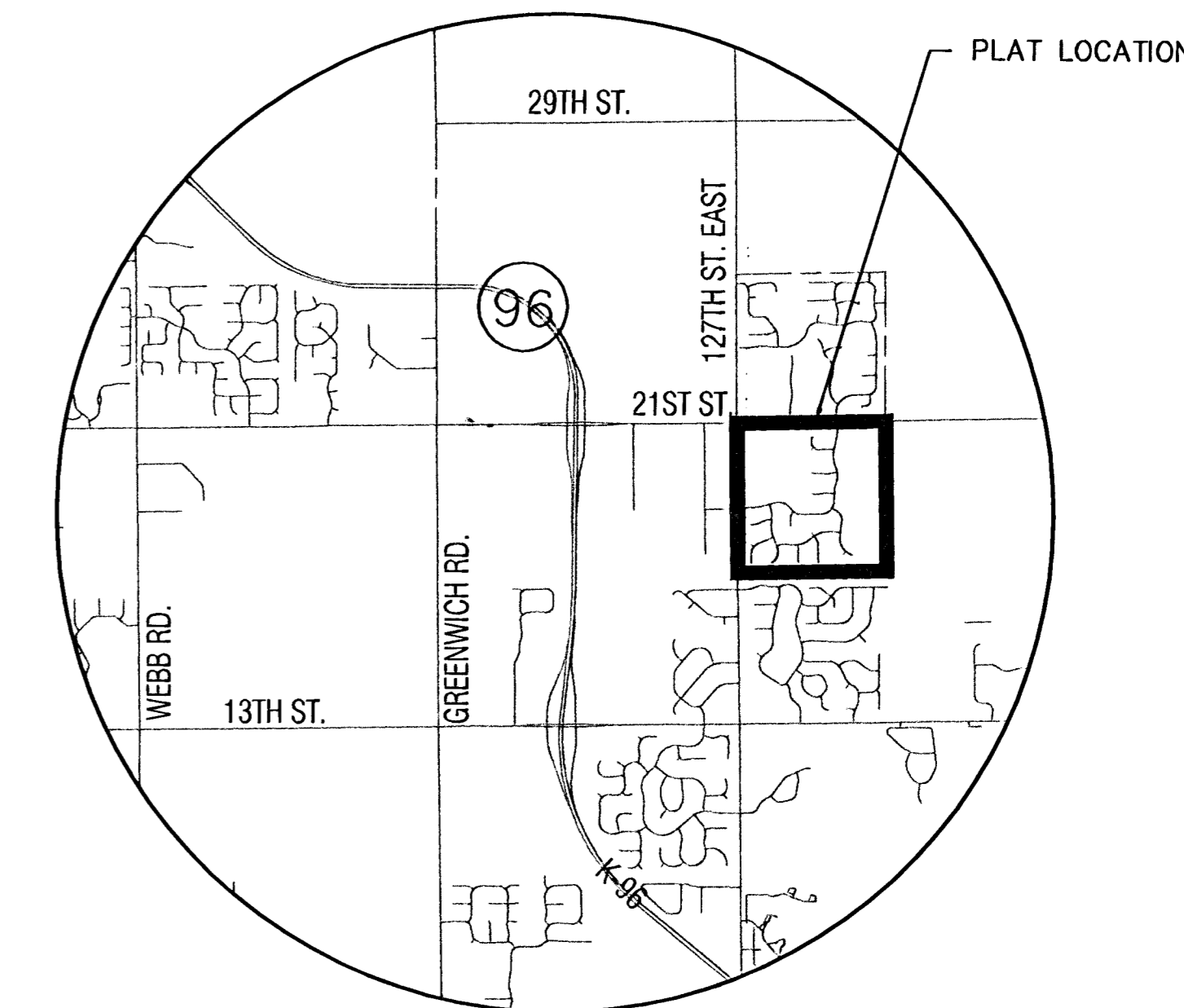
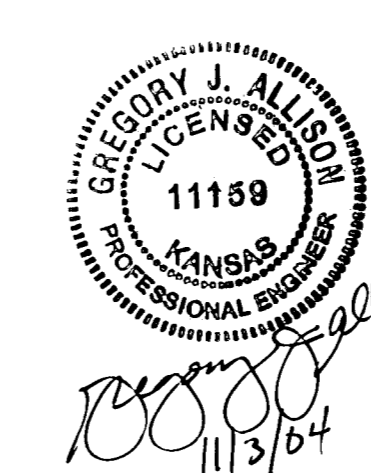


NW. Cor., NW 1/4, Sec. 11,
T27S, R2E, 6th P.M.
Fnd. 3/4" Pipe in Thimble
N1699866.9619
E1691512.6299

NE. Cor., NW 1/4, Sec. 11,
T27S, R2E, 6th P.M.
Fnd. 3/4" Pipe
N1699933.6799
E1694161.6279

SW. Cor., NW 1/4,
Sec. 11, T27S, R2E,
6th P.M., Fnd. 3/4"
Pipe in Thimble
N1697211.0539
E1691552.4949

SE. Cor., NW 1/4, Sec. 11,
T27S, R2E, 6th P.M.
Fnd. Stone
N1697273.5409
E1694206.3599



VICINITY MAP

INDEX TO DRAWINGS

SHEET NO.	DESCRIPTION
1	TITLE SHEET
2	SIDEWALK PLAN
3	GRADING AND TREE REMOVAL DETAIL

LENGTH OF PROJECT	
8' WALK.	1576 L.F.
6' WALK.	158 L.F.

* EARTHWORK SUMMARY	
EXCAVATION	100 C.Y.
COMPACTED FILL	350 C.Y.

* FOR INFORMATION ONLY

BENCHMARK

- BM 1 SQUARE CUT W. END OF S. HEADWALL OF RCB UNDER 21ST ST. N., 1506' +/- E. & 25' +/- S. OF NW COR SEC 11, T 27 S, R 2 E. ELEV.=1351.77
- BM 2 "T" POST 10'+/- N. & 10'+/- W. OF SE COR RES. "B", REED'S COVE. ELEV.=1351.79
- BM 3 "T" POST 30'+/- N. & 10'+/- W. OF SE COR RES. "D", REED'S COVE). ELEV.=1362.66



REED'S COVE ADDITION
PROJECT NAME

TITLE SHEET
SHEET TITLE

LAB	KWS	GJA
DESIGN BY:	DRAWN BY:	CHECKED BY:
OCTOBER 2004	02121_ET	1 / 3
DATE	JOB NO.	SHEET/OF