

**BENCHMARKS:**  
 BM #1 - "+" on north side of manhole rim ~42' east and 28' south of the intersection of MacArthur & Bluelake St.  
 Elev. = 99.97 City Datum

BM #2 - "□" with + cut on northwest face of drop inlet on north side of MacArthur Road, 79.4' North of centerline of MacArthur Road and 152.3' E/SE of southwest corner of Reserve "C", Blue Lake 3rd Addition.  
 Elev. = 95.55 City Datum

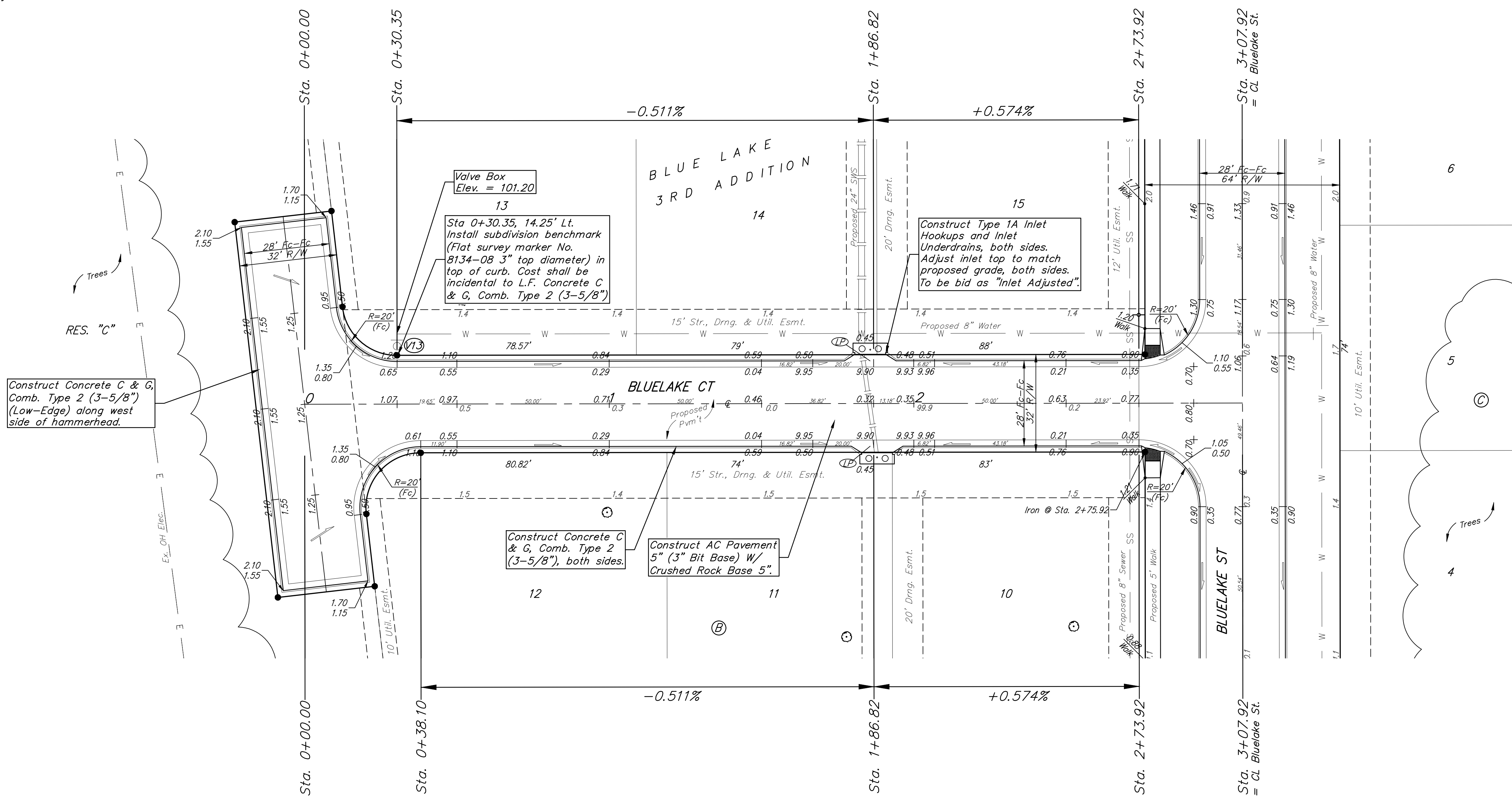
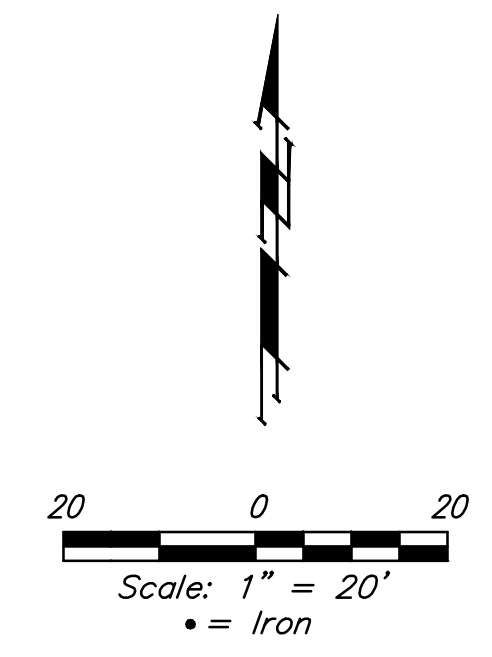
**WATER VALVE LOCATION TABLE**

VALVE NUMBER	STREET	BASILINE STATION	OFFSET DISTANCE	OFFSET DIRECTION
V13	Bluelake Ct.	0+30.35	23.00'	Lt.

Baseline = CL Bluelake Ct.

Paving contractor will be responsible to operate all water valves on the project, in the presence of the inspector, to ensure accessibility to the valves, and that all valves (except blowoffs) are left in the "ON" position when the project is completed.

Subdivision Bench Marks		
Street & Station	Location Description	Elevation
Bluelake Ct. 0+30.35, 14.25' Lt.	Adjacent to Fire Hydrant at SW corner of Lot 13, Block B, Blue Lake 3rd Add.	



Construct Concrete C & G, Comb. Type 2 (3-5/8") (Low-Edge) along west side of hammerhead.

Valve Box  
Elev. = 101.20  
13  
Sta 0+30.35, 14.25' Lt.  
Install subdivision benchmark (Flat survey marker No. 8134-08 3" top diameter) in top of curb. Cost shall be incidental to L.F. Concrete C & G, Comb. Type 2 (3-5/8")

Construct Type 1A Inlet Hookups and Inlet Underdrains, both sides. Adjust inlet top to match proposed grade, both sides. To be bid as "Inlet Adjusted"

Construct Concrete C & G, Comb. Type 2 (3-5/8"), both sides.

Construct AC Pavement 5" (3" Bit Base) W/ Crushed Rock Base 5".

NOTE: ROLL TYPE CURB & GUTTER (TYPE 2) TO BE CONSTRUCTED ON THE PAVEMENT SHOWN ON THIS SHEET. TOP OF CURB ELEVATIONS ARE GIVEN FOR FULL HEIGHT CURB (TYPE 4).

**BAUGHMAN COMPANY**  
 315 Ellis St.  
 Wichita, KS 67211  
 316-262-7271  
 BaughmanCo.com

---

BLUE LAKE 3RD ADD.  
 Phase 1  
**BLUELAKE CT.**  
**(LOTS 10-15)**  
 STREET IMPROVEMENTS  
 PROJECT NUMBER:  
 23-01-E416  
 DESIGN: AEG DRAWN: TMS  
 DATE: October 9, 2023  
 SHEET **9** OF **39**

File: E:\Projects\Blue Lake 3rd Addition\_22-02-P755\Engineering\Phase 1\STR 23-01-E416\Street.dwg