

FINAL PLAT

HAWTHORNE THIRD ADDITION

AN ADDITION TO WICHITA, SEDGWICK COUNTY, KANSAS

BENCH MARKS

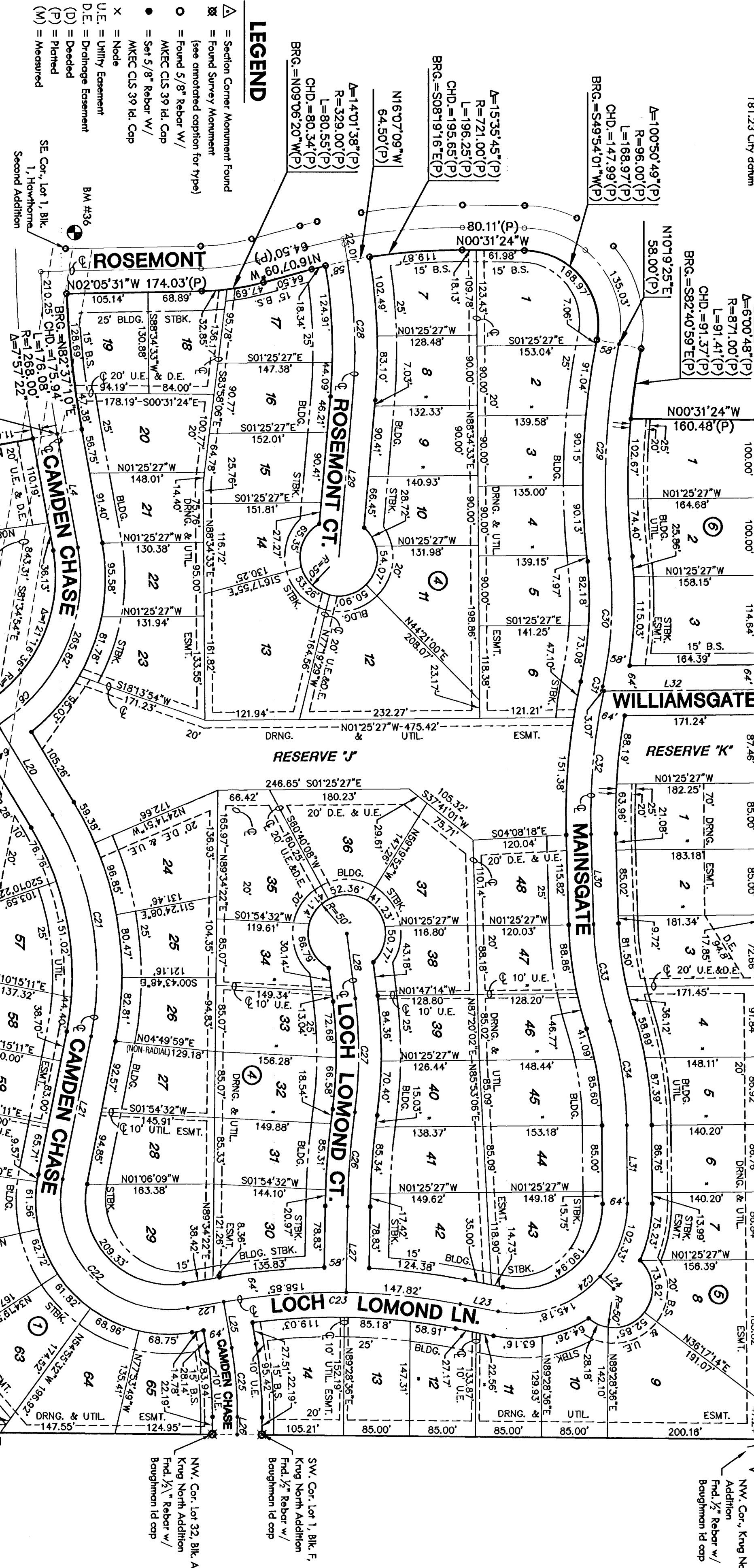
BM #31 "T" Post 4 1/4" x 5/8" of SE Cor. Williamsgate
 and bottom and top of 27' 9/16" S. of the
 center of the well
 Elev. = 1364.22 (NGVD)
 17394 City datum

BM #36 "T" Post 5 1/4" x 5/8" of NW Cor.
 Rosemont and Camden Chase - in Res. "C"
 Elev. = 1368.63 (NGVD)
 18123 City datum

NE Cor. SW 1/4 Sec. 2,
 T27S, R2E, 6th P.M.
 Find 1/2" Bar w/ TTLS
 Brass id. cap in corner.

NE Cor. SE 1/4 Sec. 2,
 T27S, R2E, 6th P.M.
 Find 3/8" Rebar w/ cap in thimble

NW Cor. King North
 Addition
 Find 1/2" Rebar w/
 Baumgum id cap



LEGEND

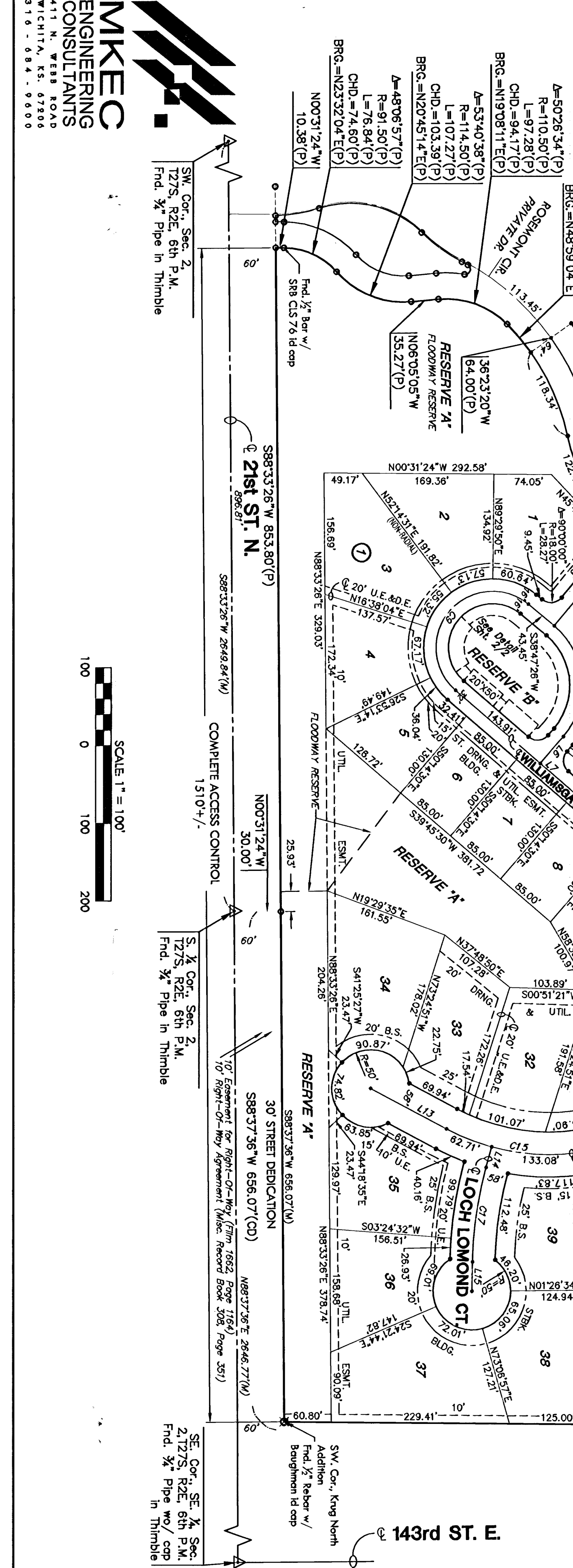
- △ = Section Corner Monument Found
- ⊗ = Found Survey Monument (see annotated caption for type)
- = Found 5/8" Rebar W/ MKCC CLS 3# Id Cop
- = Set 5/8" Rebar W/ MKCC CLS 3# Id Cop
- X = Node
- U.E. = Utility Easement
- D.E. = Drainage Easement
- (D) = Dashed
- (N) = Noted
- (M) = Measured

CURVE TABLE

CURVE	LENGTH	RADIUS	DELTA
C1	131.26	3325.00	23.0827
C2	263.28	2000.00	75.2430
C3	242.97	3500.00	37.4430
C4	174.00	2000.00	48.5417
C5	128.54	3500.00	28.4424
C6	158.27	1000.00	50.8004
C7	228.30	72.42	175.0156
C8	242.71	1100.00	120.0127
C9	190.64	5500.00	19.5133
C10	132.37	8000.00	9.4143
C11	288.14	2300.00	58.8827
C12	192.28	2800.00	40.0352
C13	116.00	2600.00	24.1428
C14	129.91	5000.00	14.0505
C15	330.87	9000.00	22.5825
C16	72.50	1700.00	92.0156
C17	273.35	1400.00	111.0308
C18	273.35	1400.00	111.0308
C19	306.67	850.00	20.4018
C20	242.51	1400.00	101.1743
C21	124.31	5000.00	10.1836
C22	124.31	5000.00	10.1836
C23	124.31	5000.00	10.1836
C24	124.31	5000.00	10.1836
C25	124.31	5000.00	10.1836
C26	124.31	5000.00	10.1836
C27	124.31	5000.00	10.1836
C28	124.31	5000.00	10.1836
C29	124.31	5000.00	10.1836
C30	124.31	5000.00	10.1836
C31	124.31	5000.00	10.1836
C32	124.31	5000.00	10.1836
C33	124.31	5000.00	10.1836
C34	124.31	5000.00	10.1836
C35	124.31	5000.00	10.1836
C36	124.31	5000.00	10.1836
C37	124.31	5000.00	10.1836
C38	124.31	5000.00	10.1836
C39	124.31	5000.00	10.1836
C40	124.31	5000.00	10.1836
C41	124.31	5000.00	10.1836
C42	124.31	5000.00	10.1836
C43	124.31	5000.00	10.1836
C44	124.31	5000.00	10.1836
C45	124.31	5000.00	10.1836
C46	124.31	5000.00	10.1836
C47	124.31	5000.00	10.1836
C48	124.31	5000.00	10.1836
C49	124.31	5000.00	10.1836
C50	124.31	5000.00	10.1836
C51	124.31	5000.00	10.1836
C52	124.31	5000.00	10.1836
C53	124.31	5000.00	10.1836
C54	124.31	5000.00	10.1836
C55	124.31	5000.00	10.1836
C56	124.31	5000.00	10.1836
C57	124.31	5000.00	10.1836
C58	124.31	5000.00	10.1836
C59	124.31	5000.00	10.1836
C60	124.31	5000.00	10.1836
C61	124.31	5000.00	10.1836
C62	124.31	5000.00	10.1836
C63	124.31	5000.00	10.1836
C64	124.31	5000.00	10.1836
C65	124.31	5000.00	10.1836

LINE TABLE

LINE	LENGTH	BEARING
L1	81.49	S41°00'00"W
L2	144.53	S08°48'11"E
L3	135.97	S19°53'51"W
L4	148.14	S78°38'55"E
L5	181.52	S51°13'24"W
L6	45.58	S60°11'30"W
L7	46.28	S89°15'27"E
L8	46.28	S89°15'27"E
L9	49.32	S62°48'38"W
L10	17.60	N85°24'00"E
L11	96.07	S74°42'56"E
L12	114.00	S84°26'10"E
L13	114.00	S72°42'13"E
L14	114.00	S72°42'13"E
L15	32.41	N89°50'27"W
L16	119.41	N70°02'59"W
L17	82.38	N01°00'58"W
L18	22.37	N54°26'53"E
L19	36.54	S24°04'24"W
L20	37.42	S72°44'09"E
L21	37.42	S72°44'09"E
L22	46.78	S09°27'27"E
L23	46.78	S09°27'27"E
L24	33.36	S09°52'28"W
L25	33.36	S09°52'28"W
L26	22.12	S09°12'03"W
L27	22.12	S09°12'03"W
L28	83.91	N81°32'40"E
L29	204.62	S55°37'53"E
L30	113.82	N87°40'02"E
L31	100.75	N88°34'59"E
L32	200.41	N01°23'36"W



MIKEC ENGINEERING CONSULTANTS
 414 N. WEISS AVE.
 WICHITA, KANSAS 67202
 316-264-9444, 9444

