

**BENCHMARKS:**  
 BM #1: Small RR spike in west face of PP, east side of 135th St. W., east of SE corner of Lot 1, Block A, Shadow Woods Addition. Elev. = 159.37 (City Datum)

BM #2: C.O.W. disc at west end of NW return adjacent to fire hydrant at Cavit & Decker, adjacent to SE corner of Lot 24, Block A, Shadow Woods Addition. Elev. = 187.31 (City Datum)

BM #3: C.O.W. disc at west end of SW return adjacent to fire hydrant at Cavit & Burton, adjacent to E corner of Lot 24, Block C, Shadow Woods Addition. Elev. = 193.19 (City Datum)

Curve #4  
 Curve Data Based on Fc of Curb  
 Rad. = 300' Delta = 13° 29' 45" Tangent = 35.50'  
 Arc = 70.65' L.C. = 70.50' Def.Ft. = 5.73072 Min.

Station	Arc	FACE CHORD LENGTHS 8" Rt.	Defl.	T. Defl.
A	-	-	0'00"00"	0'00"00"
B	23.55'	22.92'	2'14"57"	2'14"57"
C	23.55'	22.92'	2'14"57"	4'29"55"
D	23.55'	22.92'	2'14"57"	6'44"52"

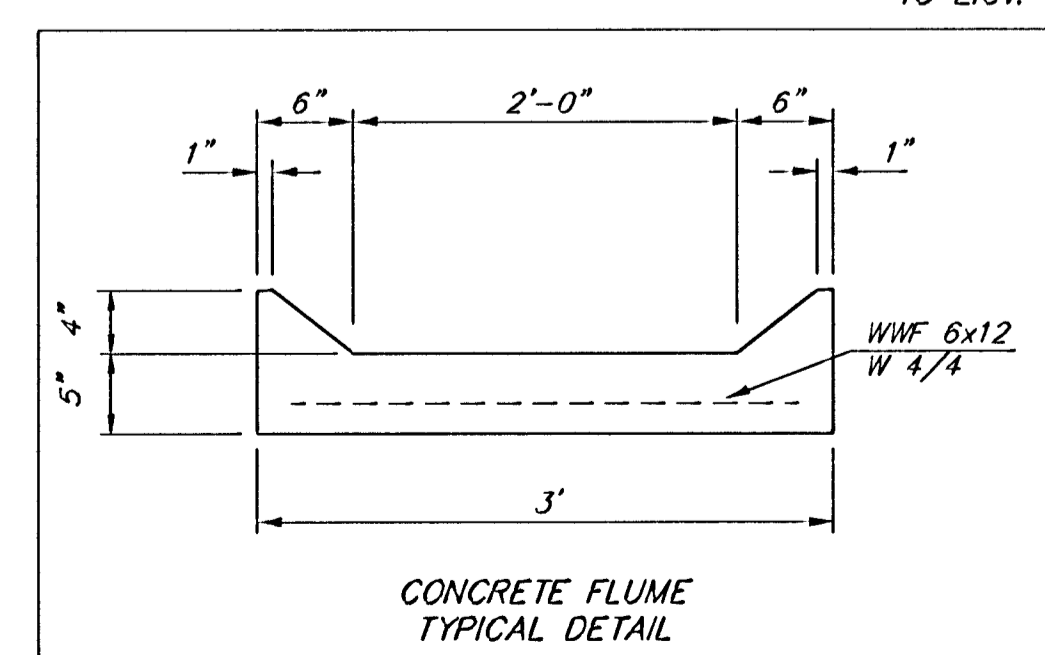
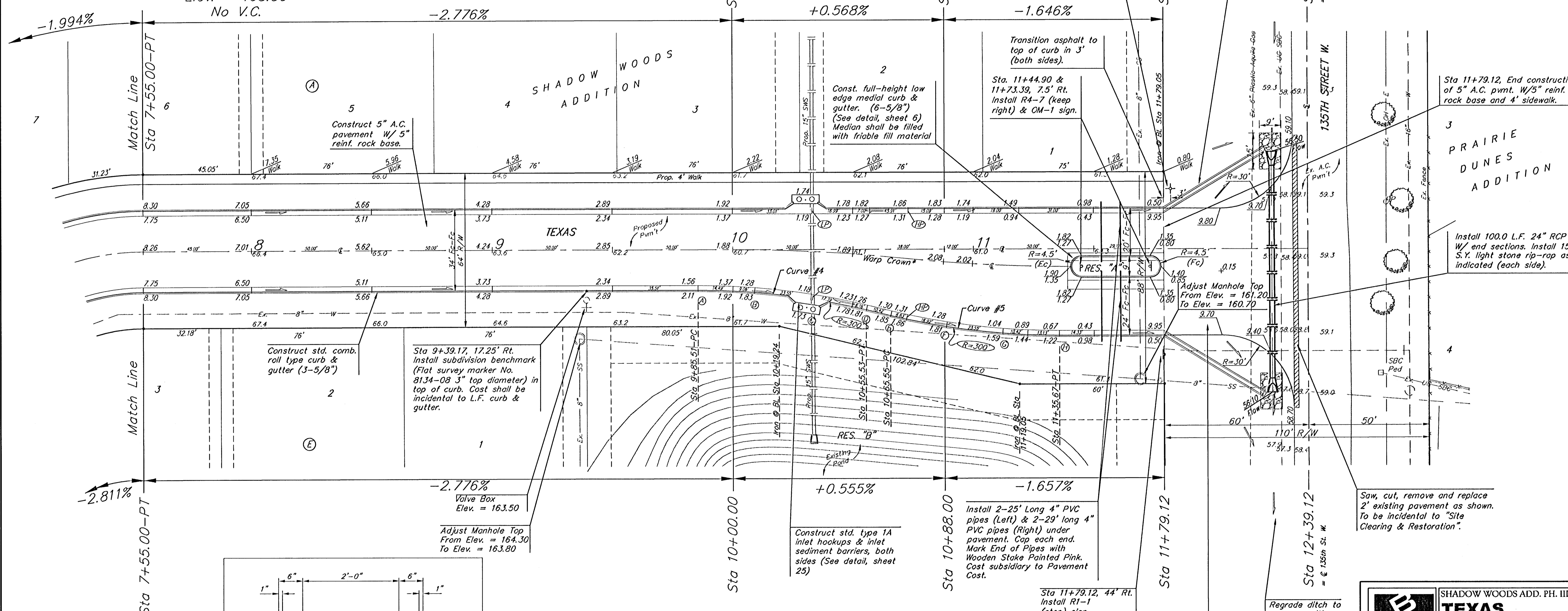
Curve #5  
 Curve Data Based on Fc of Curb  
 Rad. = 300' Delta = 13° 29' 45" Tangent = 35.50'  
 Arc = 70.65' L.C. = 70.50' Def.Ft. = 5.73072 Min.

Station	Arc	FACE CHORD LENGTHS 8" Rt.	Defl.	T. Defl.
E	-	-	0'00"00"	0'00"00"
F	23.55'	24.18'	2'14"57"	2'14"57"
G	23.55'	24.18'	2'14"57"	4'29"55"
H	23.55'	24.18'	2'14"57"	6'44"52"

P.V.I.  
 Elev. = 161.50  
 100' V.C.

P.V.I.  
 Elev. = 162.00  
 62' V.C.

P.V.I.  
 Elev. = 168.30  
 No V.C.



\*Warp crown shall conform to approximate center of pavement.

NOTE: ROLL TYPE CURB & GUTTER TO BE CONSTRUCTED ON THE PAVEMENT SHOWN ON THIS SHEET. TOP OF CURB ELEVATIONS ARE GIVEN FOR FULL HEIGHT CURB.

**Baughman TEXAS**  
 SHADOW WOODS ADD. PH. III  
 STA 7+55.00 TO STA 12+39.12

Baughman Company, P.A. 315 Ellis St. Wichita, KS 67211 P.316.263.7271 F.316.262.0149  
 ENGINEERING | SURVEYING | PLANNING | LANDSCAPE ARCHITECTURE

PROJECT NUMBER 412-83723	DESIGN TMS
REVISIONS	APPROVED DATE 08/05
SCALE Noted	
SHEET <b>9 OF 39</b>	

ShadowWoods(Phase)3(Sta) 0505-E242