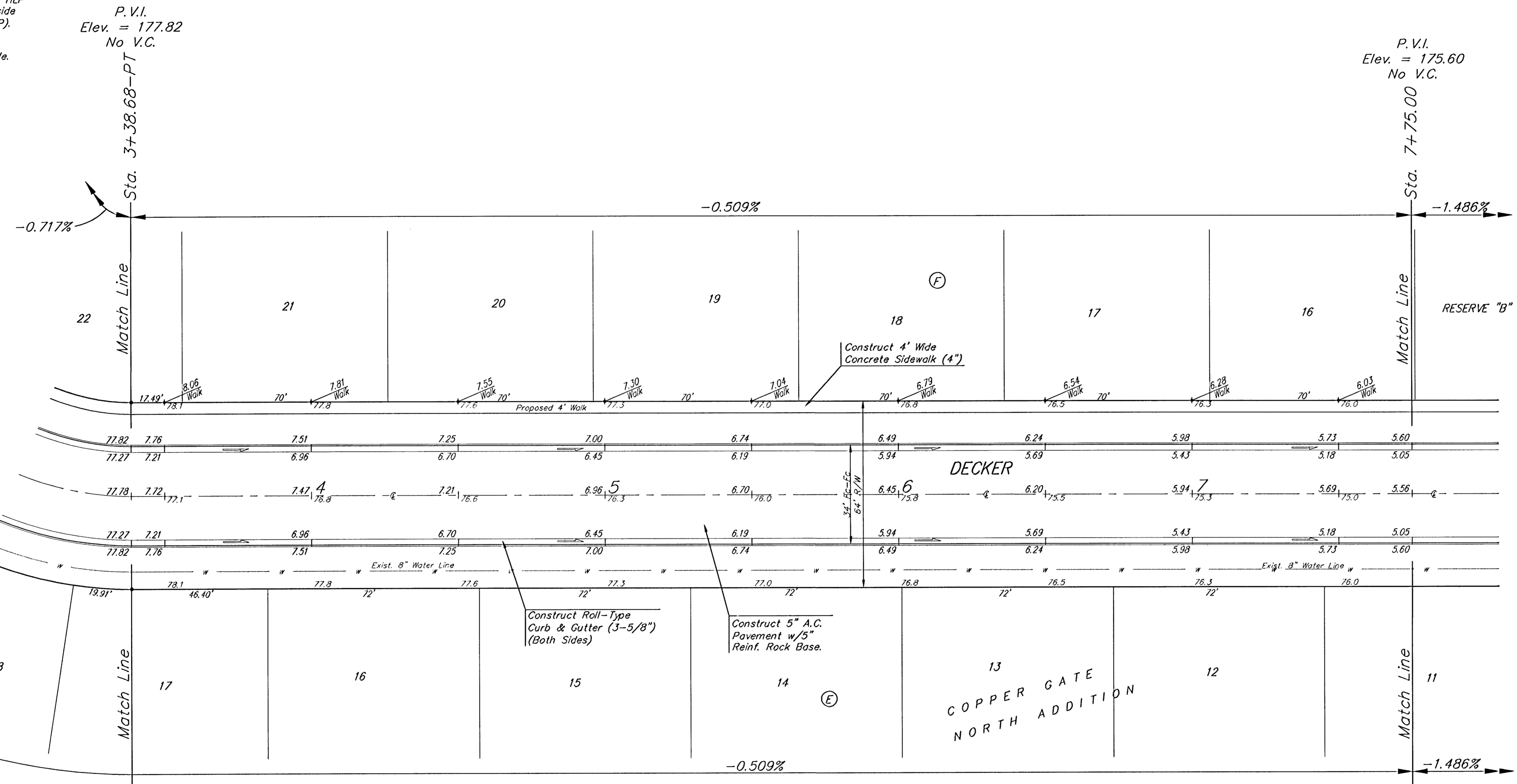
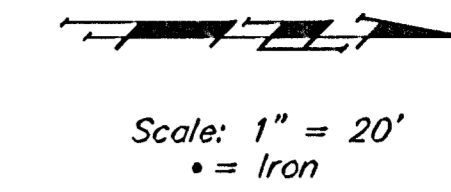


BENCHMARKS:

BM #1: C.O.W. disc at SW corner of intersection.
30.00'± S. of CL of 13th St. N.
35.00'± W. of CL of 135th St. W.
Elev. = 168.25 City Datum

BM #2: Small RR spike in 4th HLP
W. of 135th St. W. on south side of 13th St. N. (N. face of HLP).
Elev. = 179.24 City Datum

BM #3: RR spike in Power Pole.
1321.65 W. of 135th St. W.
30' N. of 13th St. N.
Elev. = 178.45 City Datum



P.V.I.
Elev. = 177.82
No V.C.

P.V.I.
Elev. = 175.60
No V.C.

Subdivision Bench Marks		
Street & Station	Location Description	Elevation
Aksorben 8+40.08, 17.25' Lt.	Adjacent to Fire Hydrant at near common lot corner of Lots 12-13, Block A.	
Decker 0+37.00, 17.25' Rt.	Adjacent to Fire Hydrant at E. End of S. Curb Return of Aksorben & Decker.	
Decker 8+17.10, 17.25' Rt.	Adjacent to Fire Hydrant at near common lot corner of Lots 10-11, Block E.	
Decker 11+67.00, 29.40' Rt.	Adjacent to Fire Hydrant at E. End of W. Curb Return of Kiwi & Decker.	

NOTE: ROLL TYPE CURB & GUTTER TO BE CONSTRUCTED ON THE PAVEMENT SHOWN ON THIS SHEET. TOP OF CURB ELEVATIONS ARE GIVEN FOR FULL HEIGHT CURB.

P.V.I.
Elev. = 175.60
No V.C.

	Copper Gate North Addition - Phase I	
	DECKER	
Sta. 3+38.68 TO STA. 7+75.00		
Baughman Company, P.A. 315 E. St. W. Box 438111 F 3162021040		
ENGINEERING SURVEYING PLANNING LANDSCAPE ARCHITECTURE		
PROJECT NUMBER 472-84104	DESIGN NBW	DRAWN TMS/JAK
REVISIONS	APPROVED	DATE 10/05/05
	SCALE Noted	SHEET
		10 OF 28