

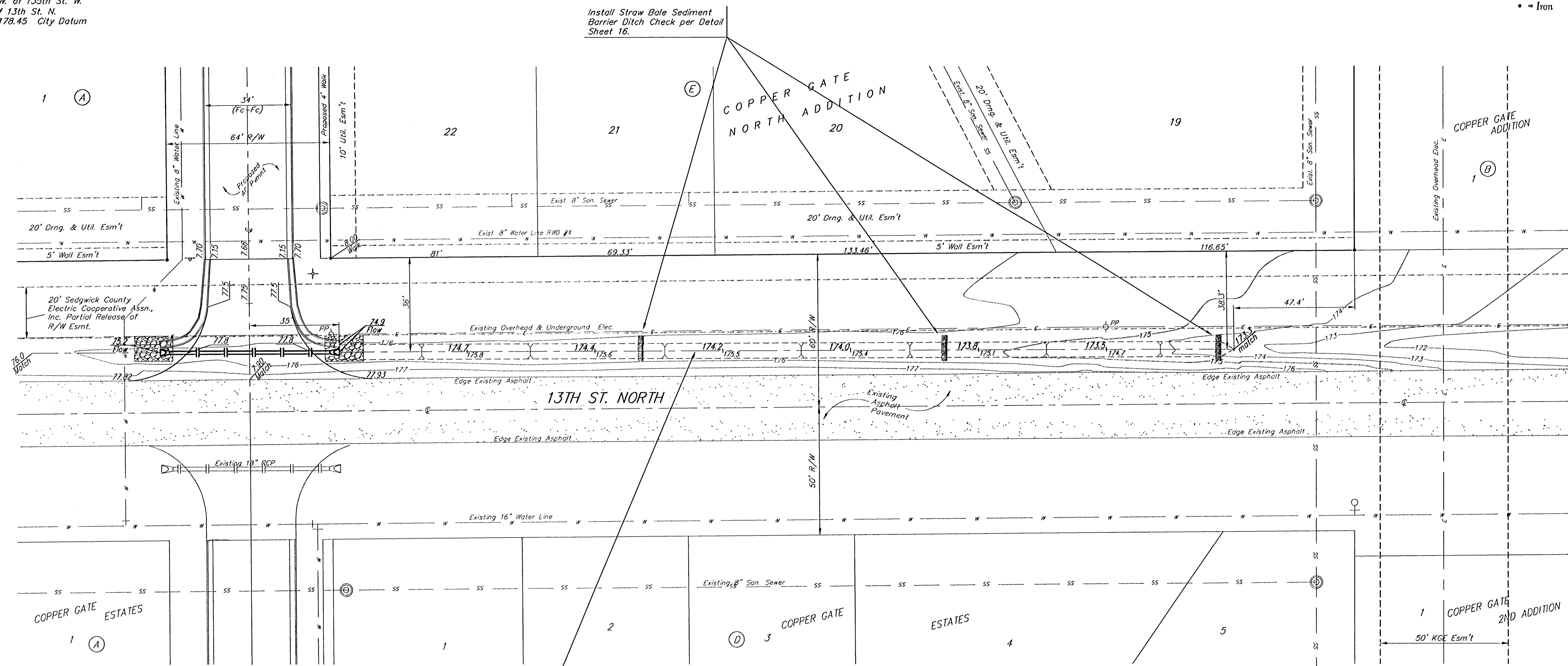
BENCHMARKS:

BM #1: C.O.W. disc at SW corner of intersection.
30.00'± S. of CL of 13th St. N.
35.00'± W. of CL of 135th St. W.
Elev. = 168.25 City Datum

BM #2: Small RR spike in 4th HLP
W. of 135th St. W. on south side of 13th St. N. (N. face of HLP).
Elev. = 179.24 City Datum

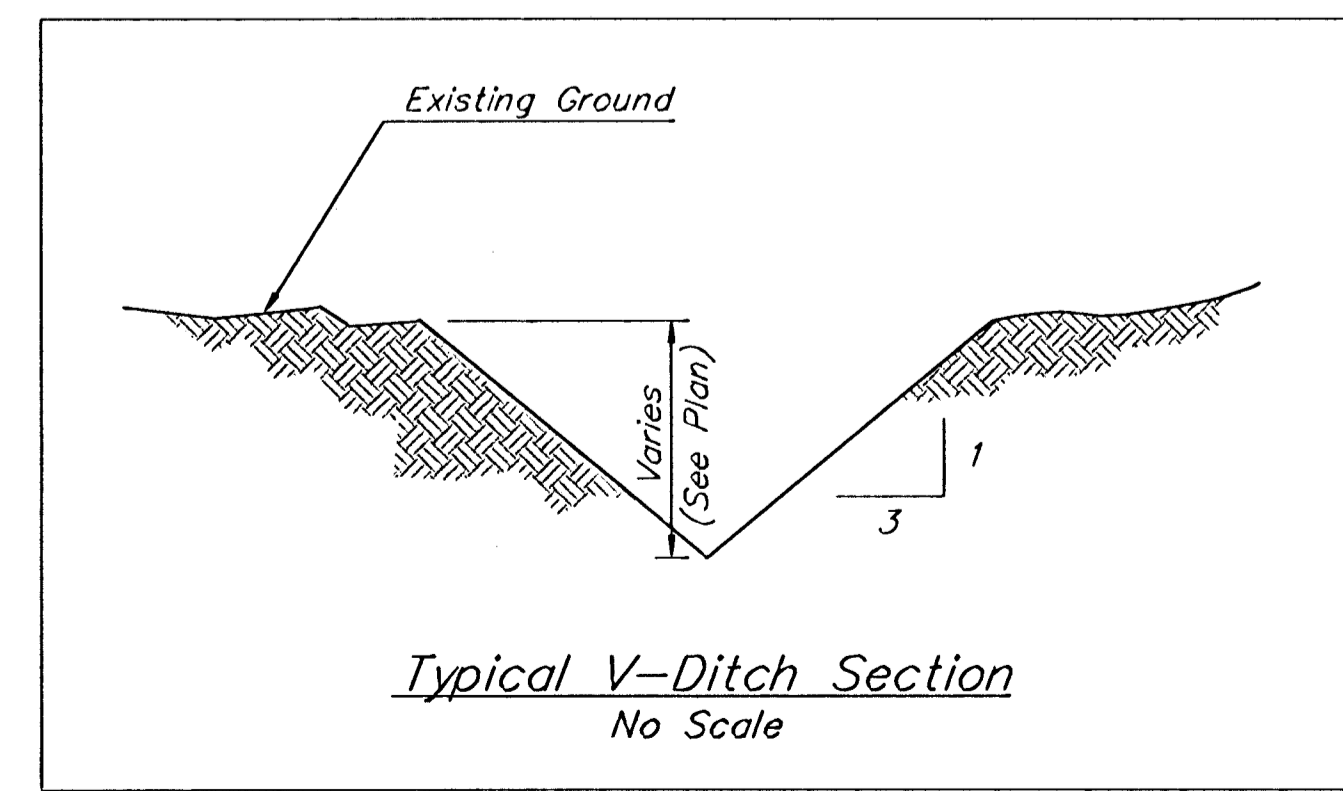
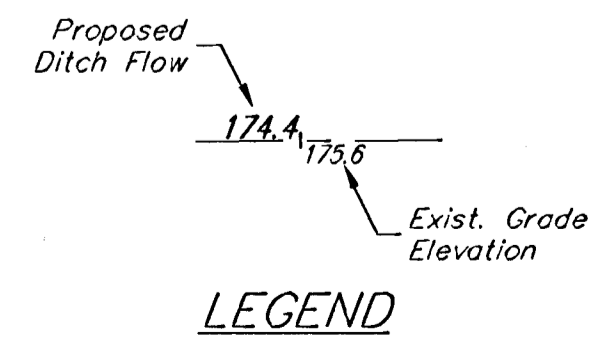
BM #3: RR spike in Power Pole.
1321.65 W. of 135th St. W.
30' N. of 13th St. N.
Elev. = 178.45 City Datum

Scale: 1" = 20'
• = Iron



Install Straw Bale Sediment Barrier Ditch Check per Detail Sheet 16.

Regrade 350 L.F. Existing Ditch to Proposed Elves. per Detail This Sheet.
Cost to be incidental to "Site Clearing & Restoration"



		Copper Gate North Addition - Phase I	
		Ditch Plan	
Baughman Company, P.A. 315 Elm St. W. Palm, KS 67111 P 316-363-7171 F 316-363-0149 ENGINEERING SURVEYING PLANNING LANDSCAPE ARCHITECTURE		DESIGN	DRAWN
PROJECT NUMBER	472-84104	APPROVED	DATE
REVISIONS:		SCALE	10/05/05
		SCALE	Noted
		SHEET	14 OF 28
Copper Gate North/Phase I/ditch.dwg		05-02-E162	