

**BENCHMARKS**

BM #1: Brass Plate on North Hub Guard of R.C.B.C. 50' East of NW Corner NE 1/2, Sec. 22, Twp. 26-S, R-1-E.  
Elev. = 1371.83 (NGVD29)

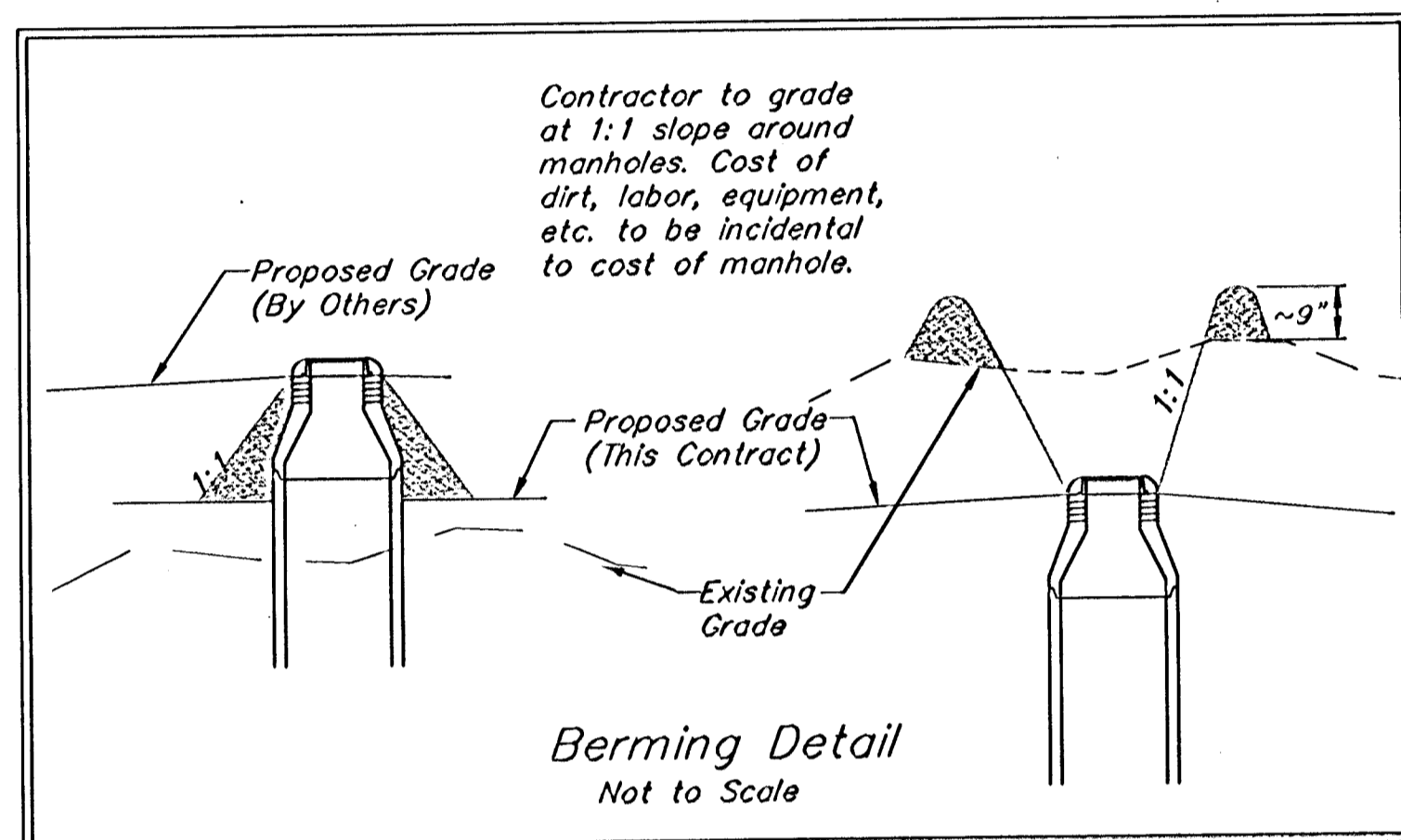
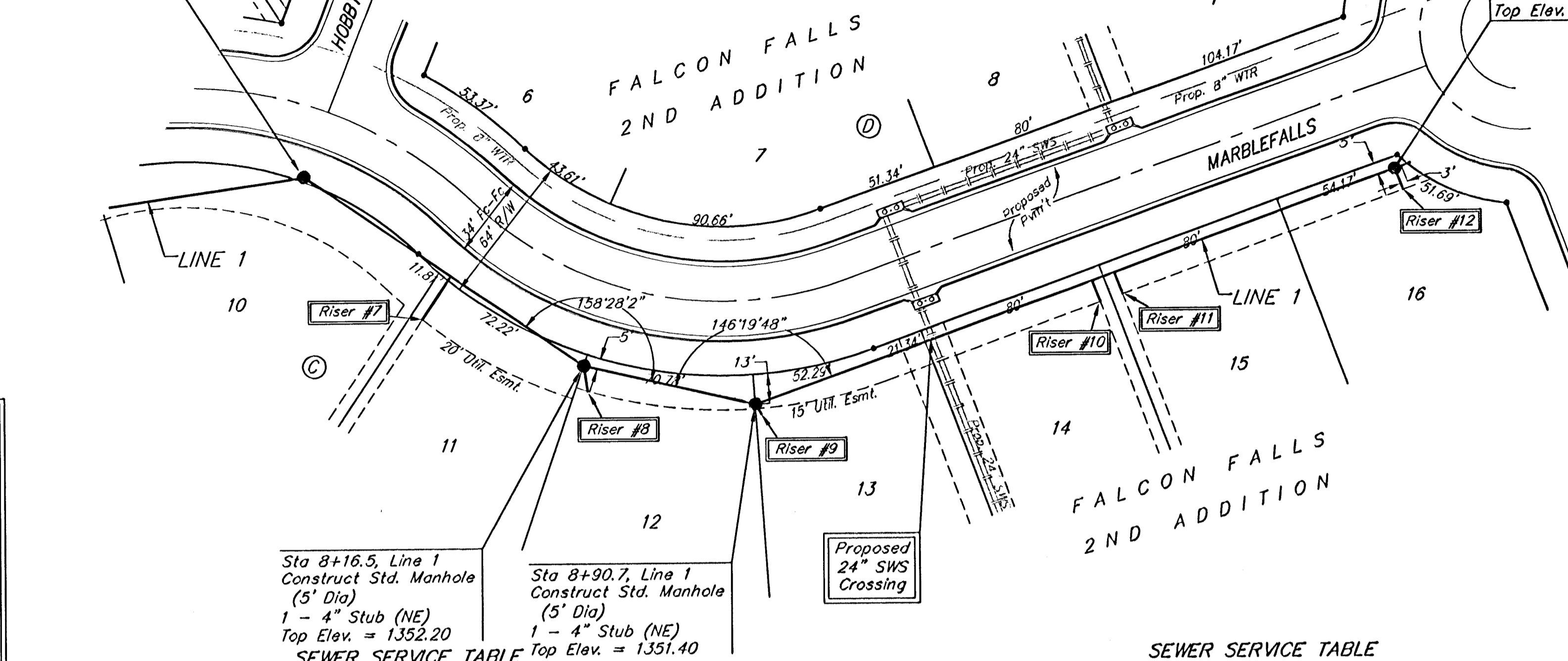
BM #2: " " cut on East Hub Guard of R.C.B.C. 110' S. of the SE Cor., SE 1/4, Sec. 22, Twp. 26-S, R-1-E.  
Elev. = 1359.54 (NGVD29)

Sta 6+73.2, Line 1  
Match Point

Sta 11+78.5, End Line 1  
Construct Std. Manhole  
(5' Dia)  
1 - 10" Stub (N)  
1 - 4" Stub (E)  
Top Elev. = 1352.30



Scale: 1" = 40' Horizontal  
1" = 5' Vertical  
• = Iron



Sta 8+16.5, Line 1  
Construct Std. Manhole  
(5' Dia)  
1 - 4" Stub (NE)  
Top Elev. = 1352.20

Sta 8+90.7, Line 1  
Construct Std. Manhole  
(5' Dia)  
1 - 4" Stub (NE)  
Top Elev. = 1351.40

**SEWER SERVICE TABLE**

NUMBER	TYPE	LOCATION			FOR INFORMATION ONLY	
		LOT NO.	BLOCK NO.	LINE NO.	STATION \ DIRECTION	APPROXIMATE LENGTH 4" PIPE VERTICAL HORIZONTAL
7	10" x 4" Tee Saddle	11	C	1	7+49/Rt.	16.0' 22'
8	4" x 4" Tee Saddle	12	C	1	8+17/Rt.	15.5' 11'
9	4" x 4" Tee Saddle	13	C	1	8+91/Rt.	14.5' 5'

NOTE: Vertical Riser Pipe shall be extended to 2' minimum above ground water elevation and 4' maximum below proposed ground elevation.

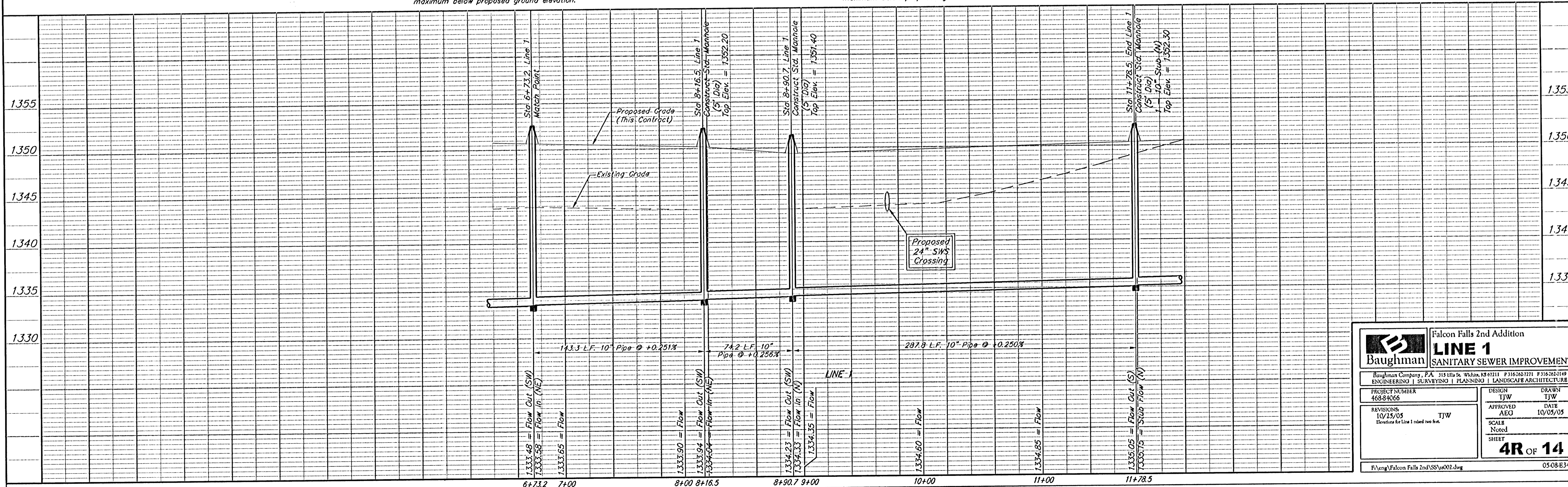
**SEWER SERVICE TABLE**

NUMBER	TYPE	LOCATION			FOR INFORMATION ONLY	
		LOT NO.	BLOCK NO.	LINE NO.	STATION \ DIRECTION	APPROXIMATE LENGTH 4" PIPE VERTICAL HORIZONTAL
10	10" x 4" Tee Saddle	14	C	1	10+42/Rt.	14.5' 10'
11	10" x 4" Tee Saddle	15	C	1	10+52/Rt.	14.5' 10'
12	4" x 4" Tee Saddle	16	C	1	11+79/Rt.	14.5' 10'

NOTE: Vertical Riser Pipe shall be extended to 2' minimum above ground water elevation and 4' maximum below proposed ground elevation.

Remove trees only as necessary for sanitary sewer construction and only with permission of Developer or Baughman Co. Cost of removal to be incidental to lump sum bid item "Site Clearing & Restoration".

All excavation for Line 1, from Station 6+73.2 to Station 11+78.5, shall be sand backfilled to within two feet of existing grade. The sand shall be vibrated and water jetted during backfilling. Cost shall be incidental to pipe cost.



**Baughman** Falcon Falls 2nd Addition  
**LINE 1**  
SANITARY SEWER IMPROVEMENTS

Baughman Company, P.A. 115 Elm St., Wilkes-Barre, PA 18262-1019  
ENGINEERING | SURVEYING | PLANNING | LANDSCAPE ARCHITECTURE

PROJECT NUMBER 46834066	DESIGN TJW	DRAWN TJW
REVISIONS 10/25/05 Discussed for Line 1 raised two feet.	APPROVED AEG	DATE 10/05/05
SCALE Noted		SHEET <b>4R OF 14</b>

F:\eng\Falcon Falls 2nd\SS\ss002.dwg 05-08-E344