

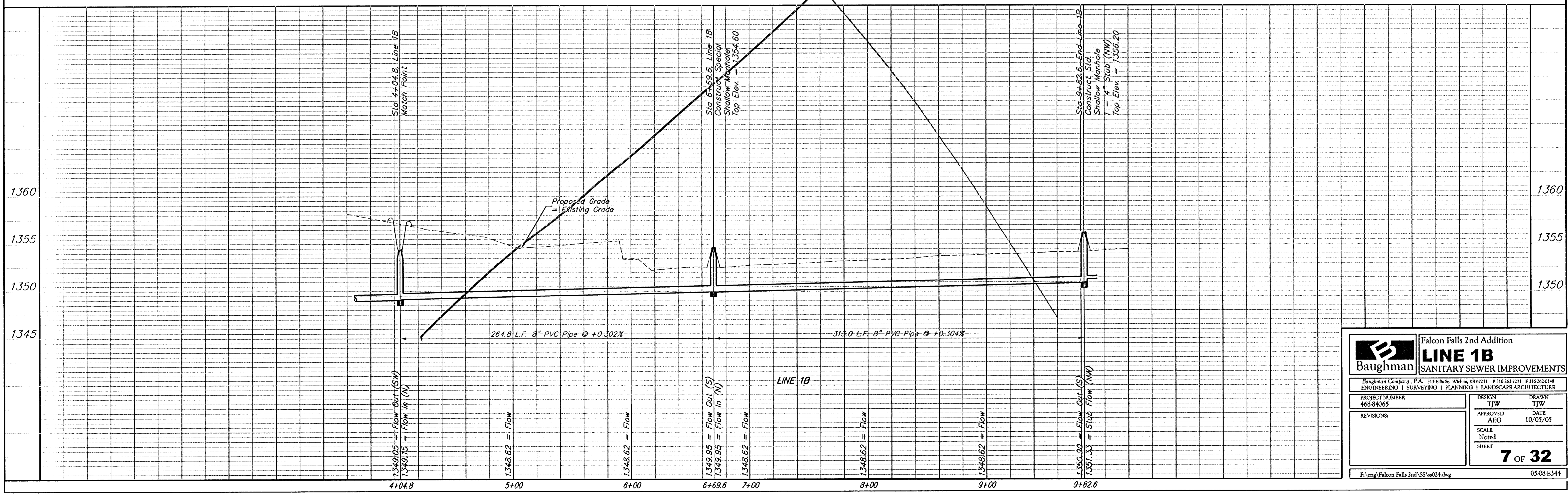
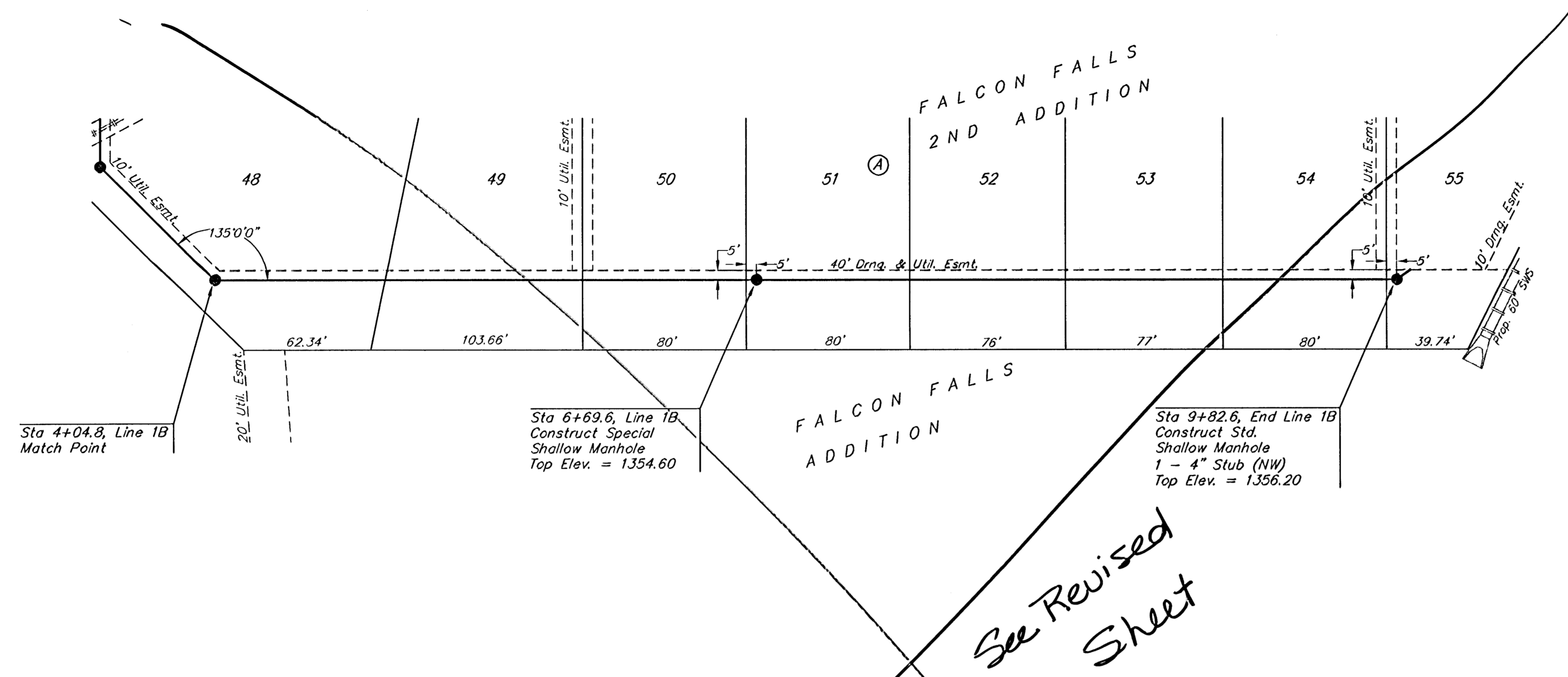
BENCHMARKS

BM #1: Brass Plate on North Hub Guard of R.C.B.C. 50' East of NW Corner NE 1/2, Sec. 22, Twp. 26-S, R-1-E.
Elev. = 1371.83 (NGVD29)

BM #2: "□" cut on East Hub Guard of R.C.B.C., 110' S. of the SE Cor., SE 1/4, Sec. 22, Twp. 26-S, R-1-E.
Elev. = 1359.54 (NGVD29)



Scale: 1" = 40' Horizontal
1" = 5' Vertical
• = Iron



| | | | |
|--|-----------------|---------------------------|------------------|
| | | Falcon Falls 2nd Addition | |
| | | LINE 1B | |
| SANITARY SEWER IMPROVEMENTS | | | |
| <small>Baughman Company, P.A. 315 5th St. W. Salem, NH 03071 P: 603-882-1111 F: 603-882-1119 ENGINEERING SURVEYING PLANNING LANDSCAPE ARCHITECTURE</small> | | | |
| PROJECT NUMBER 468-84065 | DESIGN TJW | DRAWN TJW | DATE 10/05/05 |
| REVISIONS: | APPROVED AEG | SCALE Noted | SHEET |
| | | | 7 OF 32 |
| F:\eng\Falcon Falls 2nd SSW\024.dwg | | | 0508E344 |