

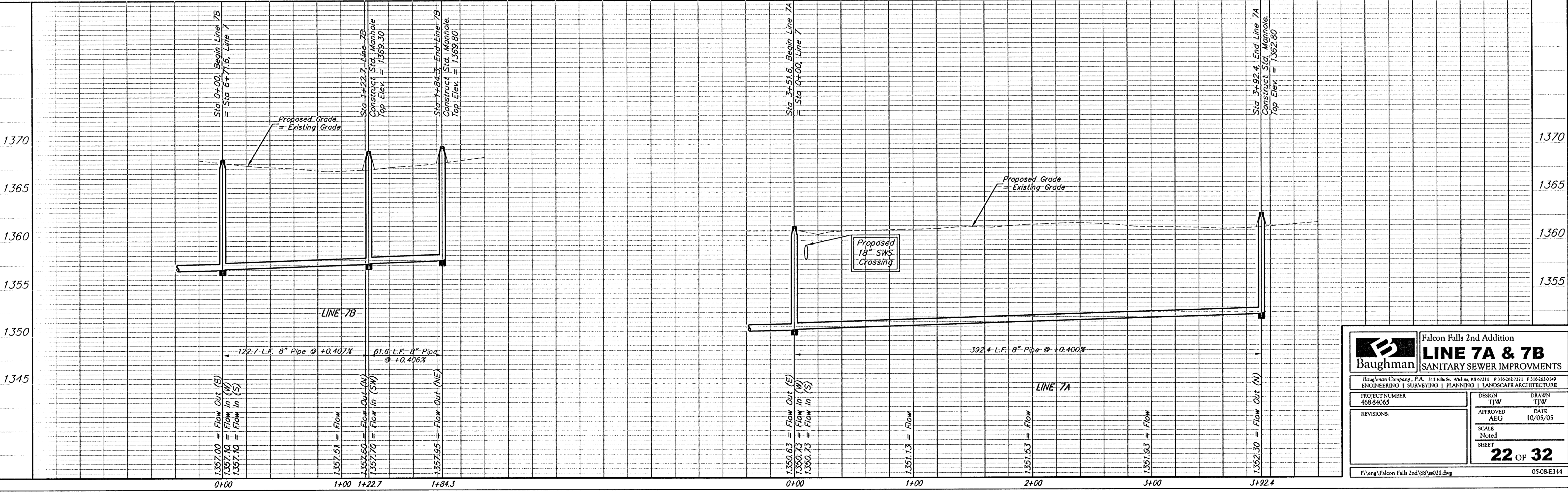
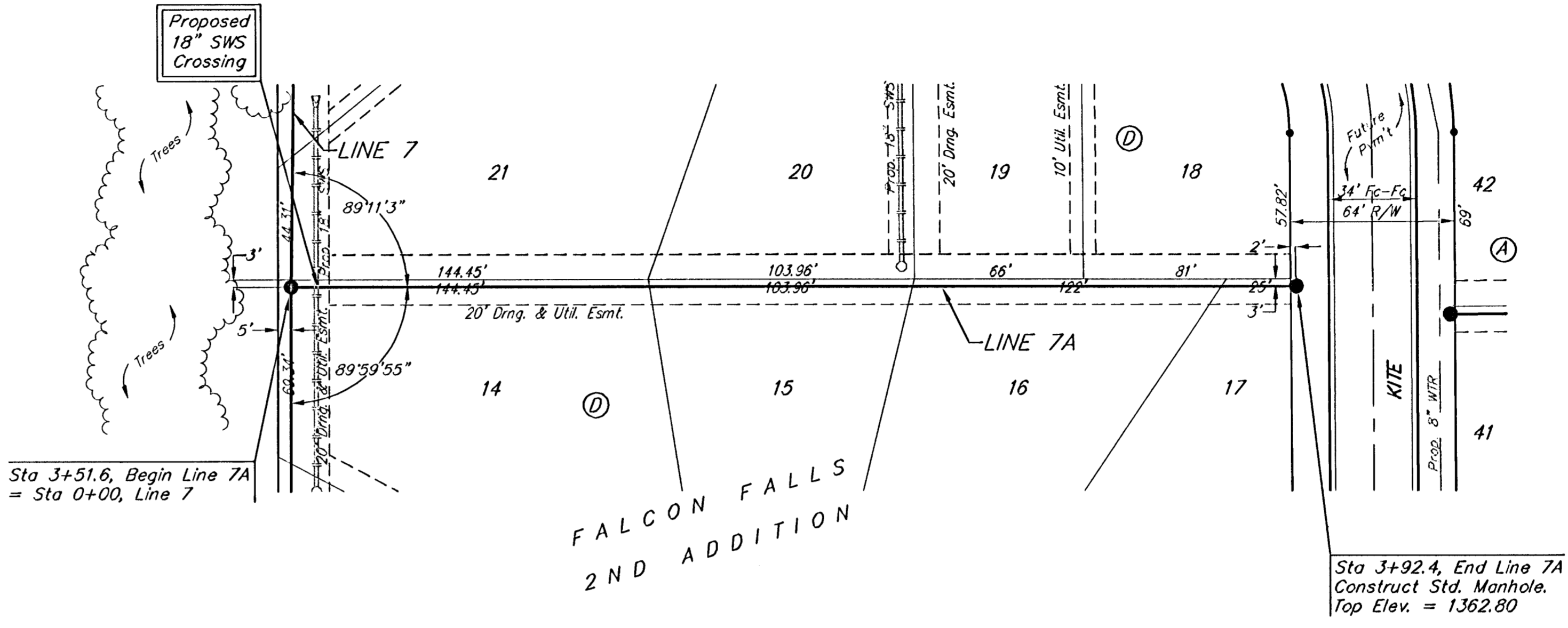
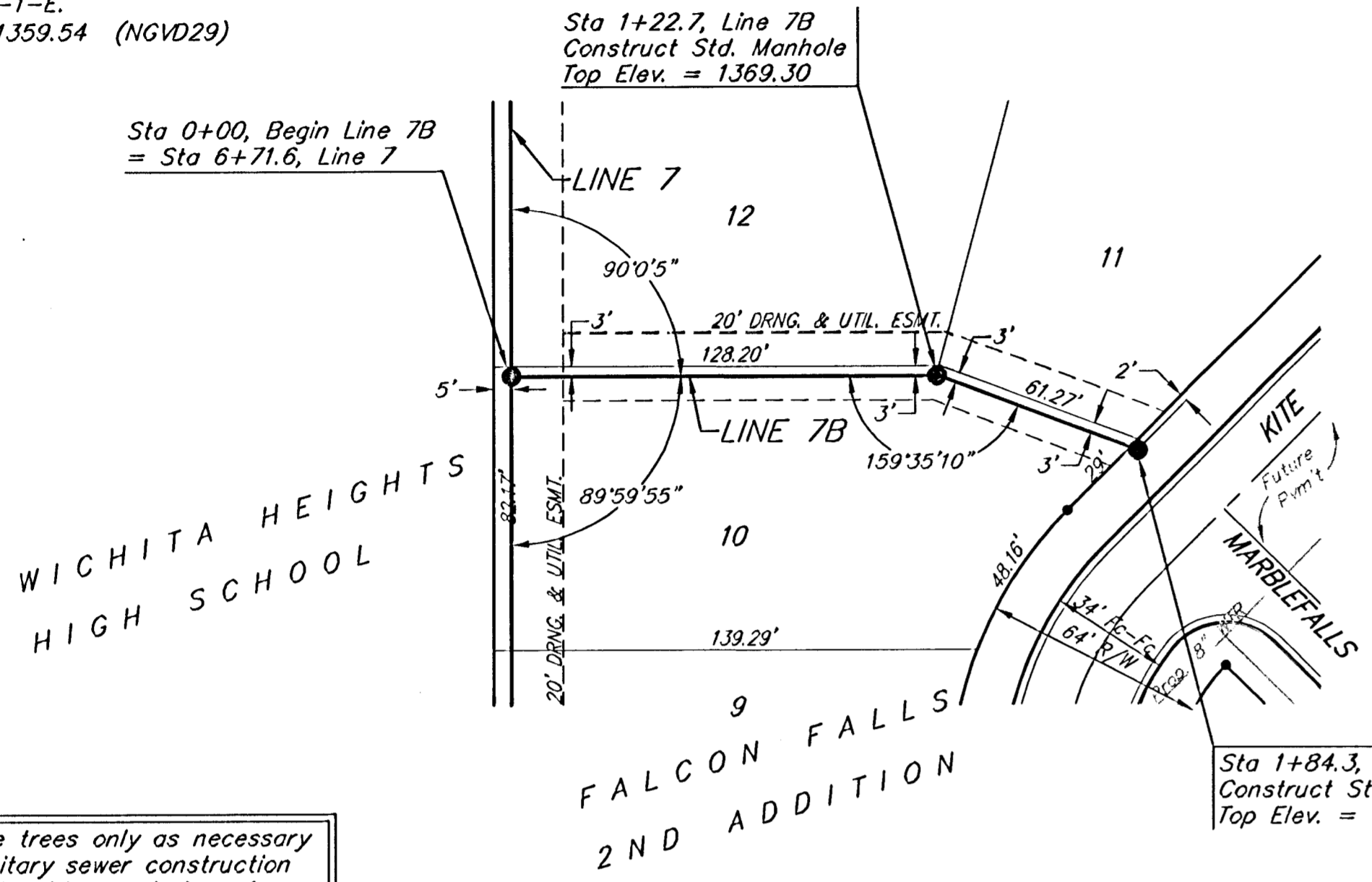
BENCHMARKS

BM #1: Brass Plate on North Hub Guard of R.C.B.C. 50' East of NW Corner NE 1/4, Sec. 22, Twp. 26-S, R-1-E.
Elev. = 1371.83 (NGVD29)

BM #2: " " cut on East Hub Guard of R.C.B.C., 110' S. of the SE Cor., SE 1/4, Sec. 22, Twp. 26-S, R-1-E.
Elev. = 1359.54 (NGVD29)



Scale: 1" = 40' Horizontal
1" = 5' Vertical
• = Iron



		Falcon Falls 2nd Addition LINE 7A & 7B SANITARY SEWER IMPROVEMENTS	
<small>Baughman Company, P.A. 315 S. 11th St., Waukesha, WI 53181 P 262-3821 F 262-3821 ENGINEERING SURVEYING PLANNING LANDSCAPE ARCHITECTURE</small>			
PROJECT NUMBER 468-84065	DESIGN TJW	DRAWN TJW	
REVISIONS:	APPROVED AEG	DATE 10/05/05	
		SCALE Noted	
		SHEET 22 OF 32	
<small>F:\eng\Falcon Falls 2nd\SS\ss021.dwg</small>			0508E344