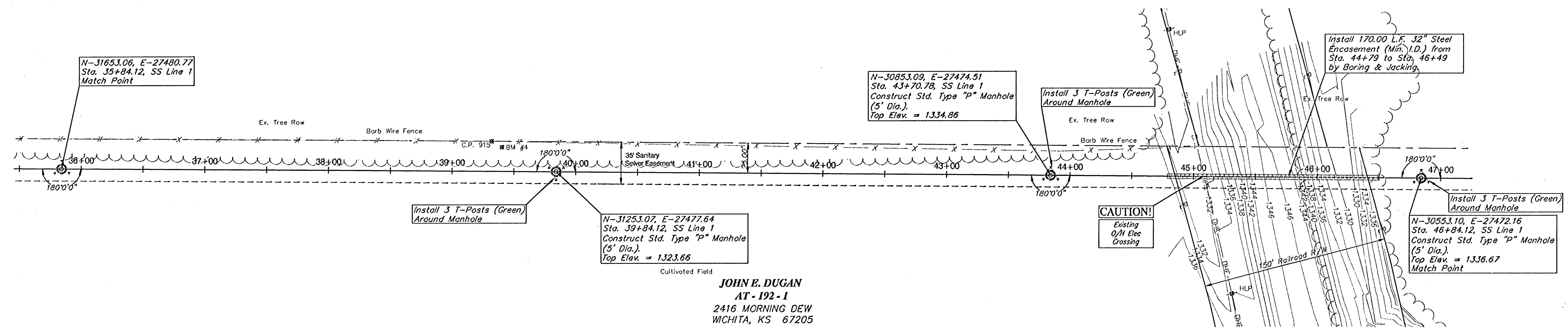


SCALE:
 1" = 40' HORIZONTAL
 1" = 5' VERTICAL



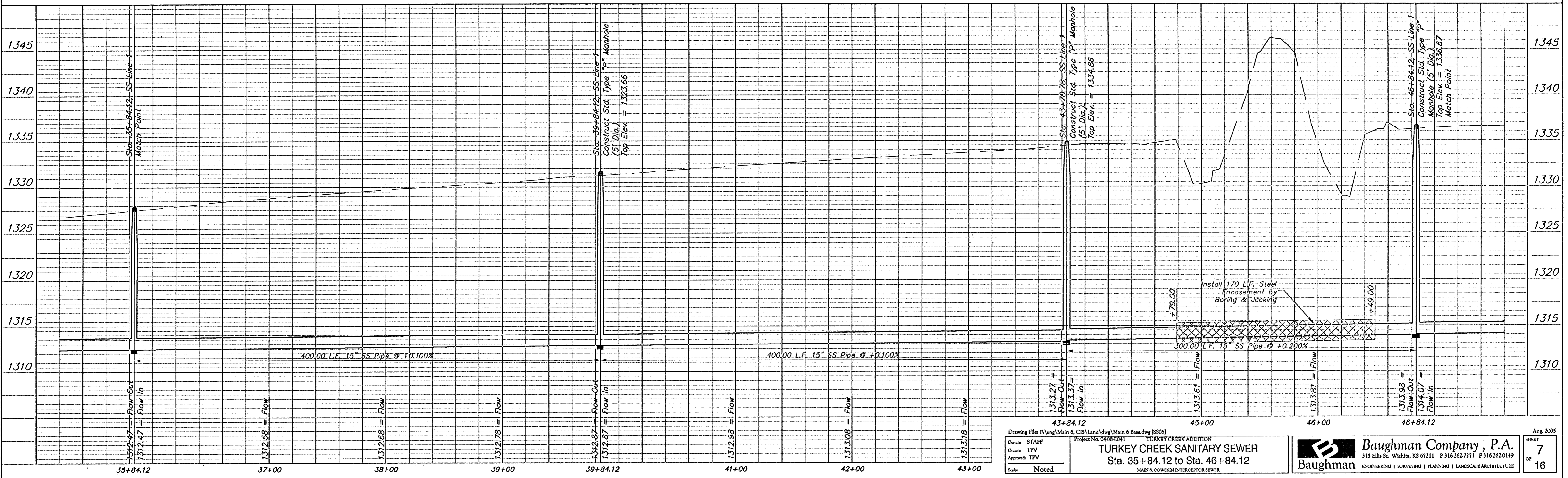
N-31253.07, E-27477.64
 Sta. 39+84.12, SS Line 1
 Construct Std. Type "P" Manhole
 (5' Dia.)
 Top Elev. = 1323.66

N-30853.09, E-27474.51
 Sta. 43+70.78, SS Line 1
 Construct Std. Type "P" Manhole
 (5' Dia.)
 Top Elev. = 1334.86

N-30553.10, E-27472.16
 Sta. 46+84.12, SS Line 1
 Construct Std. Type "P" Manhole
 (5' Dia.)
 Top Elev. = 1336.67
 Match Point

JOHN E. DUGAN
 AT-192-1
 2416 MORNING DEW
 WICHITA, KS 67205
 NW 1/4, Section 36, Twp 27-S, R 2-W

The Contractor shall have the option of replacing the three (3) T-Posts with one (1) Fiberglass Marking Post (Green) as supplied by In Stock Now! Inc. (888) 547-4477, or approved equal. Cost of the T-Posts or Fiberglass Marker shall not be paid for directly, but shall be considered INCIDENTAL to the Manhole Construction.



Drawing File: R:\eng\Main & CIS\Land\Jug\Main & Base.dwg (SS05)
 Project No. 0408-041
TURKEY CREEK ADDITION
TURKEY CREEK SANITARY SEWER
 Sta. 35+84.12 to Sta. 46+84.12
 MAIN & COWSKIN INTERCEPTOR SEWER

Baughman Company, P.A.
 315 Ellis St. Wichita, KS 67211 P 316-262-7271 F 316-262-0149
 ENGINEERING | SURVEYING | PLANNING | LANDSCAPE ARCHITECTURE

Aug 2005
 SHEET 7
 OF 16