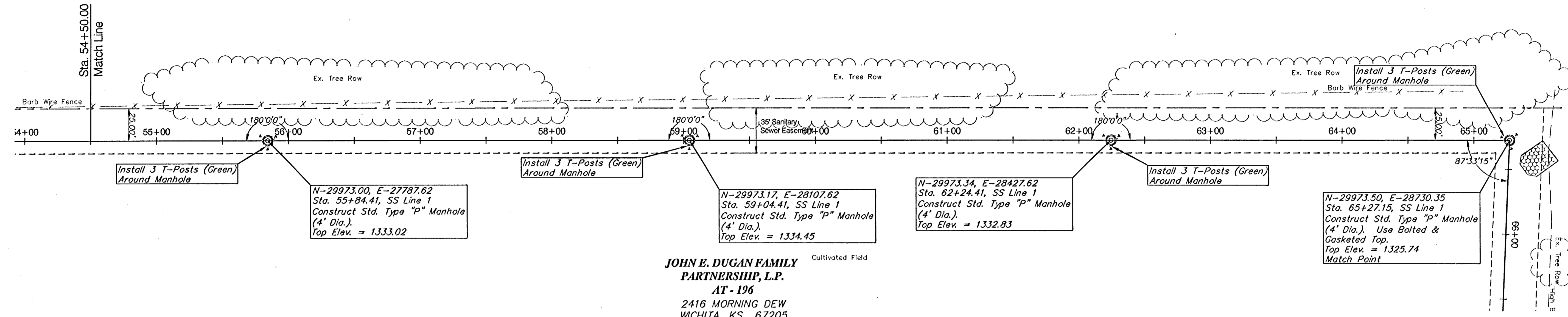


SCALE:  
1" = 40' HORIZONTAL  
1" = 5' VERTICAL



N-29973.00, E-27787.62  
Sta. 55+84.41, SS Line 1  
Construct Std. Type "P" Manhole  
(4' Dia.)  
Top Elev. = 1333.02

N-29973.17, E-28107.62  
Sta. 59+04.41, SS Line 1  
Construct Std. Type "P" Manhole  
(4' Dia.)  
Top Elev. = 1334.45

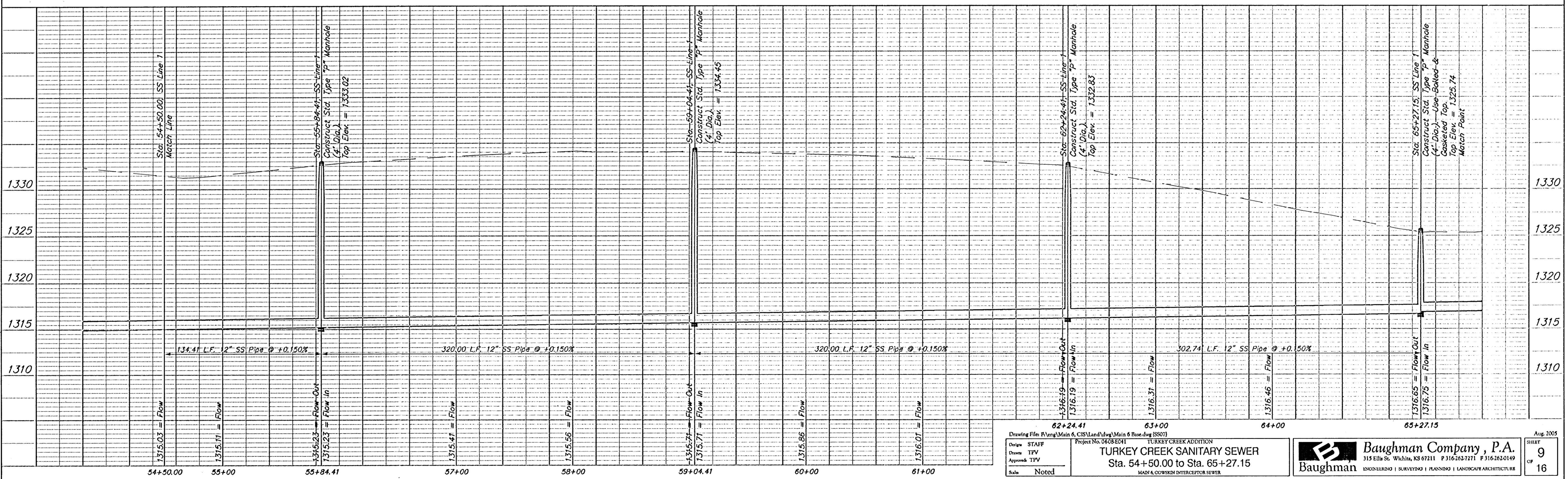
N-29973.34, E-28427.62  
Sta. 62+24.41, SS Line 1  
Construct Std. Type "P" Manhole  
(4' Dia.)  
Top Elev. = 1332.83

N-29973.50, E-28730.35  
Sta. 65+27.15, SS Line 1  
Construct Std. Type "P" Manhole  
(4' Dia.) Use Bolted &  
Gasketed Top.  
Top Elev. = 1325.74  
Match Point

**JOHN E. DUGAN FAMILY  
PARTNERSHIP, L.P.**  
AT - 196  
2416 MORNING DEW  
WICHITA, KS 67205

SE 1/4, Section 36, Twp 27-S, R 2-W

The Contractor shall have the option of replacing the three (3) T-Posts with one (1) Fiberglass Marking Post (Green) as supplied by In Stock Now! Inc. (888) 547-4477, or approved equal. Cost of the T-Posts or Fiberglass Marker shall not be paid for directly, but shall be considered **INCIDENTAL** to the Manhole Construction.



Drawing File: P:\eng\Main 6\_CIS\Land\dog\Main 6 Base.dwg (8/20/07)  
Project No. 0408-0341  
**TURKEY CREEK ADDITION**  
**TURKEY CREEK SANITARY SEWER**  
Sta. 54+50.00 to Sta. 65+27.15  
MAIN & COOPER INTERCEPTOR SEWER

**Baughman Company, P.A.**  
315 Ellis St., Wichita, KS 67211 P 316-262-7271 F 316-262-0149  
ENGINEERING | SURVEYING | PLANNING | LANDSCAPE ARCHITECTURE

Aug 2005  
SHEET 9 OF 16