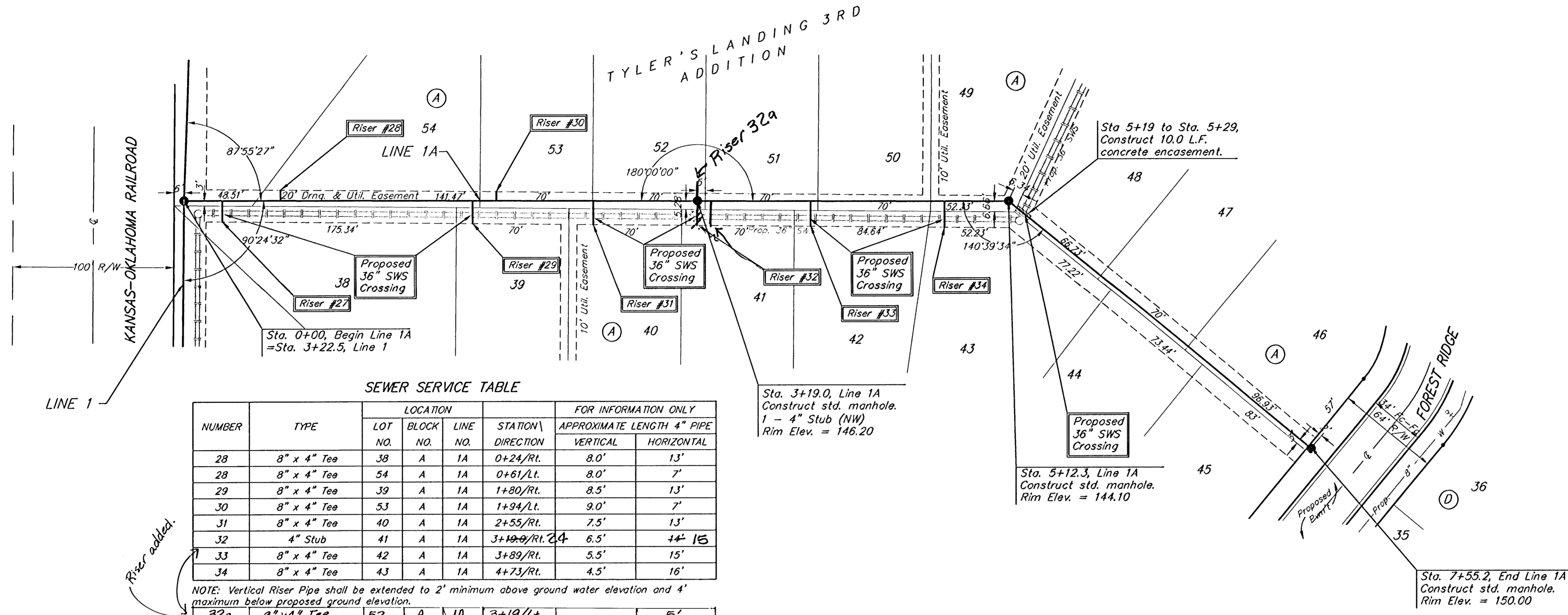


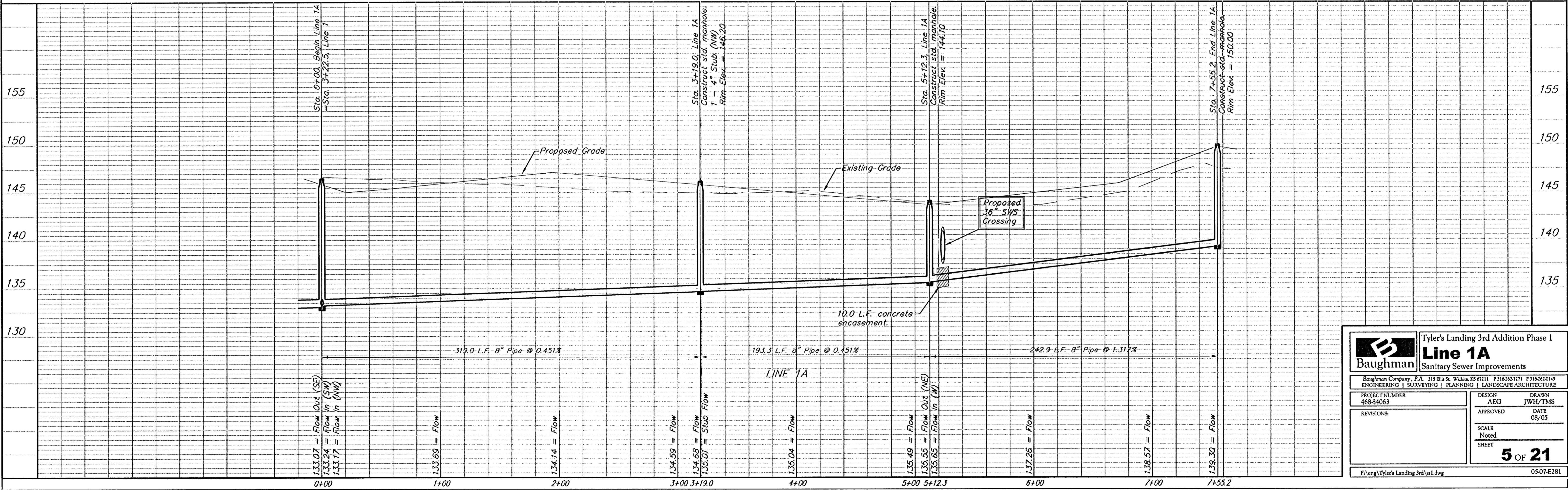
**Benchmarks:**  
 BM #1: "x" on the West End of the Steel Casing Pipe at the Railroad Crossing South of 37th Street North Sta. 25+90, 41' Rt. Elev. = 149.18 (1336.58 MSL)  
 BM #2: Steel T-Post Driven 4' Deep Sta. 18+00, 25' Rt. Elev. = 150.33 (1337.73 MSL)  
 BM #3: "□" in the Concrete Footing of the SBC Pedestal in the South West Corner of 37th Street North and Tyler Road Sta. 8+56, 95' Rt. Elev. = 154.77 (1342.17 MSL)  
 BM #4: Railroad Spike in the East Face of the 2nd Power Pole North of 37th Street and West of Tyler Road Sta. 94+24, 48' Lt. Elev. = 155.45 (1342.85 MSL)



**SEWER SERVICE TABLE**

NUMBER	TYPE	LOCATION				FOR INFORMATION ONLY	
		LOT NO.	BLOCK NO.	LINE NO.	STATION DIRECTION	APPROXIMATE LENGTH 4" PIPE VERTICAL	HORIZONTAL
28	8" x 4" Tee	38	A	1A	0+24/Rt.	8.0'	13'
29	8" x 4" Tee	39	A	1A	1+80/Rt.	8.5'	13'
30	8" x 4" Tee	53	A	1A	1+94/Lt.	9.0'	7'
31	8" x 4" Tee	40	A	1A	2+55/Rt.	7.5'	13'
32	4" Stub	41	A	1A	3+19.0/Rt. 24	6.5'	15'
33	8" x 4" Tee	42	A	1A	3+89/Rt.	5.5'	15'
34	8" x 4" Tee	43	A	1A	4+73/Rt.	4.5'	16'
32a	8" x 4" Tee	52	A	1A	3+19/Lt.	5'	

NOTE: Vertical Riser Pipe shall be extended to 2' minimum above ground water elevation and 4' maximum below proposed ground elevation.



**Tyler's Landing 3rd Addition Phase 1**  
**Line 1A**  
 Sanitary Sewer Improvements

**Baughman** Engineering & Surveying | Planning | Landscaping & Architecture

PROJECT NUMBER: 46834063  
 DESIGN: AEG  
 DRAWN: JWH/TMS  
 APPROVED: [Signature]  
 DATE: 08/05  
 SCALE: Noted  
 SHEET: 5 OF 21

F:\eng\Tyler's Landing 3rd\sa1.dwg 0507.E281