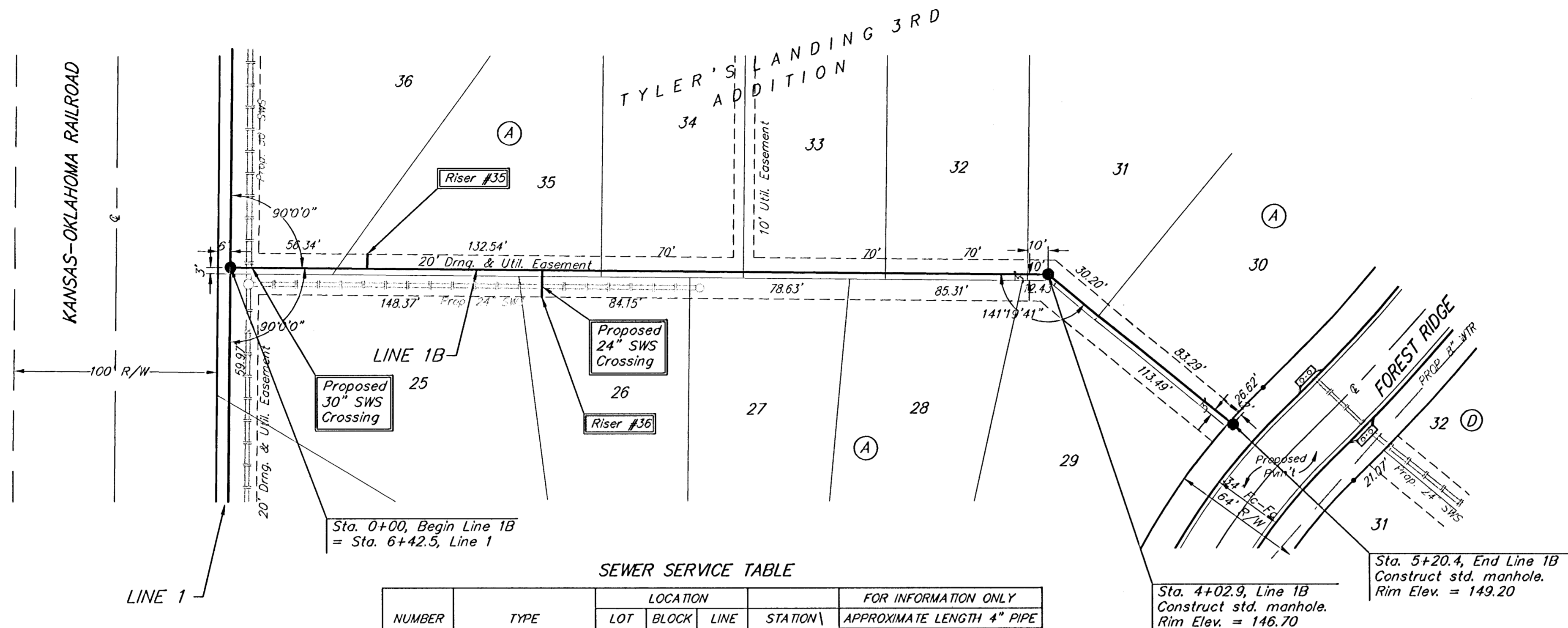


Benchmarks:
 BM #1: "X" on the West End of the Steel Casing Pipe at the Railroad Crossing South of 37th Street North Sta. 25+90, 41' Rt. Elev. = 149.18 (1336.58 MSL)
 BM #2: Steel T-Post Driven 4' Deep Sta. 18+00, 25' Rt. Elev. = 150.33 (1337.73 MSL)
 BM #3: "C" in the Concrete Footing of the SBC Pedestal in the South West Corner of 37th Street North and Tyler Road Sta. 8+56, 95' Rt. Elev. = 154.77 (1342.17 MSL)
 BM #4: Railroad Spike in the East Face of the 2nd Power Pole North of 37th Street and West of Tyler Road Sta. 94+24, 48' Lt. Elev. = 155.45 (1342.85 MSL)

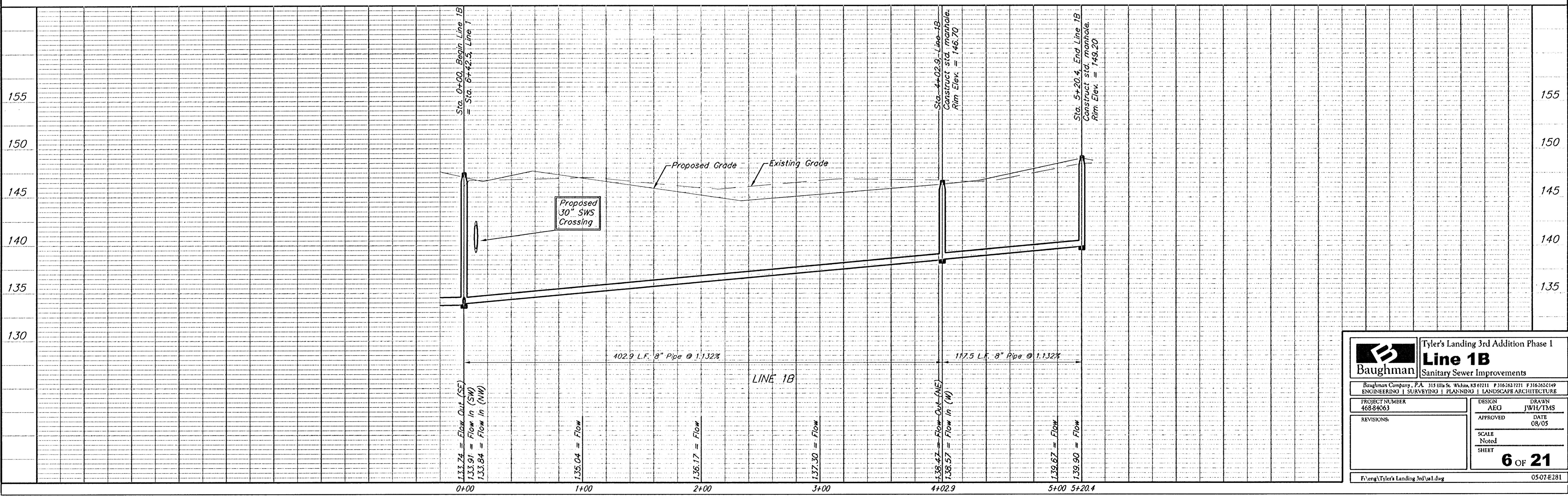


Scale: 1" = 40' Horizontal
 1" = 5' Vertical
 • = Iron

SEWER SERVICE TABLE

NUMBER	TYPE	LOCATION			FOR INFORMATION ONLY		
		LOT NO.	BLOCK NO.	LINE NO.	STATION\ DIRECTION	APPROXIMATE LENGTH 4" PIPE	
					VERTICAL	HORIZONTAL	
35	8" x 4" Tee	35	A	1B	0+67/Lt. 60	9.0'	7'
36	8" x 4" Tee	26	A	1B	1+54/Rt.	6.0'	13'

NOTE: Vertical Riser Pipe shall be extended to 2' minimum above ground water elevation and 4' maximum below proposed ground elevation.



	Tyler's Landing 3rd Addition Phase 1	
	Line 1B Sanitary Sewer Improvements	
Baughman Company, P.A. 315 Ellis St. Wichita, KS 67211 P 316-262-7711 F 316-262-6149 ENGINEERING SURVEYING PLANNING LANDSCAPE ARCHITECTURE		
PROJECT NUMBER 468-84063	DESIGN AEG	DRAWN JWHL/TMS
REVISIONS:	APPROVED	DATE 08/05
	SCALE Noted	SHEET 6 OF 21
F:\eng\Tyler's Landing 3rd\sa1.dwg		05-07-E281