

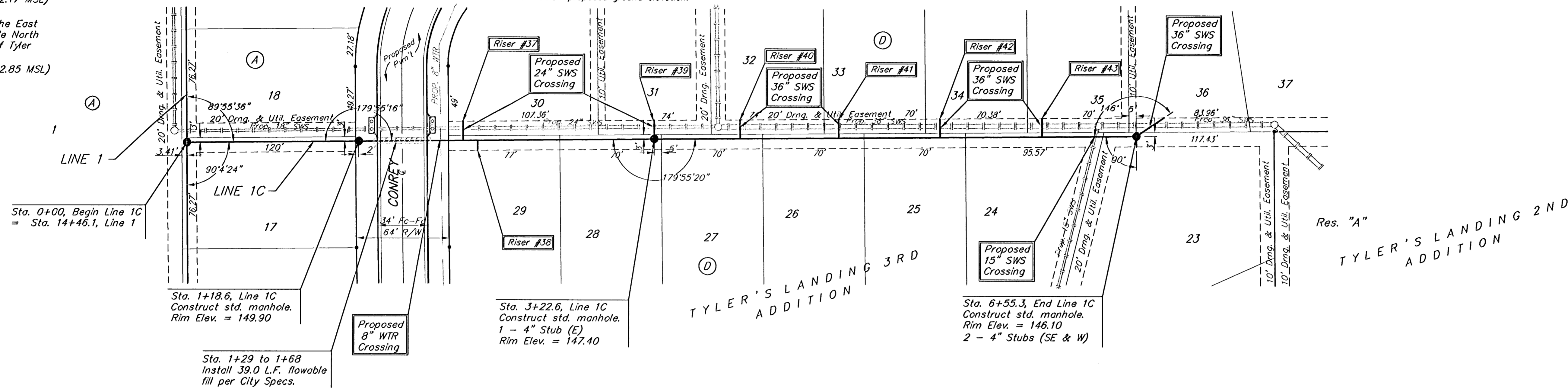
Benchmarks:
 BM #1: "X" on the West End of the Steel Casing Pipe at the Railroad Crossing South of 37th Street North Sta. 25+90, 41' Rt. Elev. = 149.18 (1336.58 MSL)
 BM #2: Steel T-Post Driven 4' Deep Sta. 18+00, 25' Rt. Elev. = 150.33 (1337.73 MSL)
 BM #3: "□" in the Concrete Footing of the SBC Pedestal in the South West Corner of 37th Street North and Tyler Road Sta. 8+56, 95' Rt. Elev. = 154.77 (1342.17 MSL)

BM #4: Railroad Spike in the East Face of the 2nd Power Pole North of 37th Street and West of Tyler Road Sta. 94+24, 48' Lt. Elev. = 155.45 (1342.85 MSL)

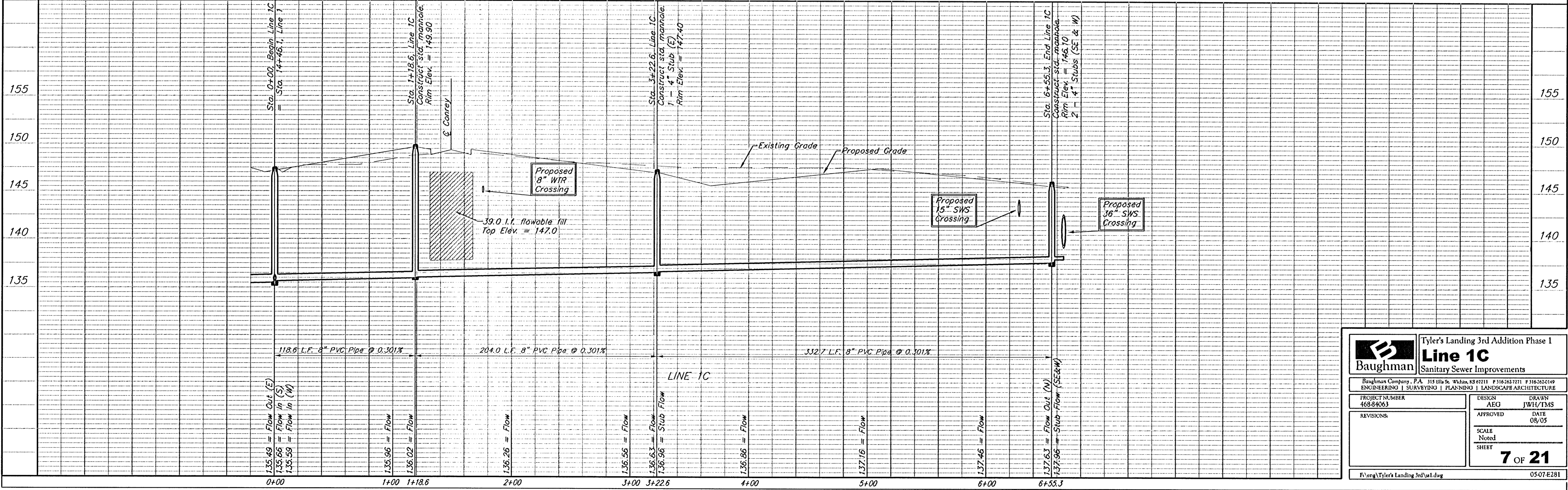
SEWER SERVICE TABLE

NUMBER	TYPE	LOCATION				FOR INFORMATION ONLY	
		LOT NO.	BLOCK NO.	LINE NO.	STATION DIRECTION	APPROXIMATE LENGTH 4" PIPE	
						VERTICAL	HORIZONTAL
37	8" x 4" Tee	30	D	1C	1+91/Lt.	8.5'	13'
38	8" x 4" Tee	29	D	1C	2+01/Rt.	8.5'	7'
39	4" Stub	31	D	1C	3+22.6/Lt.	6.0'	13'
40	8" x 4" Tee	32	D	1C	3+82/Lt.	5.0'	13'
41	8" x 4" Tee	33	D	1C	4+50/Lt.	5.5'	13'
42	8" x 4" Tee	34	D	1C	5+20/Lt.	6.0'	13'
43	8" x 4" Tee	35	D	1C	5+90/Lt.	4.5'	13'

NOTE: Vertical Riser Pipe shall be extended to 2' minimum above ground water elevation and 4' maximum below proposed ground elevation.



Scale: 1" = 40' Horizontal
 1" = 5' Vertical
 • = Iron



Baughman Tyler's Landing 3rd Addition Phase 1
Line 1C
 Sanitary Sewer Improvements

Baughman Company, P.A. 315 Ellis St. Wichita, KS 67211 P 316-263-7211 F 316-263-0149
 ENGINEERING | SURVEYING | PLANNING | LANDSCAPE ARCHITECTURE

PROJECT NUMBER: 468-04063 DESIGN: AEO DRAWN: JWH/TMS
 APPROVED: DATE: 08/05
 REVISIONS: SCALE: Noted SHEET: 7 OF 21

F:\eng\Tyler's Landing 3rd\w1.dwg 0507E281