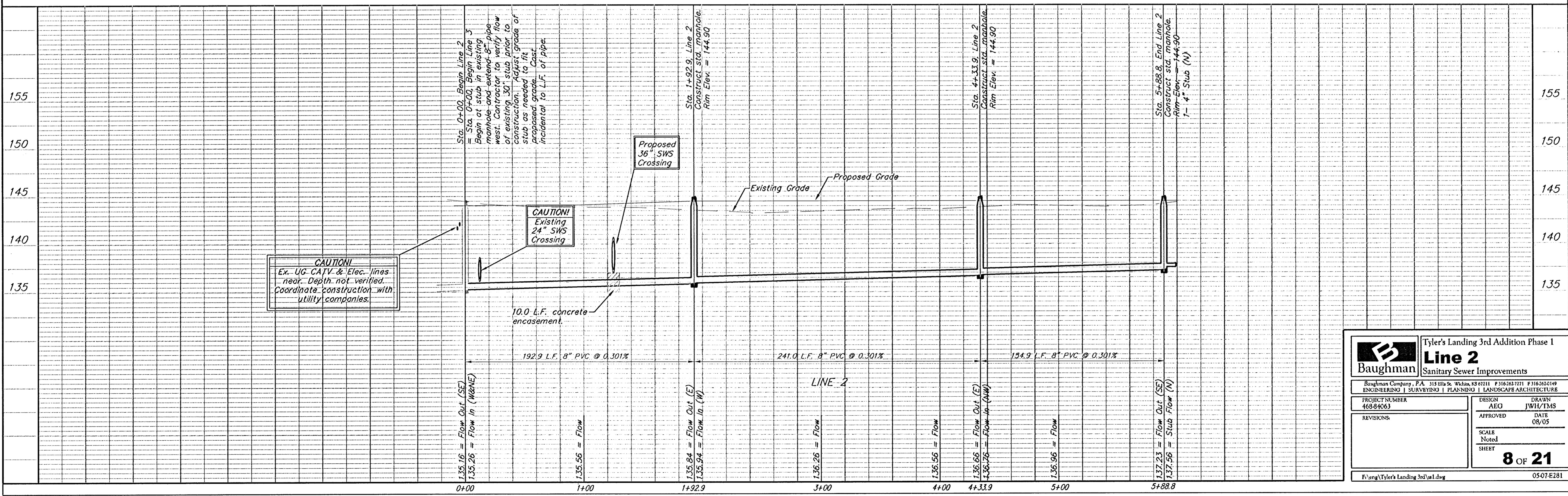
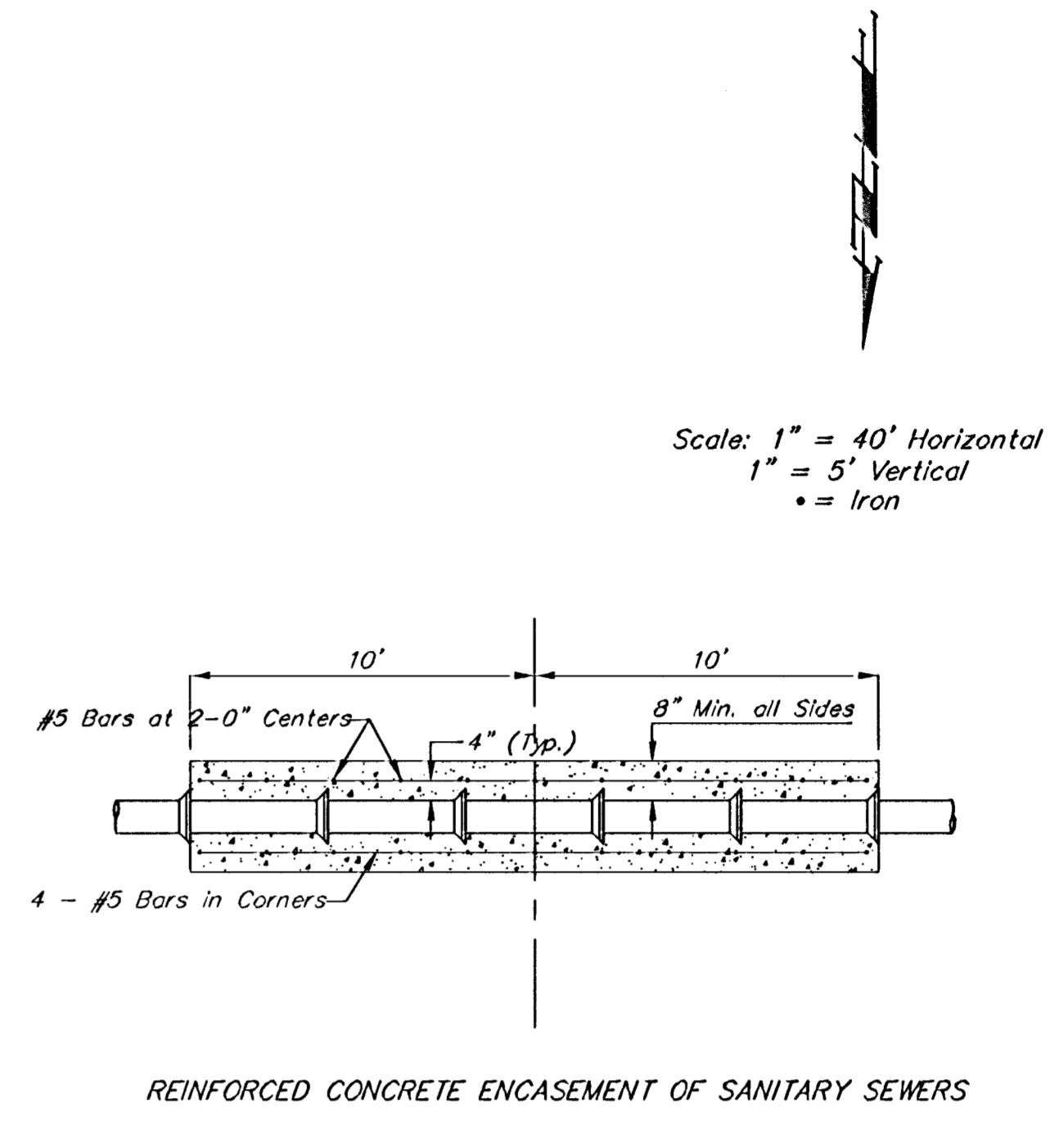
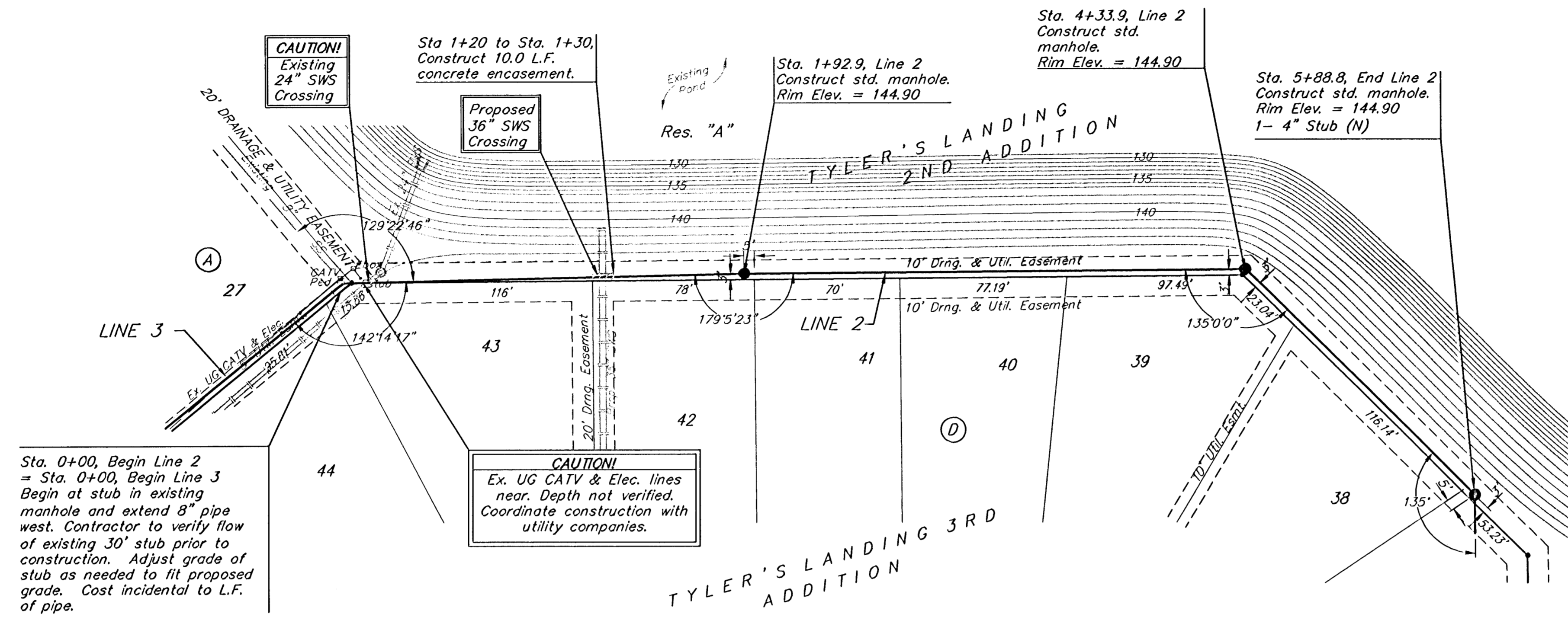


Benchmarks:
 BM #1: "X" on the West End of the Steel Casing Pipe at the Railroad Crossing South of 37th Street North Sta. 25+90, 41' Rt. Elev. = 149.18 (1336.58 MSL)
 BM #2: Steel T-Post Driven 4' Deep Sta. 18+00, 25' Rt. Elev. = 150.33 (1337.73 MSL)
 BM #3: "C" in the Concrete Footing of the SBC Pedestal in the South West Corner of 37th Street North and Tyler Road Sta. 8+56, 95' Rt. Elev. = 154.77 (1342.17 MSL)
 BM #4: Railroad Spike in the East Face of the 2nd Power Pole North of 37th Street and West of Tyler Road Sta. 94+24, 48' Lt. Elev. = 155.45 (1342.85 MSL)



Baughman		Tyler's Landing 3rd Addition Phase 1	
Line 2		Sanitary Sewer Improvements	
<small>Baughman Company, P.A. 115 5th St., Weirton, WV 26061 F 316342711 F 316342149 ENGINEERING SURVEYING PLANNING LANDSCAPE ARCHITECTURE</small>			
PROJECT NUMBER 468-84063	DESIGN AEG	DRAWN JWH/TMS	APPROVED DATE 08/05
REVISIONS:	SCALE Noted SHEET		
8 OF 21			
F:\eng\Tyler's Landing 3rd\sl.dwg			0507E281