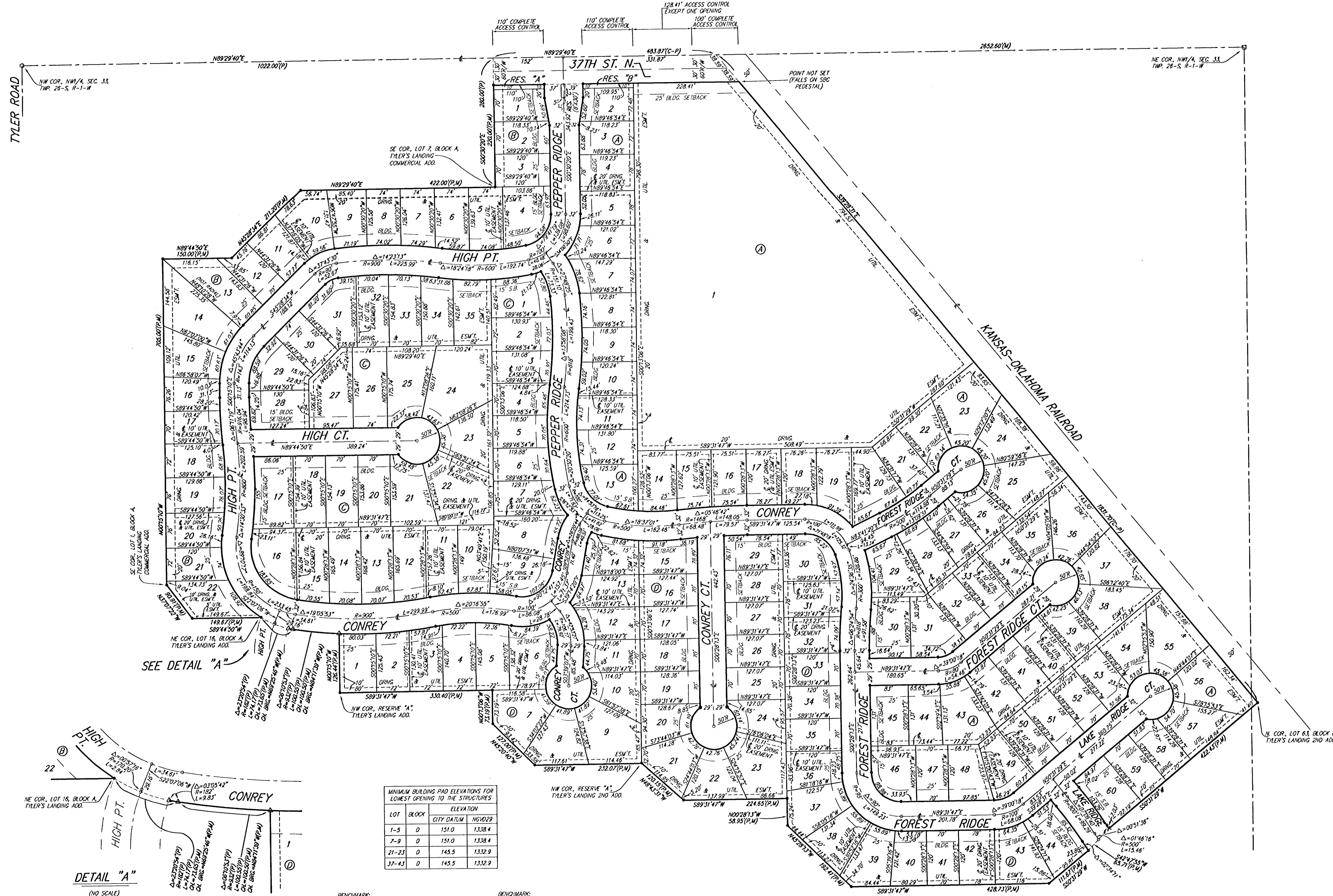
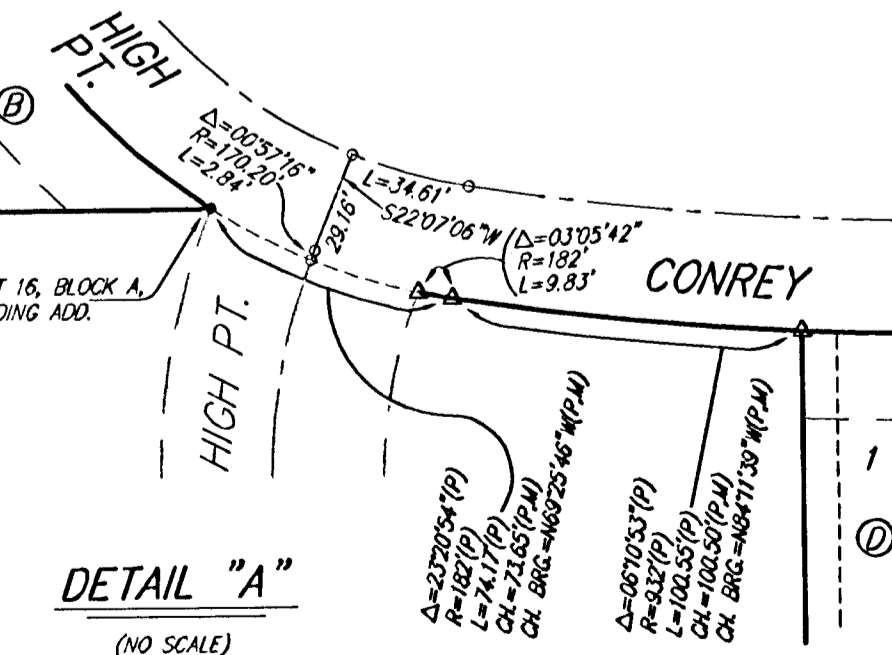


TYLER'S LANDING 3RD ADDITION

WICHITA, SEDGWICK COUNTY, KANSAS



- = #4 REBAR W/ 'BAUGHMAN' CAP (SET)
 - + = CROSS (SET)
 - = 3/4" ROD (FOUND)
 - = #5 REBAR (FOUND)
 - △ = #4 REBAR W/ 'SS550' CAP (FOUND)
- (M) = MEASURED
(P) = PLATED
(C-P) = CALCULATED PER PLATED INFO.



MINIMUM BUILDING PAD ELEVATIONS FOR LOWEST OPENING TO THE STRUCTURES		
LOT	BLOCK	ELEVATION
1-5	D	151.0
7-9	D	151.0
21-23	D	145.5
37-43	D	145.5

BENCHMARK:
3" BRASS DISC ON TOP OF CURB AT NORTHEAST END OF CURB RETURN, NORTHEAST CORNER OF THE INTERSECTION OF LAKE RIDGE AND LAKE RIDGE CT., TYLER'S LANDING 2ND ADD.
BRASS DISC IS SOUTH OF FIRE HYDRANT.
BRASS DISC IS SOUTHWEST OF THE MOST SOUTHERLY CORNER OF LOT 87, BLOCK B, IN SAID TYLER'S LANDING 2ND ADD.
ELEV. = 1332.27 NGVD29
(145.37 CITY DATUM)

BENCHMARK:
3" BRASS DISC ON TOP OF NORTH CURB ON 34TH STREET NORTH IN TYLER'S LANDING 2ND ADD.
BRASS DISC IS SOUTH OF THE SOUTH LOT CORNER CORNER TO LOTS 7 AND 8, BLOCK A, IN SAID TYLER'S LANDING 2ND ADD.
ELEV. = 1335.64 NGVD29
(148.24 CITY DATUM)

NOTE:
A master grading plan for drainage has been developed for this subdivision and is on file with the City of Wichita, Kansas. All drainage easements, rights-of-way, or reserves shall remain established grades or as modified with the approval of the City Engineer of the City of Wichita, Kansas. No obstructions which impede the flow of this drainage system shall be allowed.

NOTE:
A drainage plan has been developed for this subdivision and is on file with the City of Wichita, Kansas. Grading intent shall remain as depicted or as modified with the approval of the City Engineer of the City of Wichita, Kansas. No obstructions which impede the flow of this drainage plan shall be allowed.

Baughman Company, P.A.
 315 E. 15th St., Wichita, KS 67211 P 316.262.7111 F 316.262.0149
ENGINEERING | SURVEYING | PLANNING | LANDSCAPE ARCHITECTURE
 PLATT/TYLER'S LANDING 3RD ADDITION/3RD ADDITION