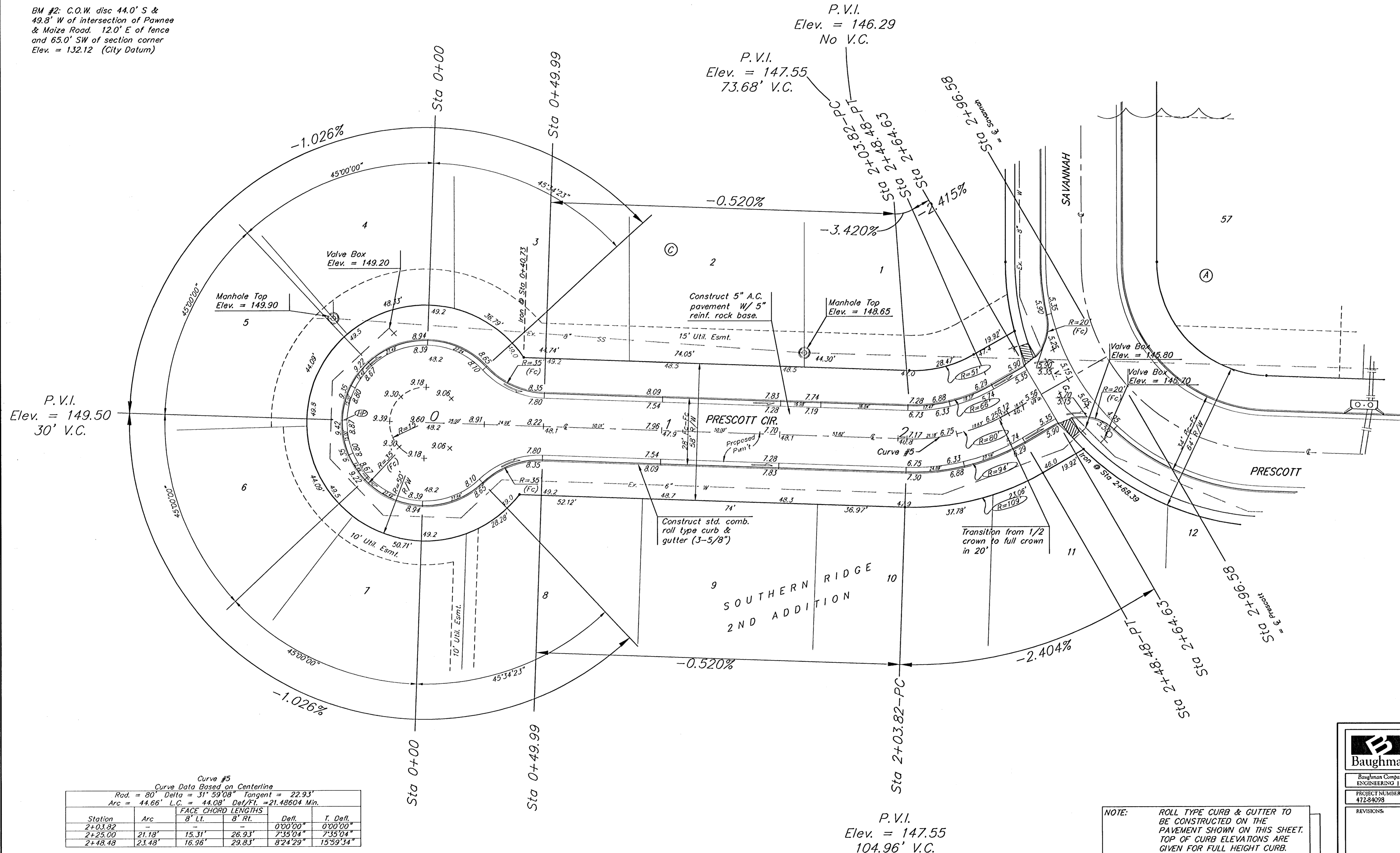


BENCHMARK:
 BM #1: C.O.W. disc in curb adjacent to fire hydrant near SE corner of Lot 18, Block B, Southern Ridge 2nd Addition. Elev. = 144.10 (City Datum)

BM #2: C.O.W. disc 44.0' S & 49.8' W of intersection of Pawnee & Maize Road. 12.0' E of fence and 65.0' SW of section corner. Elev. = 132.12 (City Datum)

Scale: 1" = 20'
 • = Iron



Curve #5
 Curve Data Based on Centerline

Rad. = 80' Delta = 31° 59' 08" Tangent = 22.93'				
Arc = 44.66' L.C. = 44.08' Del/FT. = 21.48604 Min.				
Station	Arc	FACE CHORD LENGTHS	Defl.	T. Defl.
		B' Lt.	B' Rt.	
2+03.82	-	-	-	0°00'00"
2+25.00	21.18'	15.31'	26.93'	7°35'04"
2+48.48	23.48'	16.96'	29.83'	15°59'34"

NOTE: ROLL TYPE CURB & GUTTER TO BE CONSTRUCTED ON THE PAVEMENT SHOWN ON THIS SHEET. TOP OF CURB ELEVATIONS ARE GIVEN FOR FULL HEIGHT CURB.

Baughman SOUTHERN RIDGE 2ND ADD. - PH II
PRESCOTT CIR.
 STA 0+00 TO STA 2+96.58

Baughman Company, P.A. 315 Ellis St. Wichita, KS 67211 P 3162627171 F 3162620149
 ENGINEERING | SURVEYING | PLANNING | LANDSCAPE ARCHITECTURE

PROJECT NUMBER 472-84098	DESIGN AEG	DRAWN TMS
REVISIONS	APPROVED	DATE 10/05
	SCALE Noted	SHEET 12 OF 29

SouthernRidge2nd\PhaseII\Sst7 05-09-B350