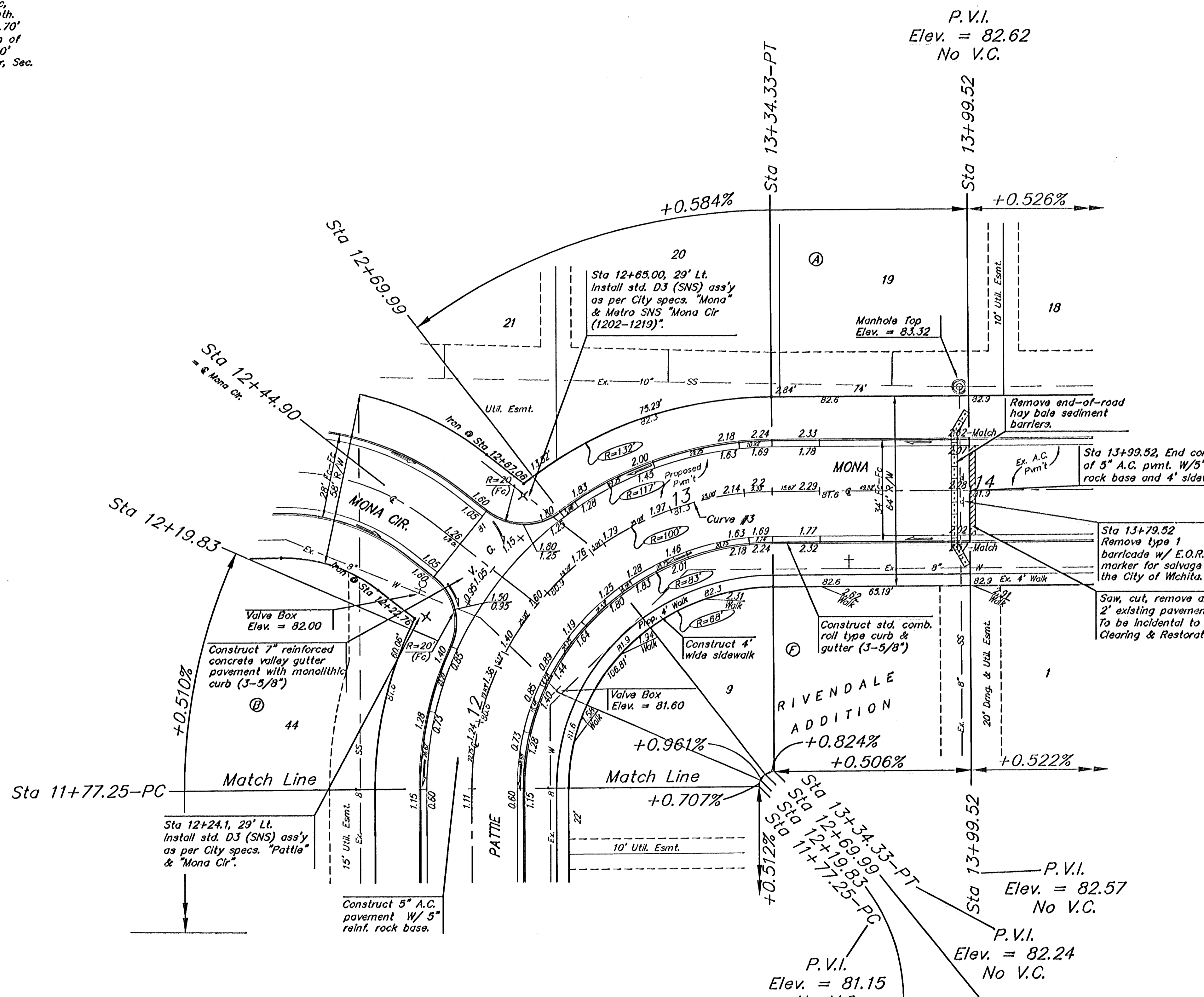
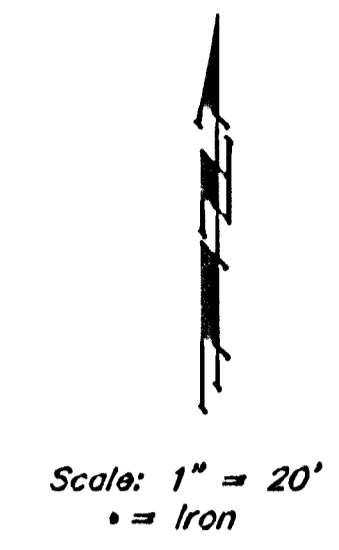


Benchmark:
 City of Wichita Benchmark Disc,
 Hydraulic and 55th Street South,
 42.00' North of Centerline, 40.70'
 West of Centerline, 3.70' North of
 centerline of Power Pole, 58.20'
 Northwest of Southeast Corner, Sec.
 21, Twp. 28-S, R-1-E.
 Elev. = 76.19 City Datum
 Elev. = 1263.59 (NGVD29)



Curve #3
 Curve Data Based on Centerline
 Rad. = 100' Delta = 90°00'00" Tangent = 100.00'
 Arc = 157.08' L.C. = 141.42' Def/Ft. = 17.18869 Min.

Station	Arc	FACE CHORD LENGTHS		Def.	T. Def.
		8" Lt.	8" Rt.		
11+77.25	-	-	-	0°00'00"	0°00'00"
12+00.00	22.75'	27.92'	17.48'	6°51'02"	6°51'02"
12+19.83	19.83'	24.35'	15.24'	5°40'51"	12°11'53"
12+44.90	25.07'	30.76'	19.25'	7°10'53"	19°22'49"
12+69.99	25.09'	30.78'	19.27'	7°11'16"	26°34'03"
12+75.00	5.01'	6.16'	3.86'	1°26'07"	28°00'11"
13+00.00	25.00'	30.67'	19.20'	7°09'43"	35°09'55"
13+25.00	25.00'	30.67'	19.20'	7°09'43"	42°19'58"
13+34.33	9.33'	11.47'	7.18'	2°40'22"	45°00'00"

Subdivision Bench Marks

Street & Station	Location Description	Elevation
Pattie Ct. J+54.24, 14.25' Lt.	Adjacent to Fire Hydrant at the Southeast corner of Lot 43, Block B	
Mona Cir. J+05.54, 14.25' Rt.	Adjacent to Fire Hydrant at the Northeast corner of Lot 44, Block B	
Victoria Ct. O+37.00, 14.25' Rt.	Adjacent to Fire Hydrant at the Northwest corner of Lot 23, Block C	

NOTE: ROLL TYPE CURB & GUTTER TO BE CONSTRUCTED ON THE PAVEMENT SHOWN ON THIS SHEET. TOP OF CURB ELEVATIONS ARE GIVEN FOR FULL HEIGHT CURB.

Baughman RIVENDALE ADDITION - PHASE II
MONA STA 11+77.25 TO STA 13+99.52

Baughman Company, P.A. 315 Ellis St. Wichita, KS 67211 P.316.262.7771 F.316.262.4149
 ENGINEERED TO SURVEYING & PLANNING | LANDSCAPE ARCHITECTURE

PROJECT NUMBER 472-81867	DESIGN MS	DRAWN TMS
REVISIONS	APPROVED	DATE 02/05
	SCALE Noted	
	SHEET	8 OF 28

Rivendale/Phase/2/3 0501E138