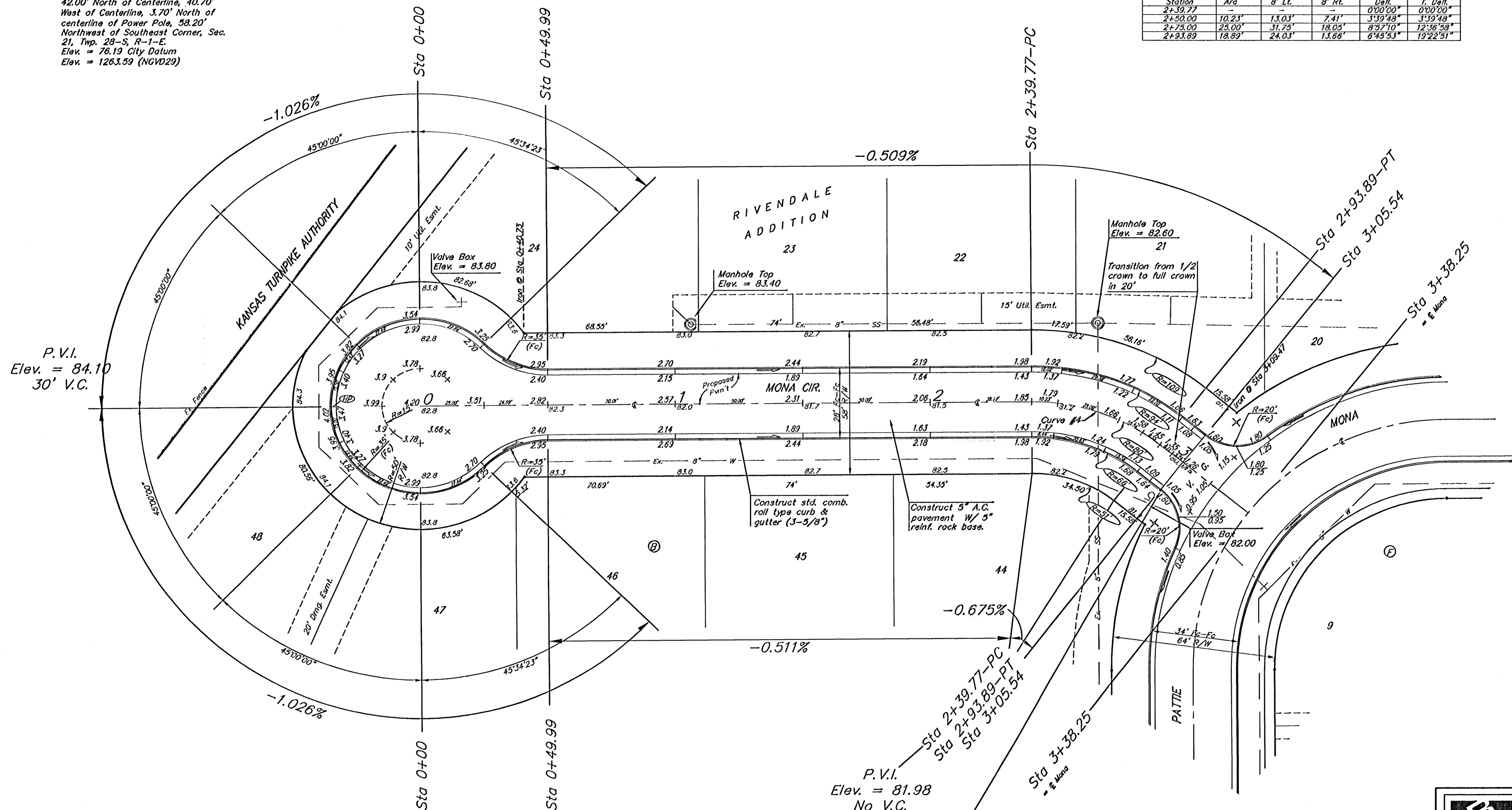
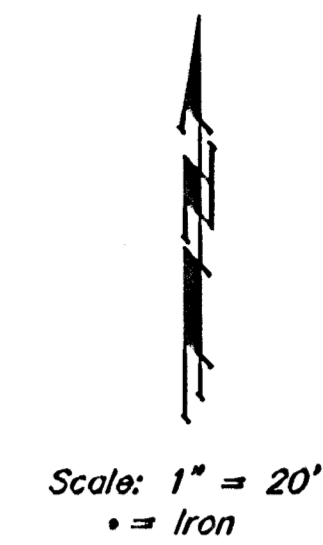


**Benchmark:**  
 City of Wichita Benchmark Disc,  
 Hydraulic and 55th Street South,  
 42.00' North of Centerline, 40.70'  
 West of Centerline, 3.70' North of  
 centerline of Power Pole, 58.20'  
 Northwest of Southeast Corner, Sec.  
 21, Twp. 28-S, R-1-E.  
 Elev. = 78.19 City Datum  
 Elev. = 1263.59 (NGVD29)

Curve #4  
 Curve Data Based on Centerline  
 Rad. = 80' Delta = 38° 45' 43" Tangent = 28.14'  
 Arc = 54.12' L.C. = 53.10' Def/Ft. = 21.48667 Min.

Station	Arc	FACE CHORD LENGTHS		Def.	r. Def.
		8' Lt.	8' Rt.		
2+39.77	-	-	-	0'00"00"	0'00"00"
2+50.00	10.23'	13.03'	7.41'	3'39"48"	3'39"48"
2+75.00	25.00'	31.75'	18.05'	8'57"10"	12'36"58"
2+93.89	18.89'	24.03'	13.66'	6'45"53"	19'22"51"



Sta 3+05.54, 14.25' Rt.  
 Install subdivision benchmark  
 (Flat survey marker No.  
 8134-08 3" top diameter) in  
 top of curb. Cost shall be  
 incidental to L.F. curb &  
 gutter.

**NOTE:** ROLL TYPE CURB & GUTTER TO BE CONSTRUCTED ON THE PAVEMENT SHOWN ON THIS SHEET. TOP OF CURB ELEVATIONS ARE GIVEN FOR FULL HEIGHT CURB.

Subdivision Bench Marks

Street & Station	Location Description	Elevation
Pattie Ct. 3+54.24, 14.25' Lt.	Adjacent to Fire Hydrant at the Southeast corner of Lot 43, Block B	
Mona Cir. 3+05.54, 14.25' Rt.	Adjacent to Fire Hydrant at the Northeast corner of Lot 44, Block B	
Victoria Ct. 0+37.00, 14.25' Rt.	Adjacent to Fire Hydrant at the Northwest corner of Lot 25, Block C	

	RIVENDALE ADDITION - PHASE II	
	<b>MONA CIR.</b> STA 0+00 TO STA 3+38.25	
Baughman Company, P.A. 315 Ellis St. Wichita, KS 67211 P 316-262-7171 F 316-262-0149		
ENGINEERING   SURVEYING   PLANNING   LANDSCAPE ARCHITECTURE		
PROJECT NUMBER 472-83867	DESIGN MIS	DRAWN TMS
REVISIONS	APPROVED	DATE 02/05
	SCALE Noted	
	SHEET	<b>10 OF 28</b>
Rivendale/Phase/2/S15		05-01-E138