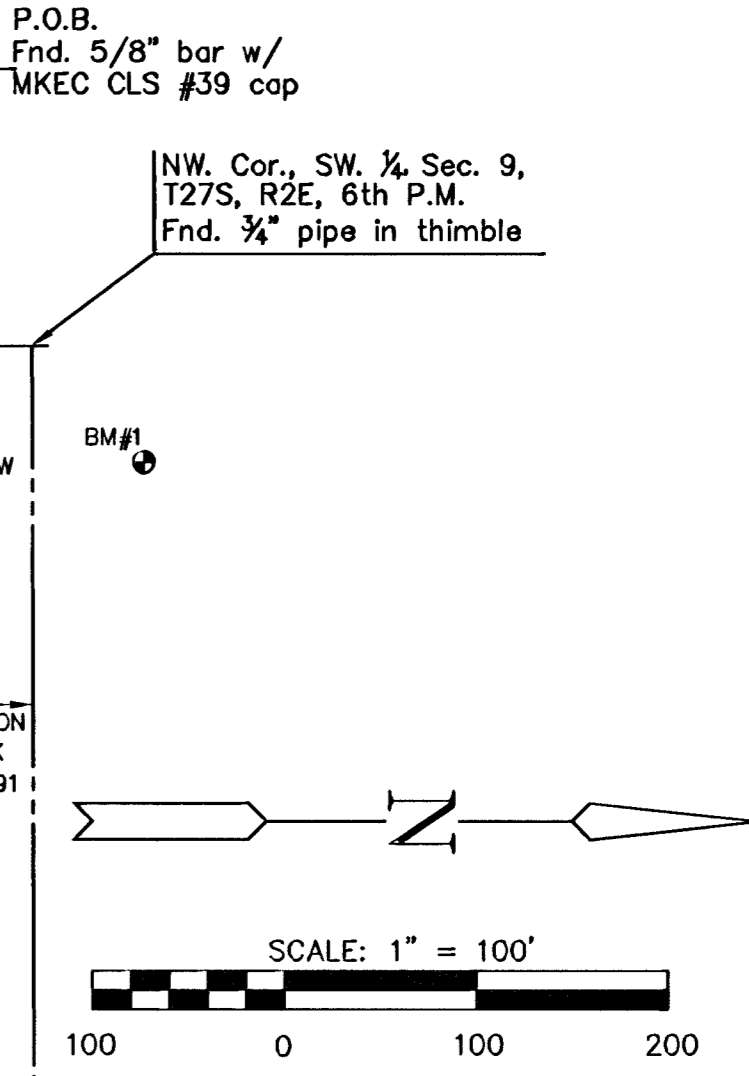
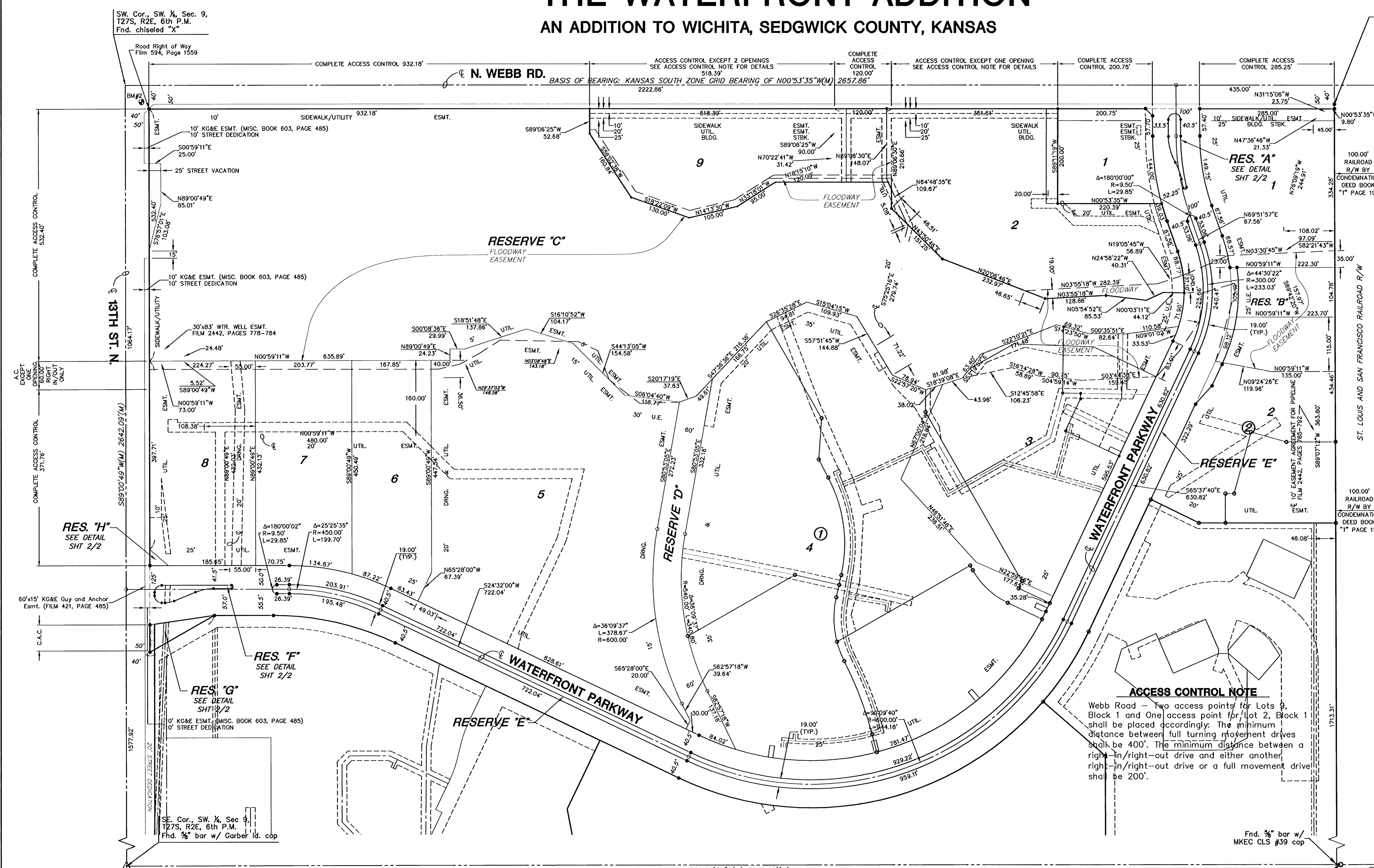


FINAL PLAT

THE WATERFRONT ADDITION

AN ADDITION TO WICHITA, SEDGWICK COUNTY, KANSAS



- LEGEND**
- △ = SECTION CORNER MONUMENT FOUND
 - ⊙ = FOUND PROPERTY CORNER REBAR
 - = SET 5/8" REBAR W/ MKEC CLS #39 CAP
 - B.S. = BUILDING SETBACK
 - U.E. = UTILITY EASEMENT
 - (M) = MEASURED DIMENSION
 - ▭ = STREET DEDICATION
 - ▨ = STREET VACATION

- BENCHMARKS**
- BM#1 Square cut SE. corner headwall 44' N. and 42' E. of W. 1/4 cor., Sec. 9, T27S, R2E ELEV. = 192.73' (City Datum) 1380.13 NGVD
- BM#2 Square cut SW. corner signal light pole base NE. corner Webb and 13th. ELEV. = 185.945' (City Datum) 1373.345' NGVD

| MINIMUM PAD ELEVATIONS (LOWEST OPENINGS) | | | |
|--|-------|------------------------|------------------|
| LOT | BLOCK | ELEVATION (CITY DATUM) | ELEVATION (NGVD) |
| 2 | 1 | 188.1 | 1375.5 |
| 3 | 1 | 188.1 | 1375.5 |
| 4 | 1 | 187.6 | 1375.0 |
| 5 | 1 | 187.6 | 1375.0 |
| 6 | 1 | 187.0 | 1374.4 |
| 7 | 1 | 187.0 | 1374.4 |
| 8 | 1 | 187.0 | 1374.4 |
| 9 | 1 | 187.0 | 1374.4 |
| 1 | 2 | 189.1 | 1376.5 |
| 2 | 2 | 189.1 | 1376.5 |

ACCESS CONTROL NOTE

Webb Road - Two access points for Lots 9, Block 1 and One access point for Lot 2, Block 1 shall be placed accordingly. The minimum distance between full turning movement drives shall be 400'. The minimum distance between a right-in/right-out drive and either another right-in/right-out drive or a full movement drive shall be 200'.

H:\CIVIL\2021\4\DMC\Locks\Spatial\North_Spatial\2021\4\DWG_08/17/2025_01:23:24_P.M_CST

H:\CIVIL\2021\4\DMC\Locks\Spatial\North_Spatial\2021\4\DWG_08/17/2025_01:23:24_P.M_CST