



© 2023 GARVER, LLC
 THIS DOCUMENT, ALONG WITH THE IDEAS AND DESIGNS CONVEYED HEREIN, SHALL BE CONSIDERED INSTRUMENTS OF PROFESSIONAL SERVICE AND ARE PROPERTY OF GARVER, LLC. ANY USE, REPRODUCTION, OR DISTRIBUTION OF THIS DOCUMENT, ALONG WITH THE IDEAS AND DESIGN CONTAINED HEREIN, IS PROHIBITED UNLESS AUTHORIZED IN WRITING BY GARVER, LLC OR EXPLICITLY ALLOWED IN THE GOVERNING PROFESSIONAL SERVICES AGREEMENT FOR THIS WORK.

1995 Midfield Road
 Wichita, KS 67209
 (316) 264-8008



REV.	DATE	DESCRIPTION

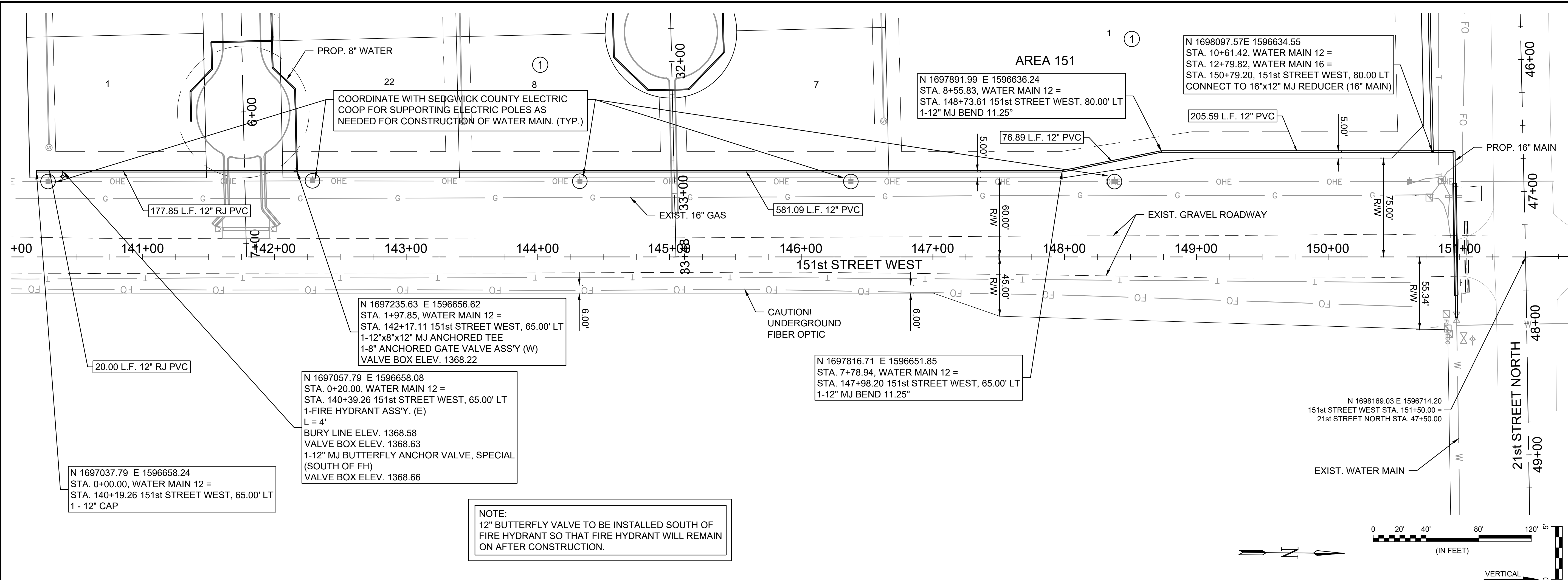


WATER MAIN-12

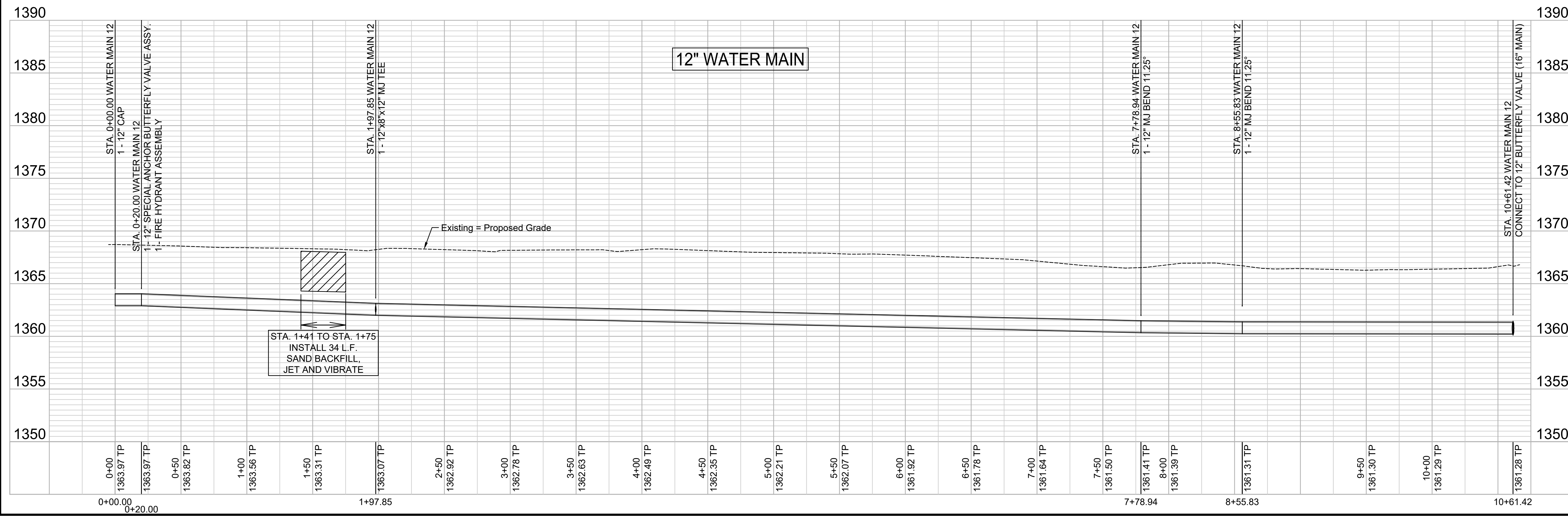
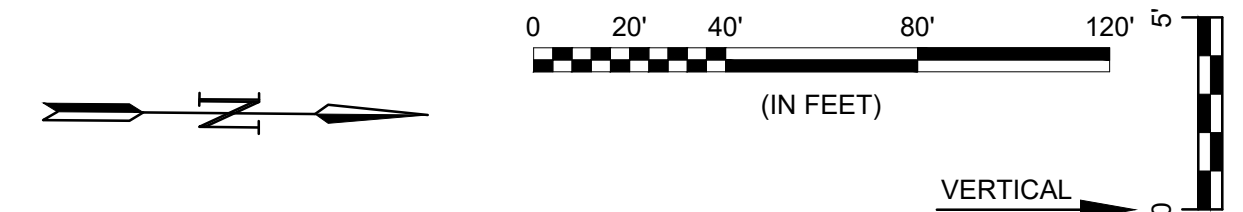
JOB NO.: 22T41002
 DATE: DEC. 2023
 DESIGNED BY: E.JG
 DRAWN BY: DRS

BAR IS ONE INCH ON ORIGINAL DRAWING
 IF NOT ONE INCH ON THIS SHEET, ADJUST SCALES ACCORDINGLY.

DRAWING NUMBER



NOTE:
 12" BUTTERFLY VALVE TO BE INSTALLED SOUTH OF FIRE HYDRANT SO THAT FIRE HYDRANT WILL REMAIN ON AFTER CONSTRUCTION.



File: L:\2022\22T41002 - Area 151 - AdditionalDrawings\CDD\WATER MAIN EXT SHEETS\WATER MAIN-12.dwg Last Save: 10/23/2023 2:22 PM Last saved by: DRSlandrich
 Last plotted by: Standrich, Daryl R. Plot Style: --- Plot Scale: 1:2.5849 Plot Date: 12/1/2023 9:51 AM Plotter used: None