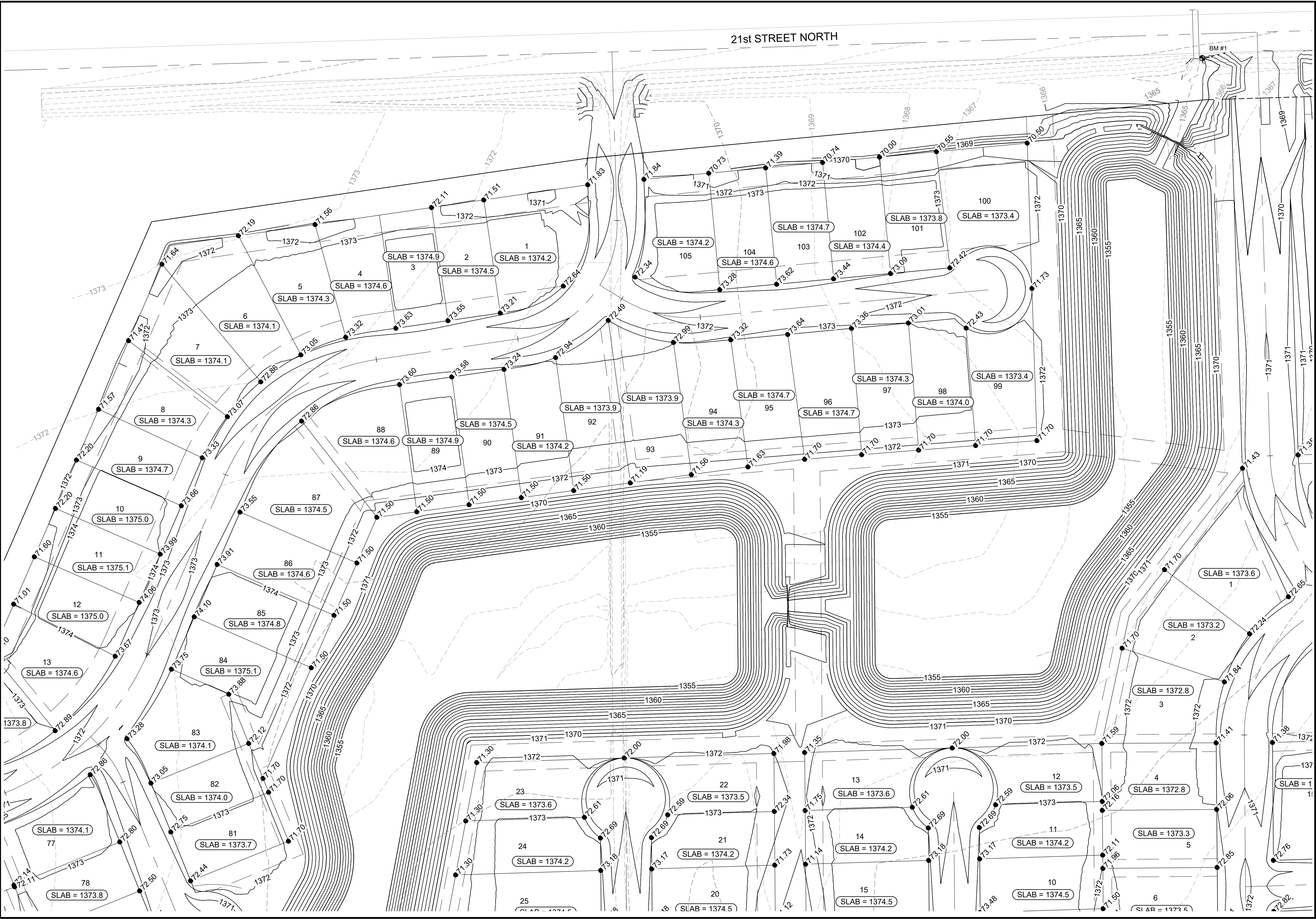


21st STREET NORTH



© 2023 GARVER, LLC
THIS DOCUMENT, ALONG WITH THE
IDEAS AND DESIGNS CONVEYED
HEREIN, SHALL BE CONSIDERED
INSTRUMENTS OF PROFESSIONAL
SERVICE AND ARE PROPERTY OF
GARVER, LLC. ANY USE,
REPRODUCTION, OR DISTRIBUTION
OF THIS DOCUMENT, ALONG WITH
THE IDEAS AND DESIGN CONTAINED
HEREIN, IS PROHIBITED UNLESS
AUTHORIZED IN WRITING BY
GARVER, LLC OR EXPLICITLY
ALLOWED IN THE GOVERNING
PROFESSIONAL SERVICES
AGREEMENT FOR THIS WORK.

1995 Midfield Road
Wichita, KS 67209
(316) 264-8008



File: L:\2022\22T41002 - Area 151 - Addition\Drawings\CADD\22T41002_4_Corner_Lot_Grading.dwg Last Save: 10/17/2023 5:14 PM Last saved by: DRStandrich
Last plotted by: Standrich, Darryl R. Plot Style: --- Plot Scale: 1:2.5849 Plot Date: 12/1/2023 8:08 AM Plotter used: None

REV.	DATE	DESCRIPTION	BY



CITY OF WICHITA
WICHITA, KANSAS
AREA 151
STORM WATER DRAIN - PHASE 1

4 CORNER
NORTH

JOB NO.: 22T41002
DATE: DEC 2023
DESIGNED BY: EJG
DRAWN BY: DRS

BAR IS ONE INCH ON ORIGINAL DRAWING
0" = 1" IF NOT ONE INCH ON THIS SHEET,
ADJUST SCALES ACCORDINGLY.

DRAWING NUMBER

SHEET NUMBER **76** OF **93**