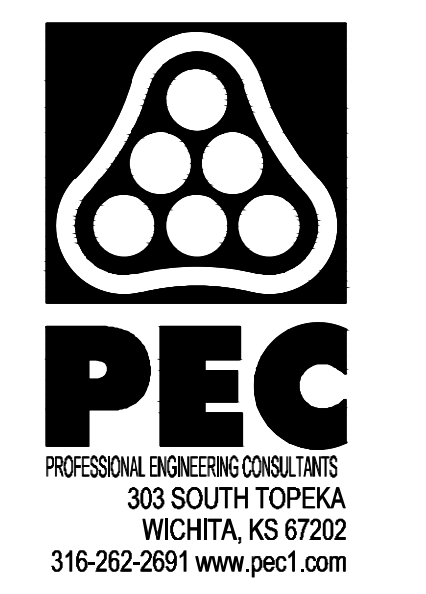
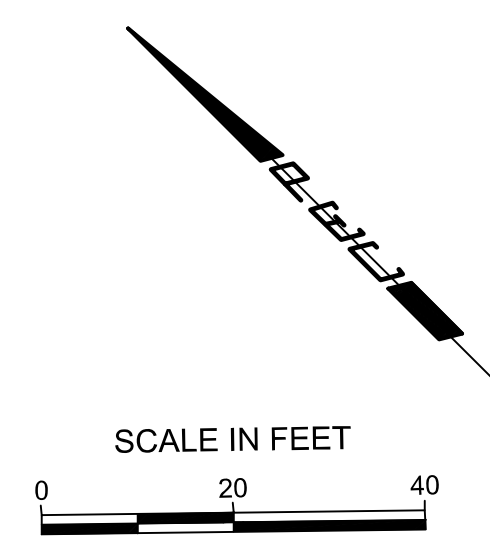
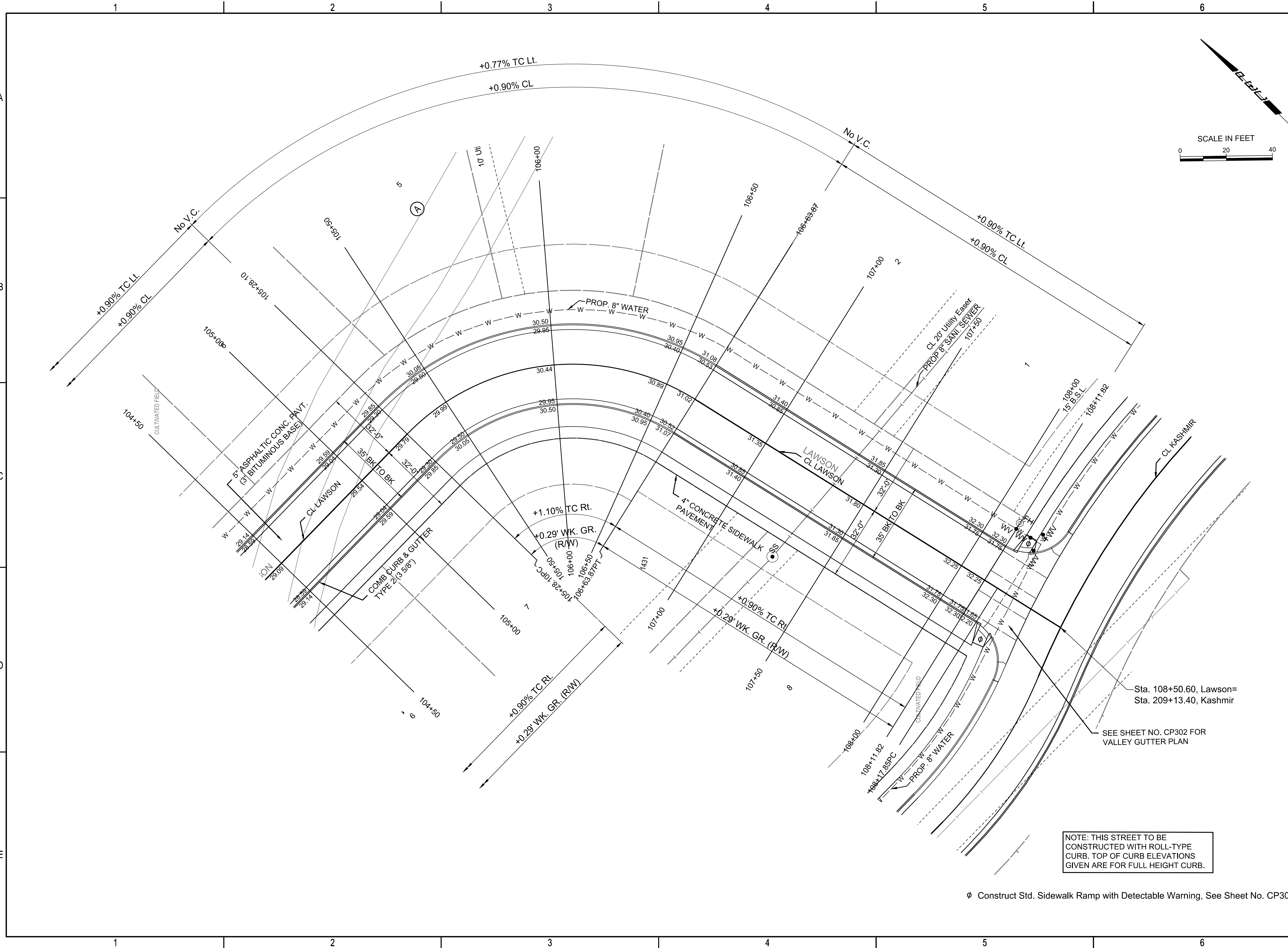


SAVED 10/9/2023 11:35:02 AM BY CARLOS.PEREZ
 PLOTTED 1/9/2024 4:23:15 PM BY BILL SEXSON
 U:\WICHITA-CIVIL\2021\210975001\PEC\DRAWINGS\10-210975-004-CP203-LAWSON PLAN.DWG



PAVING AND INCIDENTAL DRAINAGE IMPROVEMENTS
CYPRESS GLEN ADDITION-PHASE 1
 PAUL GUNZELMAN CITY ENGINEER
 CITY OF WICHITA PROJECT NO. 472-2023-085915

Issue:		

JOB NO.	210975-004
DATE	OCTOBER 2023
PM	RJS
DESIGNED BY	KMS
DRAWN BY	BJS
CHECKED BY	TPA

NOTE: THIS STREET TO BE CONSTRUCTED WITH ROLL-TYPE CURB. TOP OF CURB ELEVATIONS GIVEN ARE FOR FULL HEIGHT CURB.

∅ Construct Std. Sidewalk Ramp with Detectable Warning, See Sheet No. CP306

LAWSON PLAN
CP203
 10 OF 66