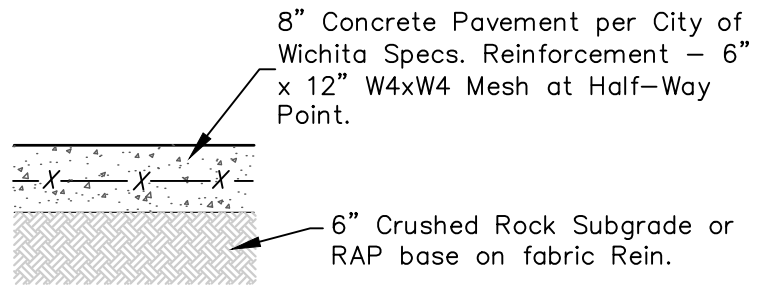
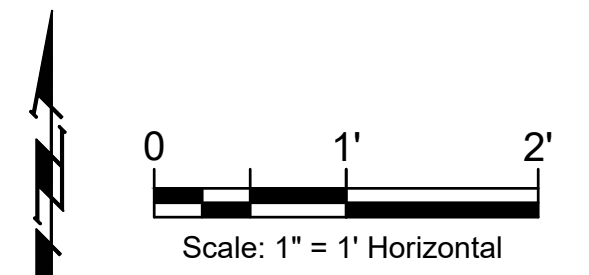
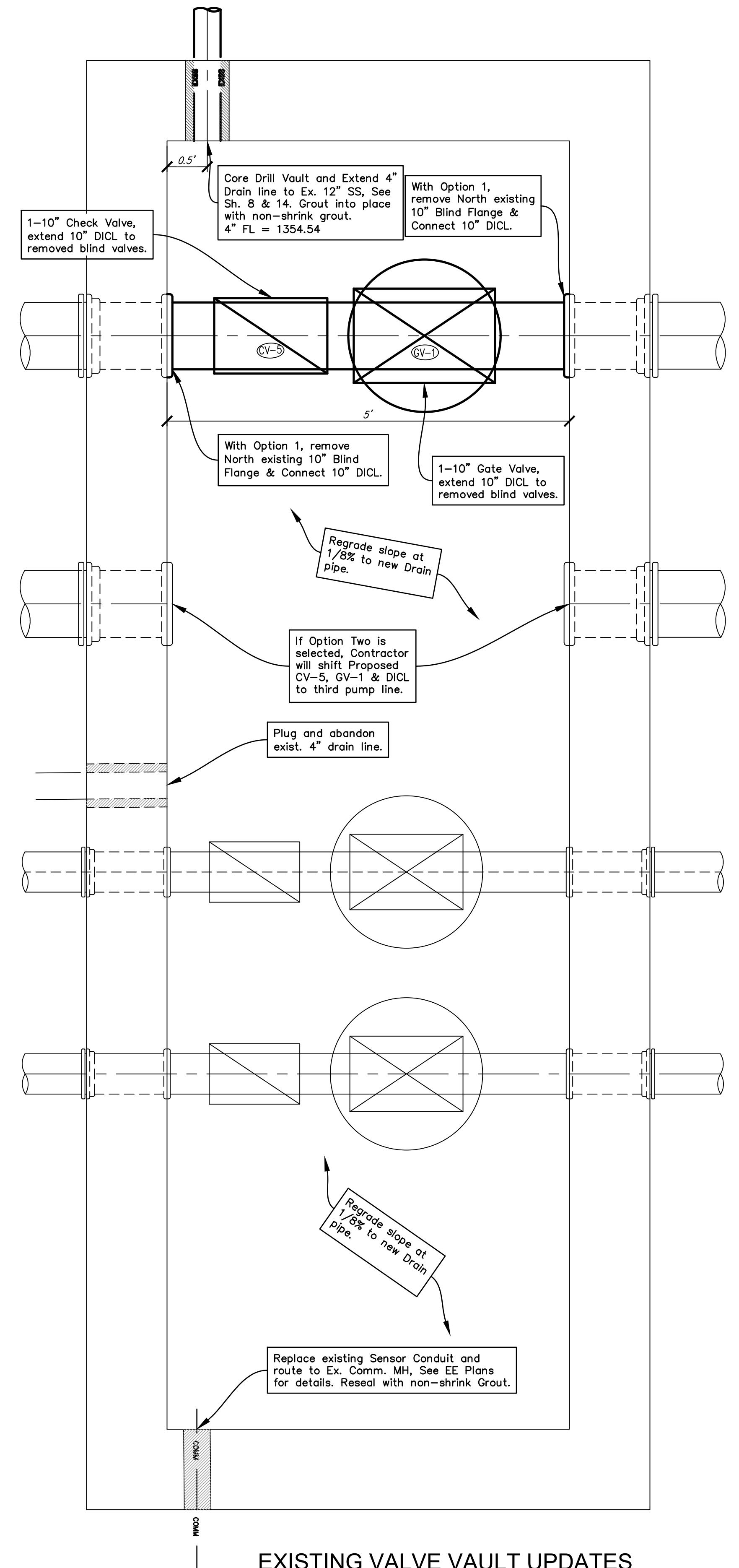


1 7" ASPHALT PAVEMENT
NOT TO SCALE



2 8" CONCRETE PAVEMENT
NOT TO SCALE



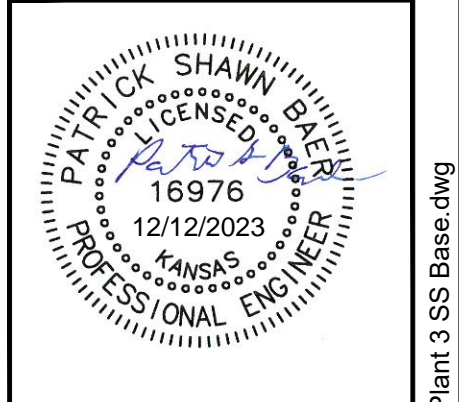
BENCHMARKS

BM #1:
Mag Nail on North edge of road,
78' West of North Entrance Gate
into Plant 3 Facility.
Elev. = 1361.84 NGVD88

BM #2:
RR Spike in East Transmission
power pole, 100' West and 4' North
of the NE corner of Sewer
Treatment Plant #3 Add.
Elev. = 1357.64 NGVD88

BM #3:
RR Spike in West Transmission
power pole, 52' North of 37th St.
N. E. & SE corner of Sewer
Treatment Plant #3 Add.
Elev. = 1360.00 NGVD88

EXISTING VALVE VAULT UPDATES
PLAN VIEW
Scale: 1" = 1'



BAUGHMAN COMPANY

315 Ellis St.
Wichita, KS 67211
316-262-7271
BaughmanCo.com

PLANT #3 (NW)
NEW WET WELL

Existing Valve Vault Update

SANITARY SEWER IMPROVEMENTS

PROJECT NUMBER:
468-2023-005511

DESIGN: PSB DRAWN: LN

DATE: Dec. 13, 2023

SHEET OF
16 29