

BENCHMARKS:

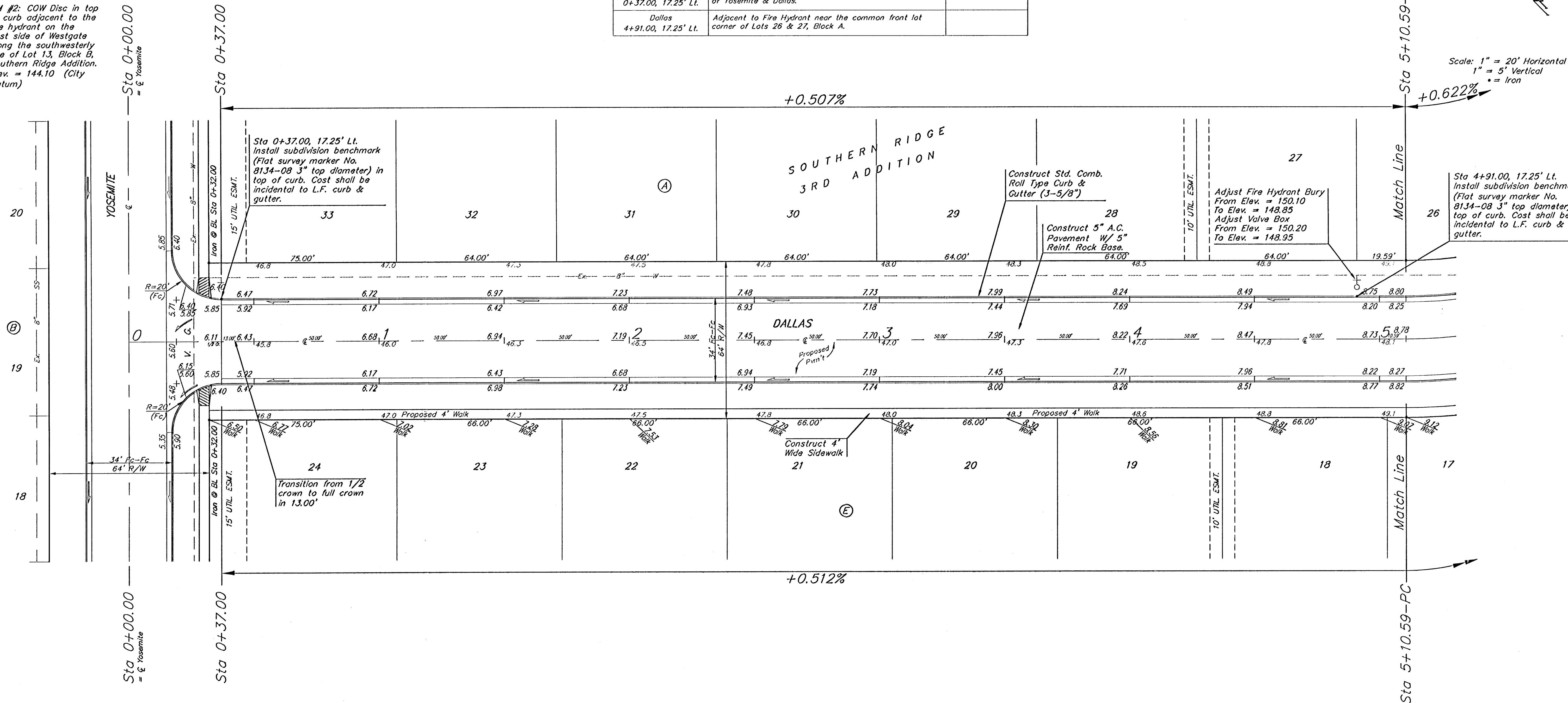
BM #1: COW Disc in top of curb adjacent to the fire hydrant at the SW corner of Yosemite and Lamp Cir.
Elev. = 146.73 (City Datum)

BM #2: COW Disc in top of curb adjacent to the fire hydrant on the west side of Westgate along the southwesterly line of Lot 13, Block B, Southern Ridge Addition.
Elev. = 144.10 (City Datum)

Subdivision Bench Marks		
Street & Station	Location Description	Elevation
Dallas 0+37.00, 17.25' Lt.	Adjacent to Fire Hydrant at S. End of E. Curb Return of Yosemite & Dallas.	
Dallas 4+91.00, 17.25' Lt.	Adjacent to Fire Hydrant near the common front lot corner of Lots 26 & 27, Block A.	

P.V.I.
Elev. = 148.80
No V.C.

Scale: 1" = 20' Horizontal
1" = 5' Vertical
• = Iron



NOTE: ROLL TYPE CURB & GUTTER TO BE CONSTRUCTED ON THE PAVEMENT SHOWN ON THIS SHEET. TOP OF CURB ELEVATIONS ARE GIVEN FOR FULL HEIGHT CURB.

	SOUTHERN RIDGE 3RD ADDITION - PH I	
	DALLAS STA 0+00 TO STA 5+10.59	
Baughman Company, P.A. 315 11th St. W. Dallas, TX 75201 P 972.262.7271 F 972.262.0149 ENGINEERING SURVEYING PLANNING LANDSCAPE ARCHITECTURE		
PROJECT NUMBER 472-84188	DESIGN TJW	DRAWN TJW/TMS
REVISIONS	APPROVED AEG	DATE 09/05
SCALE Noted		SHEET 6 OF 17
Southern Ridge 3rd/STR/Str1.dwg		0501-E151