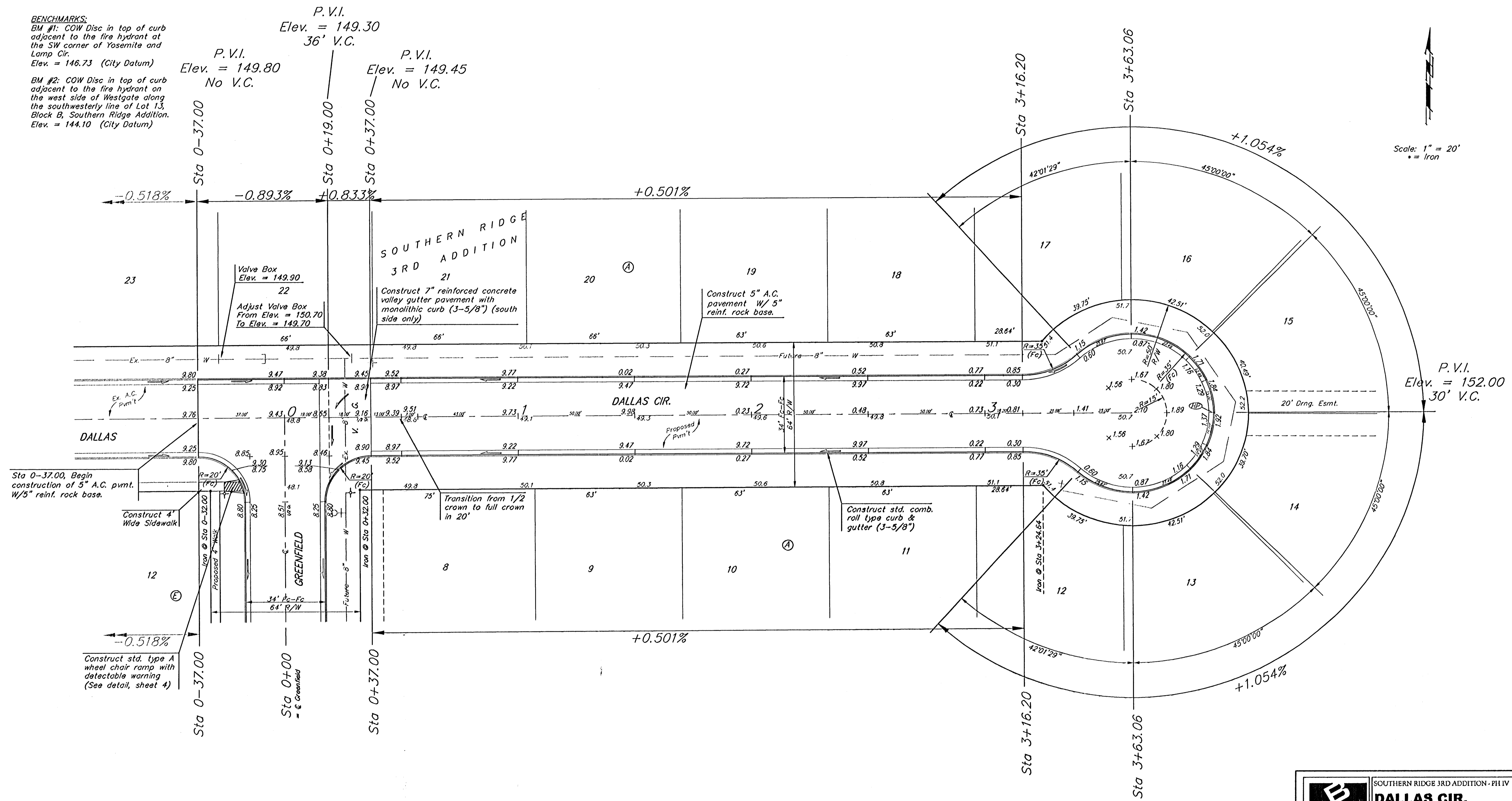


**BENCHMARKS:**  
 BM #1: COW Disc in top of curb adjacent to the fire hydrant at the SW corner of Yosemite and Lamp Cir. Elev. = 146.73 (City Datum)  
 BM #2: COW Disc in top of curb adjacent to the fire hydrant on the west side of Westgate along the southwesterly line of Lot 13, Block B, Southern Ridge Addition. Elev. = 144.10 (City Datum)

P.V.I. Elev. = 149.30  
 36' V.C.  
 P.V.I. Elev. = 149.80  
 No V.C.  
 P.V.I. Elev. = 149.45  
 No V.C.

Scale: 1" = 20'  
 • = Iron



Subdivision Bench Marks

Street & Station	Location Description	Elevation
Greenfield 0+42.00, 17.25' Lt.	Adjacent to Fire Hydrant at S. End of E. Curb Return of Dallas & Greenfield.	
Greenfield 7+98.49, 35.75' Lt.	Adjacent to Fire Hydrant at W. End of N. Curb Return of Greenfield & Moize Rd.	

**NOTE:** ROLL TYPE CURB & GUTTER TO BE CONSTRUCTED ON THE PAVEMENT SHOWN ON THIS SHEET. TOP OF CURB ELEVATIONS ARE GIVEN FOR FULL HEIGHT CURB.

SOUTHERN RIDGE 3RD ADDITION - PH IV  
**DALLAS CIR.**  
 STA 0+37.00 TO STA 3+63.06

**Baughman**  
 Baughman Company, P.A. 315 Ellis St. Walnut, KS 67111 P 3162637271 F 3162621419  
 ENGINEERING | SURVEYING | PLANNING | LANDSCAPE ARCHITECTURE

PROJECT NUMBER 472-84267	DESIGN AEO	DRAWN TMS
REVISIONS:	APPROVED AEO	DATE 10/12/05
	SCALE Noted	SHEET 6 OF 19

Southern Ridge 3rd/Phase 4/Str1 0508-B314