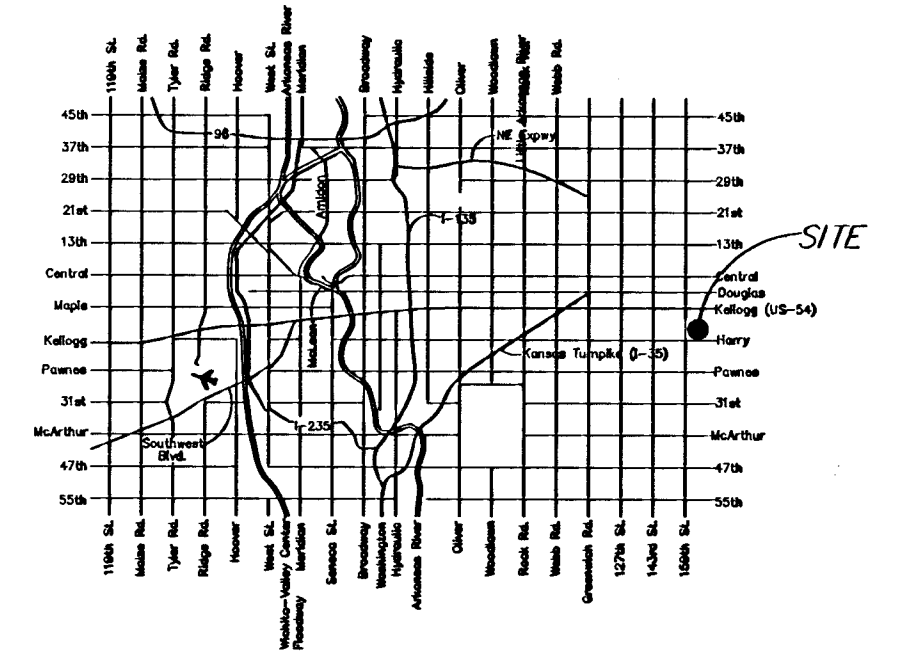


- Index of Sheets:  
 1 Cover Sheet  
 2 Paving Plan  
 3-7 Details  
 8 Cross Sections  
 9 Plat

# Timber Lake Estates 4th Addition STREET IMPROVEMENTS

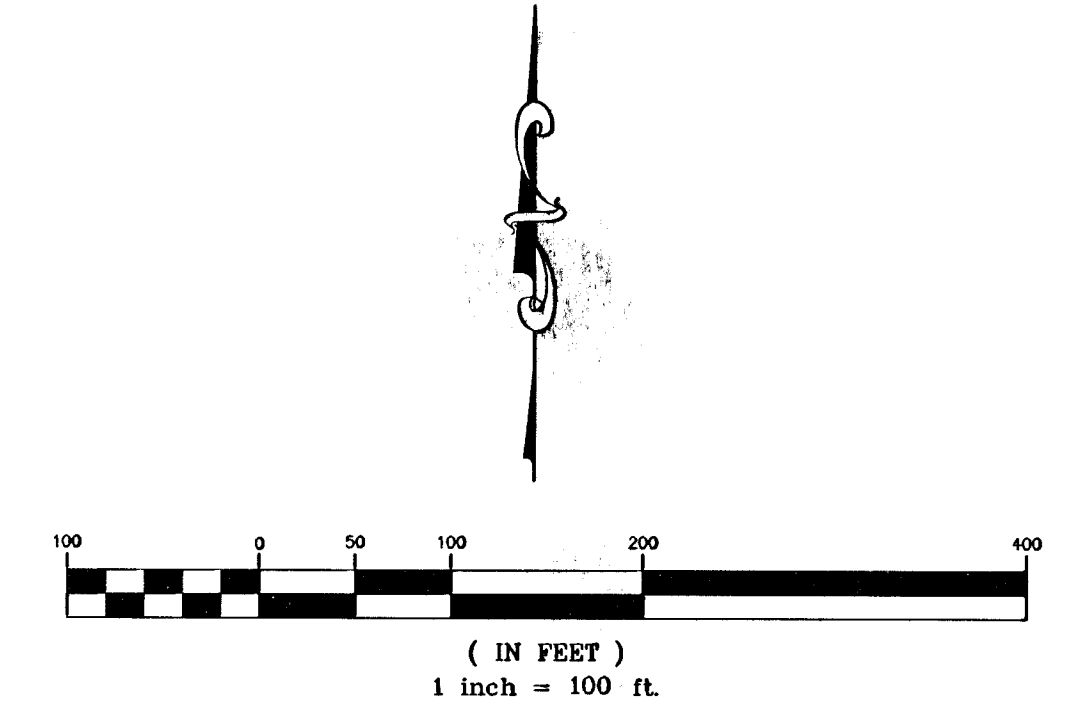
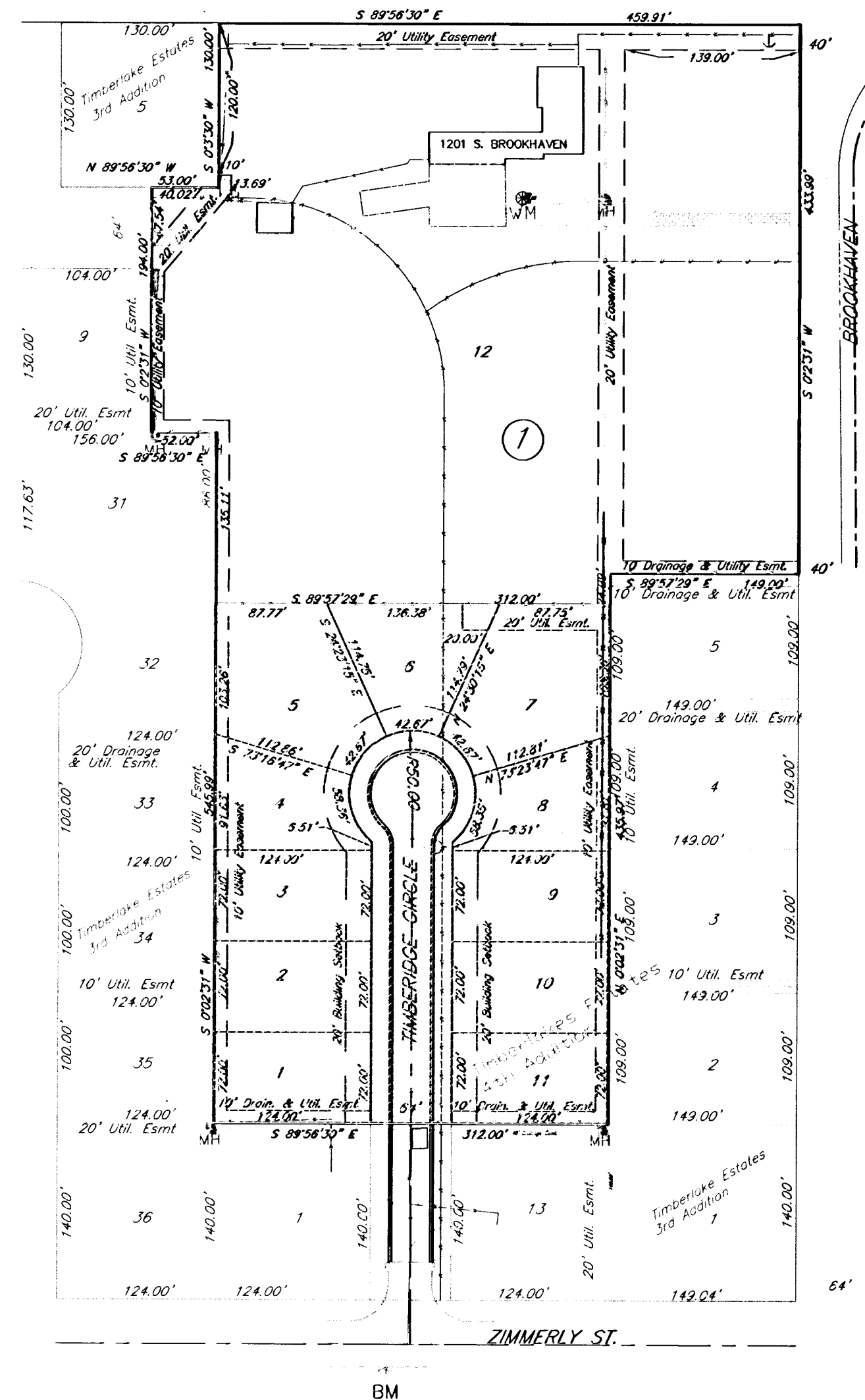
Project Number 472 84253  
 OCA NO.: 765953  
 CITY OF WICHITA, KANSAS  
 Jim Armour, P.E., City Engineer



City of Wichita

GENERAL NOTES:

- Contractor will be required to provide notice to utility companies a minimum of twenty-four (24) hours prior to any excavation, as follows:  
 Kansas One-Call 687-2470  
 The Contractor must notify the following in case of an emergency:  
 Cox Communications 262-4270  
 or 263-2061  
 Westar Energy/  
 Kansas Gas & Electric Company 1-888-482-4950  
 Southwestern Bell Telephone Company 1-571-2611  
 City of Wichita Water Department 268-4908  
 City of Wichita Sewer Department 268-4071  
 Aquila Natural Gas 942-8811  
 or 1-800-303-0357
- Exist. utilities and their locations, as shown on the plans, represent the best information obtainable for design. Location information has been obtained from the various utility companies and is either from company record drawings or company-provided field locations. The Contractor will be required to work around existing utilities which do not conflict with proposed construction.
- The Contractor to verify utility locations prior to construction of this project.
- Utility service and installation shall be coordinated with the respective utility owners. Contacts are:  
 Kansas Gas Service Charlene Pint 832-3121  
 Westar Energy Miles Capps 261-6251  
 Aquila Networks Calvin Briggs 942-8811  
 Wichita Water Paul Bryant 268-4555  
 Southwestern Bell Jim Toben 268-2759  
 Cox Communications Brian Ring 262-4270
- All lawn/turf areas disturbed by construction of proposed improvements shall be restored with seed. All seeding work shall be in accordance with the City of Wichita standard specifications and the City of Wichita administrative regulation No. AR78 which governs cleanup and replacement following construction. All costs for this work shall be subsidiary to the lump sum price bid for "Site Restoration."
- Traffic affected by the construction of this project shall be handled in accordance with the latest edition of the Manual on Uniform Traffic Control Devices.
- All commercial signs to be moved by others prior to construction.
- Properties within the project may have underground irrigation systems (lawn sprinklers) which conflict with new construction. Contractor shall remove such components as needed during construction of the project. The irrigation system shall be reinstalled in like kind before project completion. Any irrigation system modifications required because of project improvements shall be coordinated with the property owner. Portions of underground irrigation systems not in conflict with new construction shall be protected from damage and shall remain in place. All work related to underground irrigations/sprinklers shall be subsidiary to Site Restoration.



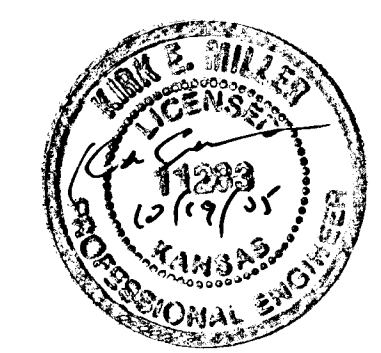
BENCHMARKS:  
 "□" Cut on Inlet  
 South of Zimmerly  
 at Timberlake Circle  
 Elev. = 108.98

PROJECT LENGTH

STREET	LENGTH
TIMBERLAKE CIR.	471.35
TOTAL	471.35

DIRTWORK

Streets	
Borrow Excavation	0 CY
Excavation	650 CY
Compacted Fill (90% Density)	0 CY
Compacted Fill (95% Density)	0 CY
Loose Fill	0 CY



June 2005

Benefit District

**kemiller**  
 engineering

516 S. Market,  
 Wichita, KS 67202 316/264-0242