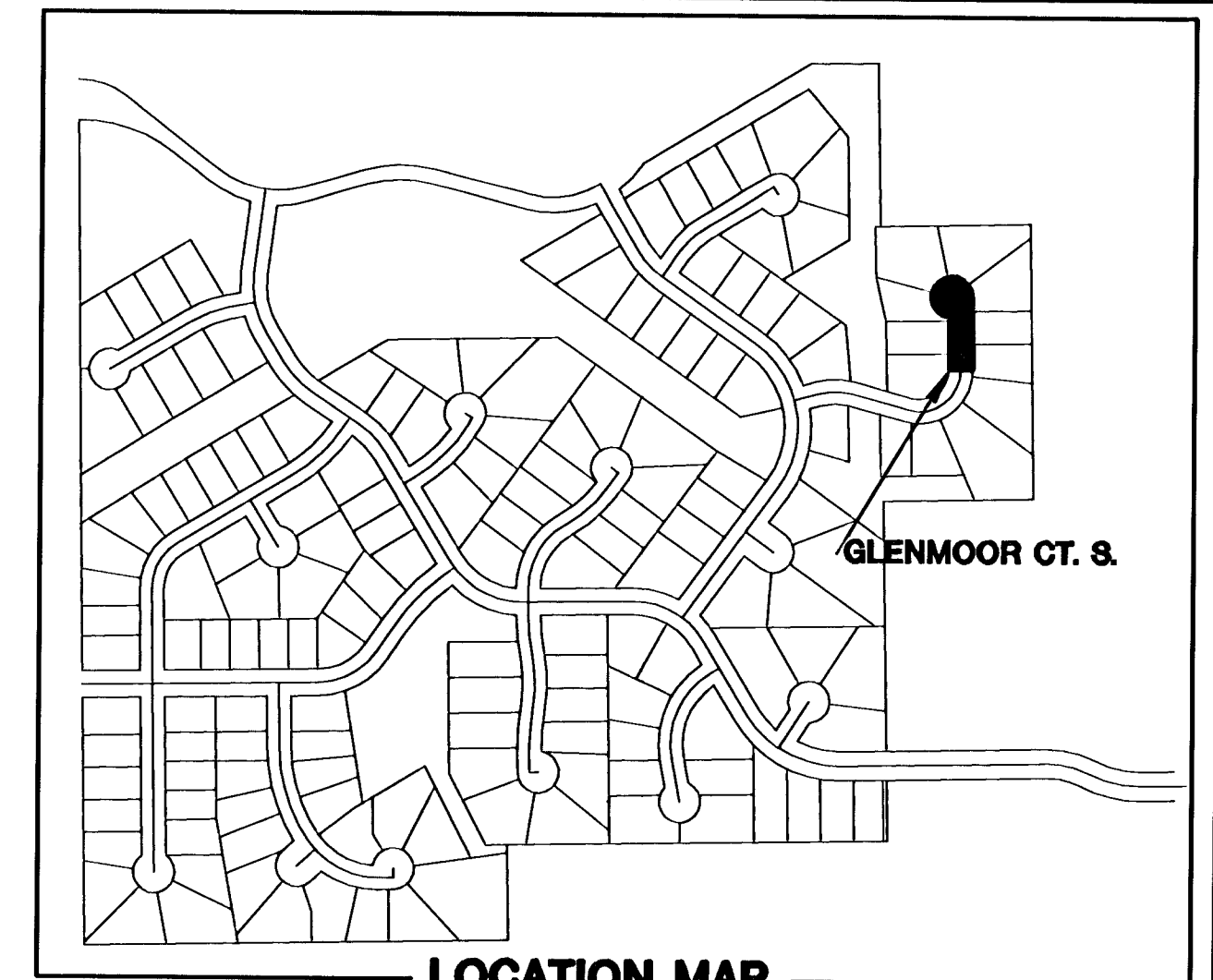
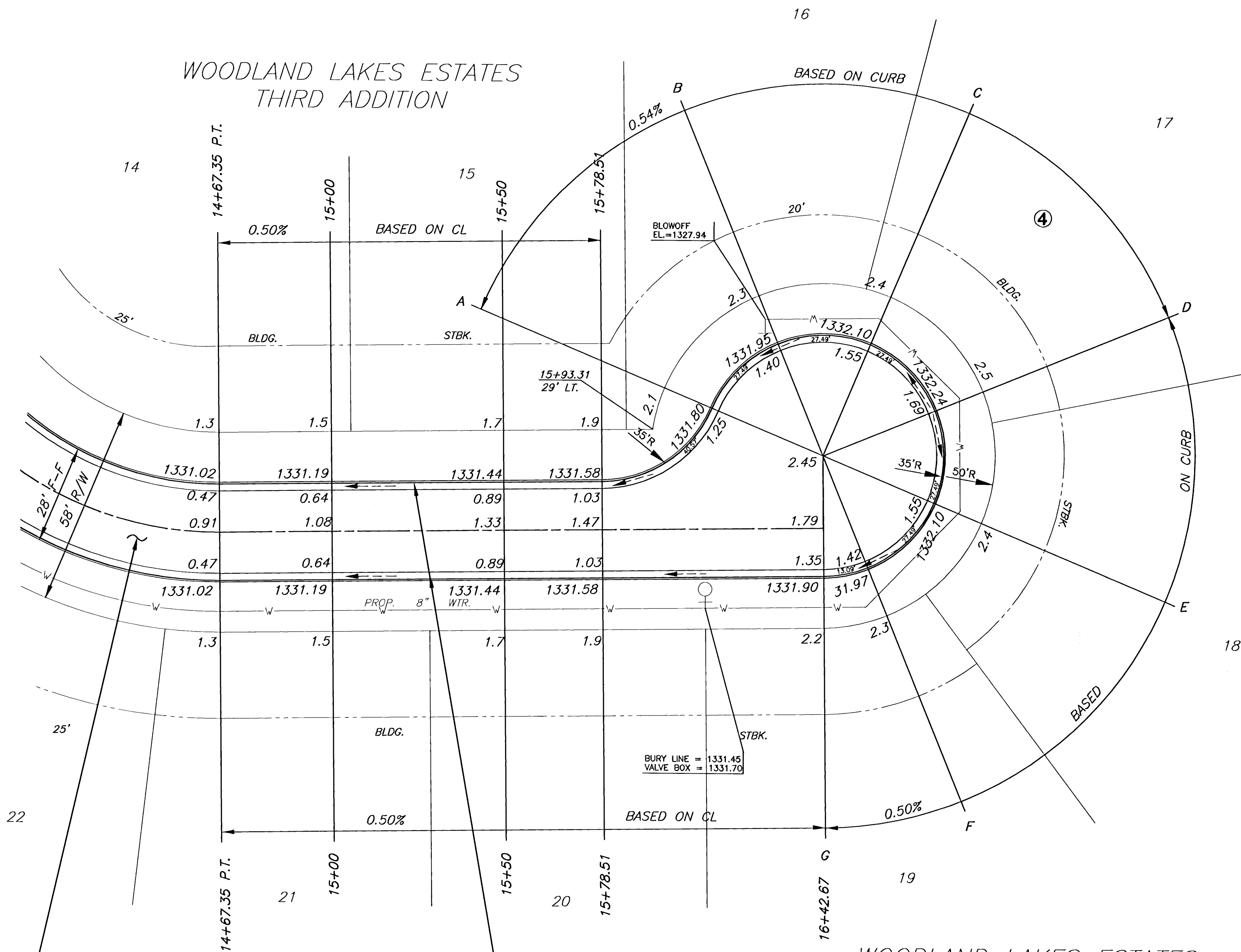


WOODLAND LAKES ESTATES
THIRD ADDITION



CONST. 5" A.C. PAVEMENT
W/ 3" BIT. BASE OVER 6"
CRUSHED ROCK BASE ON
GEOGRID REINFORCEMENT.

CONSTRUCT COMBINED
CURB & GUTTER
(ROLL CURB, 3 5/8")

WOODLAND LAKES ESTATES
THIRD ADDITION

- NOTE:**
1. TOP OF CURB ELEVATIONS SHOWN ARE FOR FULL CURB. CONSTRUCT CURB AS NOTED.
 2. CONTRACTOR SHALL REMOVE ALL TREES WITHIN ROAD RIGHT-OF-WAY.
 3. CURVE DATA FOR CURVES LABELED (C#) MAY BE FOUND ON SHEET 15.

LEGEND
+ STREET SIGN & SIGN LOCATION
(SEE SIGN ASSEMBLY TABLE
FOR TYPE & STATION OF SIGN)

 MKEC ENGINEERING CONSULTANTS 411 N. WEBB ROAD WICHITA, KS. 67206 316 - 684 - 9600	WOODLAND LAKES THIRD ADDTION	
	PROJECT NAME	
	GLENMOOR COURT SO. - GLENMOOR PHASE	
	SHEET TITLE	
DESIGN BY: <u>SRS</u>	DRAWN BY: <u>DM</u>	CHECKED BY: <u>SRS</u>
DATE: <u>MAY 2005</u>	JOB NO.: <u>02172E4</u>	SHEET/OF: <u>14 / 29</u>